

5264C9

# Harris Central Appraisal District



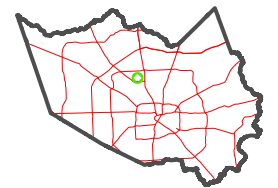
0 45 90 180 Feet

PUBLICATION DATE:  
3/13/2023

Geospatial or map data maintained by the Harris Central Appraisal District is for informational purposes and may not have been prepared for or be suitable for legal, engineering, or surveying purposes. It does not represent an on-the-ground survey and only represents the approximate location of property boundaries.



## MAP LOCATION

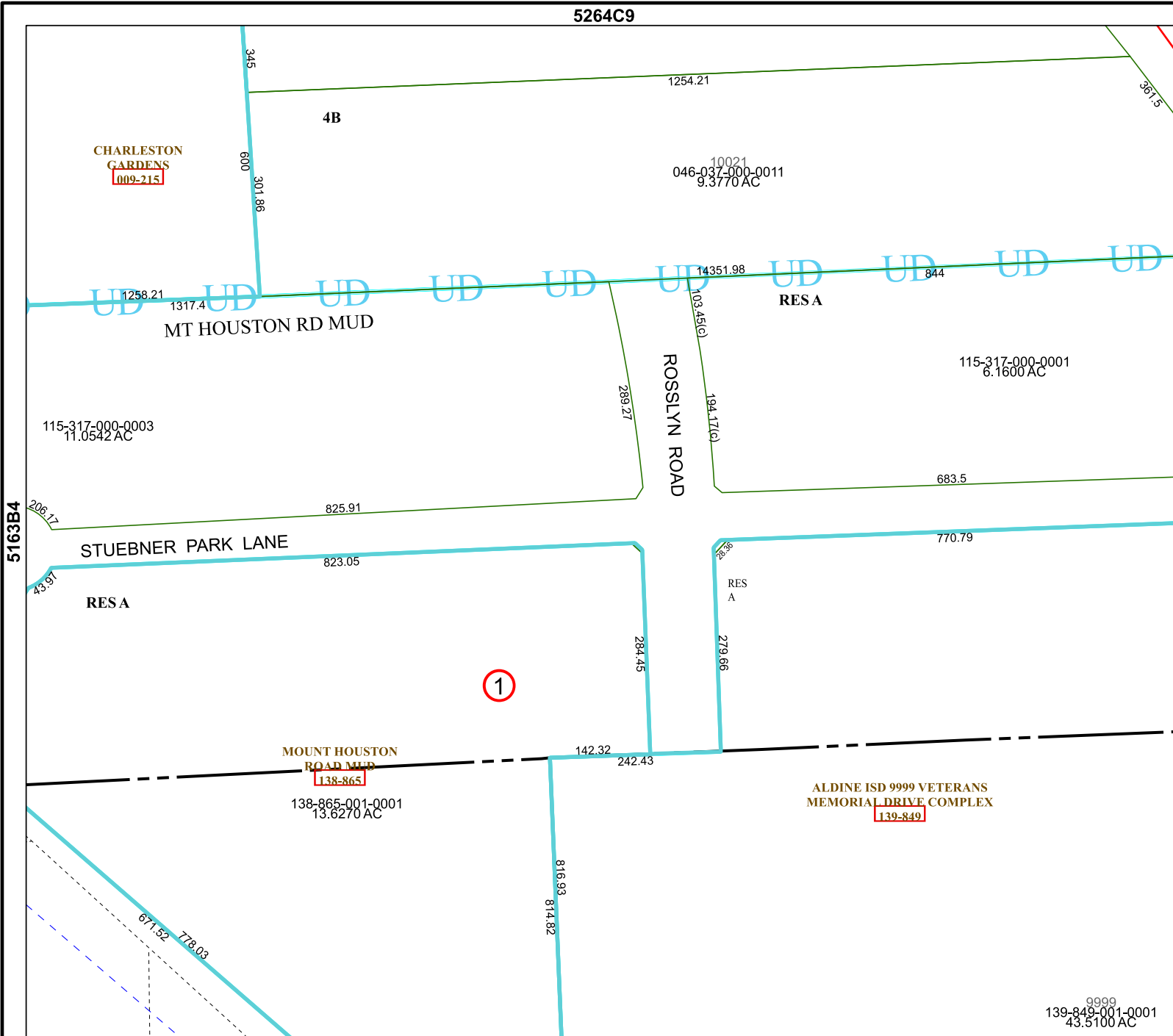


# FACET 5263A1

11	12	9	10	11
3	4	1	2	3
7	8	5	6	7

9999  
139-849-001-0001  
43.5100 AC

5263A5



5163B4

5263A2