

# Harris Central Appraisal District

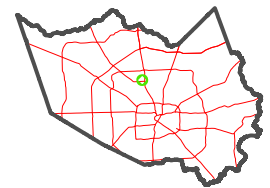


0 45 90 180 Feet

PUBLICATION DATE: 12/30/2023

Geospatial or map data maintained by the Harris Central Appraisal District is for informational purposes and may not have been prepared for or be suitable for legal, engineering, or surveying purposes. It does not represent an on-the-ground survey and only represents the approximate location of property boundaries.

MAP LOCATION

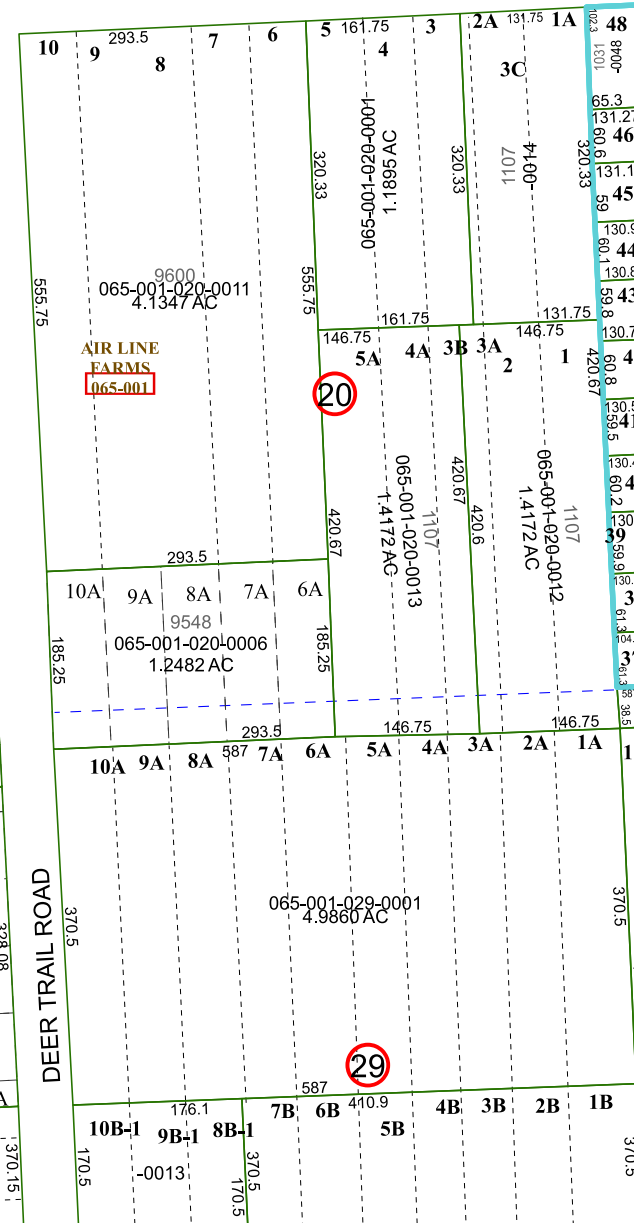


## FACET 5263B9

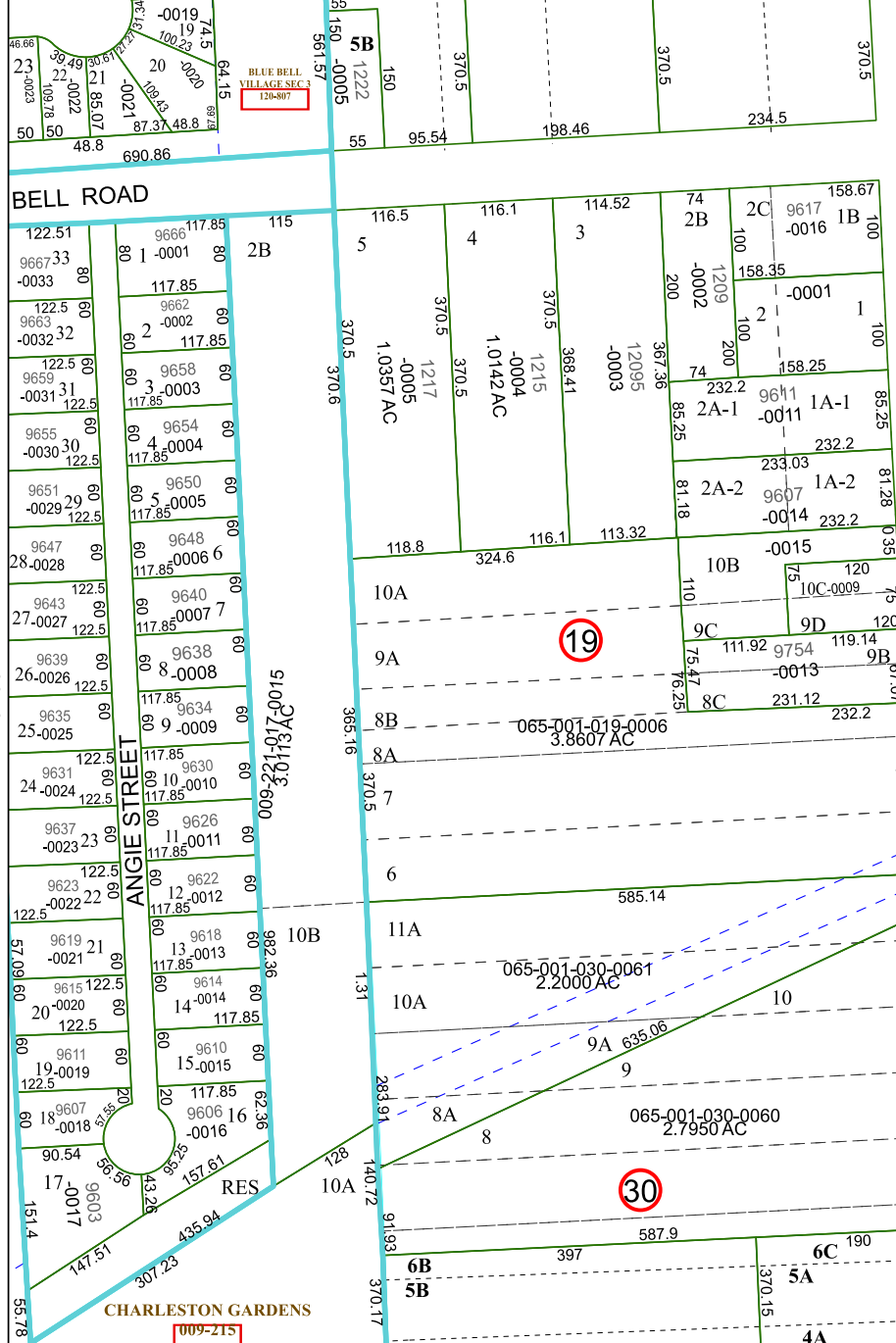
7	8	5	6	7
11	12	9	10	11
3	4	1	2	3

5263B5

123.5	58.7	123.5	370.5	370.5	370.5	370.5	741	205.45
58.7	1122	58.7	100	134.8	294.8	370.5		
58.7	123.5	58.7						



5263D1



5263D2

009-215