

5263C3

Harris Central Appraisal District

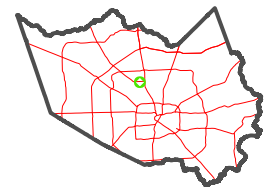


0 45 90 180 Feet

PUBLICATION DATE: 4/3/2023

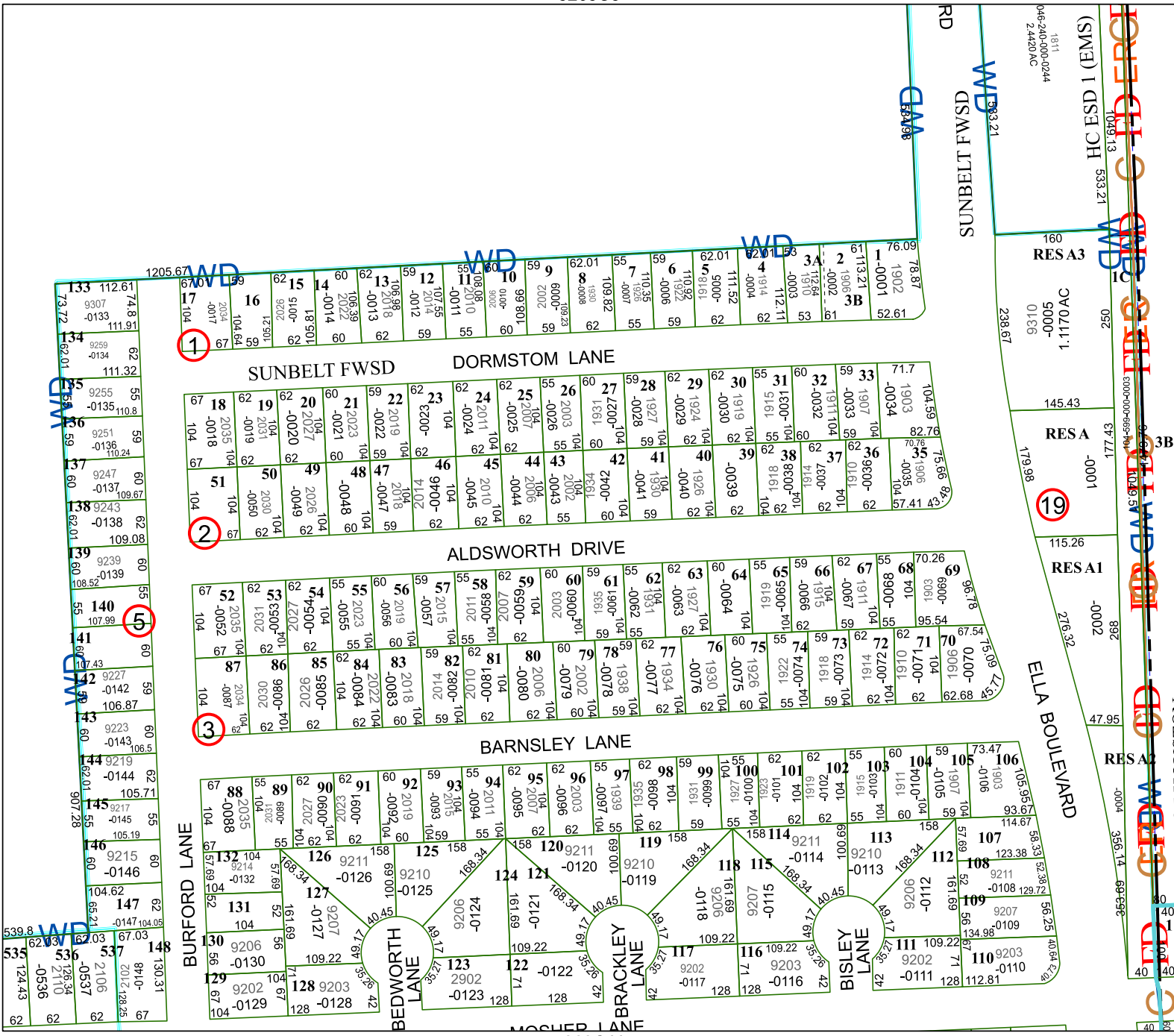
Geospatial or map data maintained by the Harris Central Appraisal District is for informational purposes and may not be suitable for legal, engineering, or surveying purposes. It does not represent an on-the-ground survey and only represents the approximate location of property boundaries.

MAP LOCATION



FACET 5263C7

1	2	3	4	1
5	6	7	8	5
9	10	11	12	9



5263C11

932925

932925

046-240-000-0244
2.4420 AC

160
RESA3
5000-
0136

145.43
RESA
-0001

115.26
RESA1
-0002

ELLA BOULEVARD
47.95
RESA2
-0004

046-240-000-0244
2.4420 AC

046-240-000-0244
2.4420 AC