

5264A12

# Harris Central Appraisal District



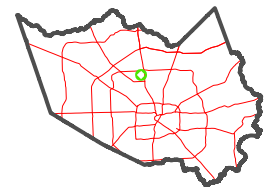
0 45 90 180  
Feet

PUBLICATION DATE:  
4/8/2024

Geospatial or map data maintained by the Harris Central Appraisal District is for informational purposes and may not have been prepared for or be suitable for legal, engineering, or surveying purposes. It does not represent an on-the-ground survey and only represents the approximate location of property boundaries.

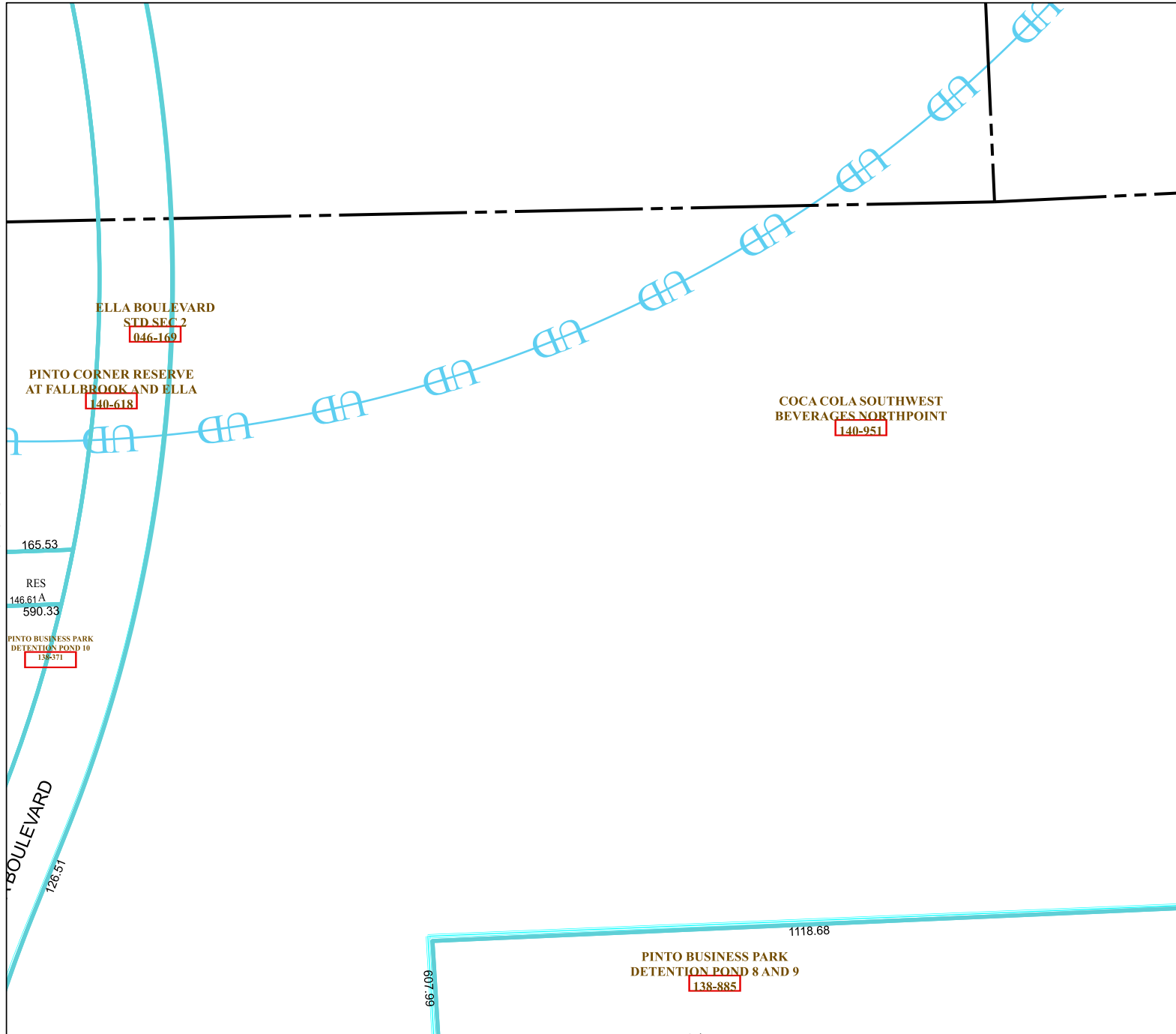


## MAP LOCATION



# FACET 5264C4

10	11	12	9	10
2	3	4	1	2
6	7	8	5	6



5264C3

5264D1

5264C8