

Harris Central Appraisal District



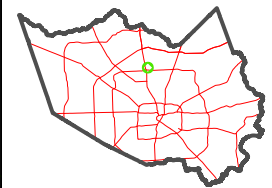
0 45 90 180 Feet

PUBLICATION DATE:
5/6/2024

Geospatial or map data maintained by the Harris Central Appraisal District is for informational purposes and may not have been prepared for or be suitable for legal, engineering, or surveying purposes. It does not represent an on-the-ground survey and only represents the approximate location of property boundaries.



MAP LOCATION

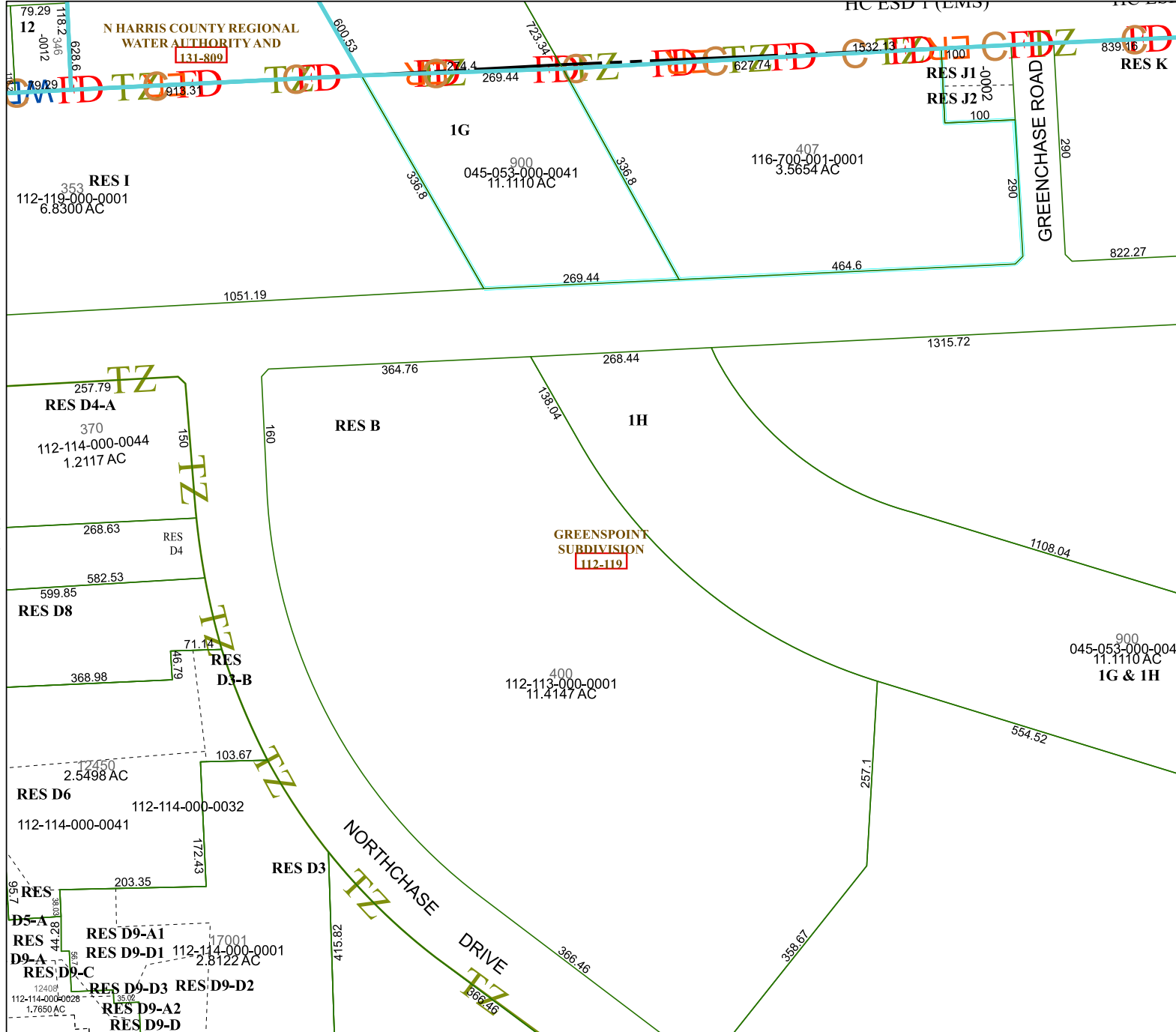


FACET

5265B12

6	7	8	5	6
10	11	12	9	10
2	3	4	1	2

5265B8



5265D4

5265B11

5365A9

N HARRIS COUNTY REGIONAL WATER AUTHORITY AND
131-809

GREENSPOINT SUBDIVISION
112-119

GREENCHASE ROAD

NORTHCHASE DRIVE

RES I
112-119-000-0001
6.8300 AC

IG
045-053-000-0041
11.110 AC

116-700-001-0001
3.5654 AC

RES J1
RES J2

RES K

RES D4-A
370
112-114-000-0044
1.2117 AC

RES D4

RES D8

RES D3-B

RES D6

RES D3

RES D5-A
RES D9-A
RES D9-C

RES D9-A1
RES D9-D1
112-114-000-0001
2.8122 AC

RES D9-D3
RES D9-D2
RES D9-A2
RES D9-D

112-113-000-0001
11.4147 AC

045-053-000-0041
11.110 AC
IG & IH