

# Harris Central Appraisal District

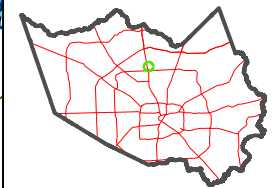


0 45 90 180 Feet

PUBLICATION DATE: 1/6/2023

Geospatial or map data maintained by the Harris Central Appraisal District is for informational purposes and may not have been prepared for or be suitable for legal, engineering, or surveying purposes. It does not represent an on-the-ground survey and only represents the approximate location of property boundaries.

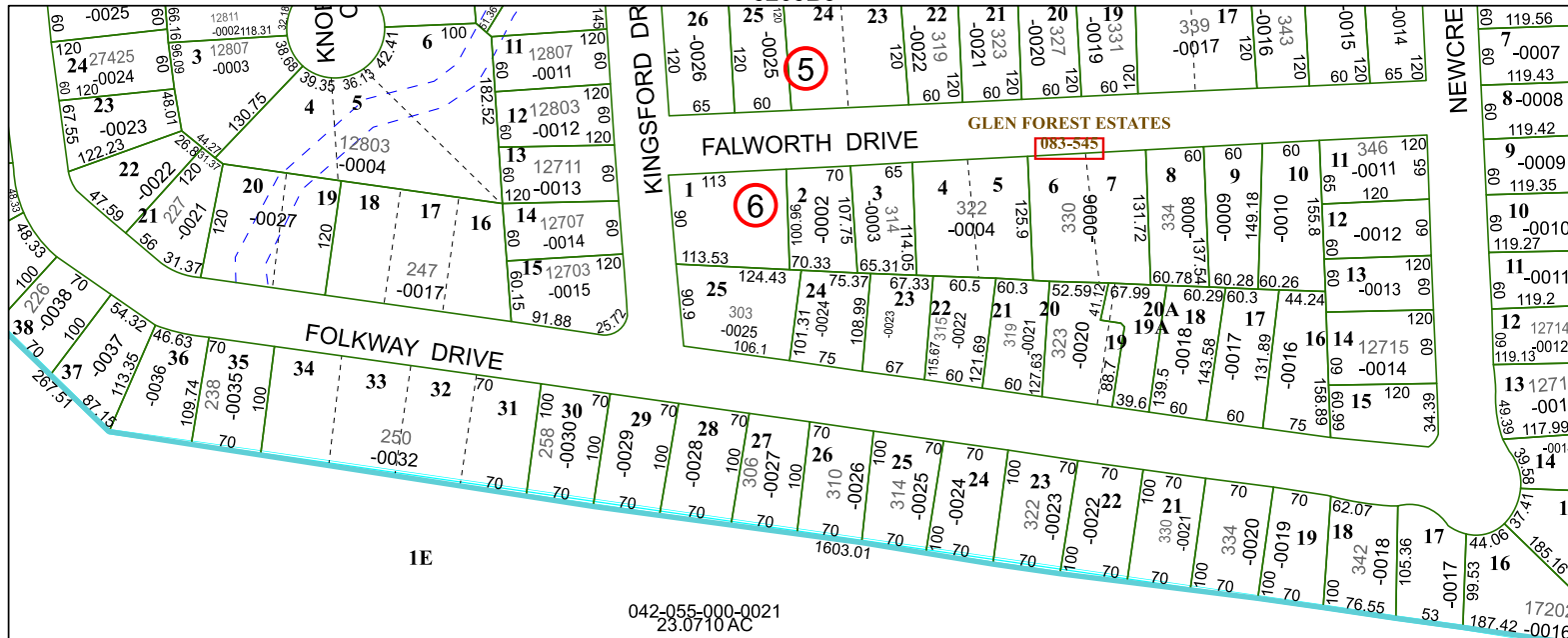
MAP LOCATION



## FACET 5265B7

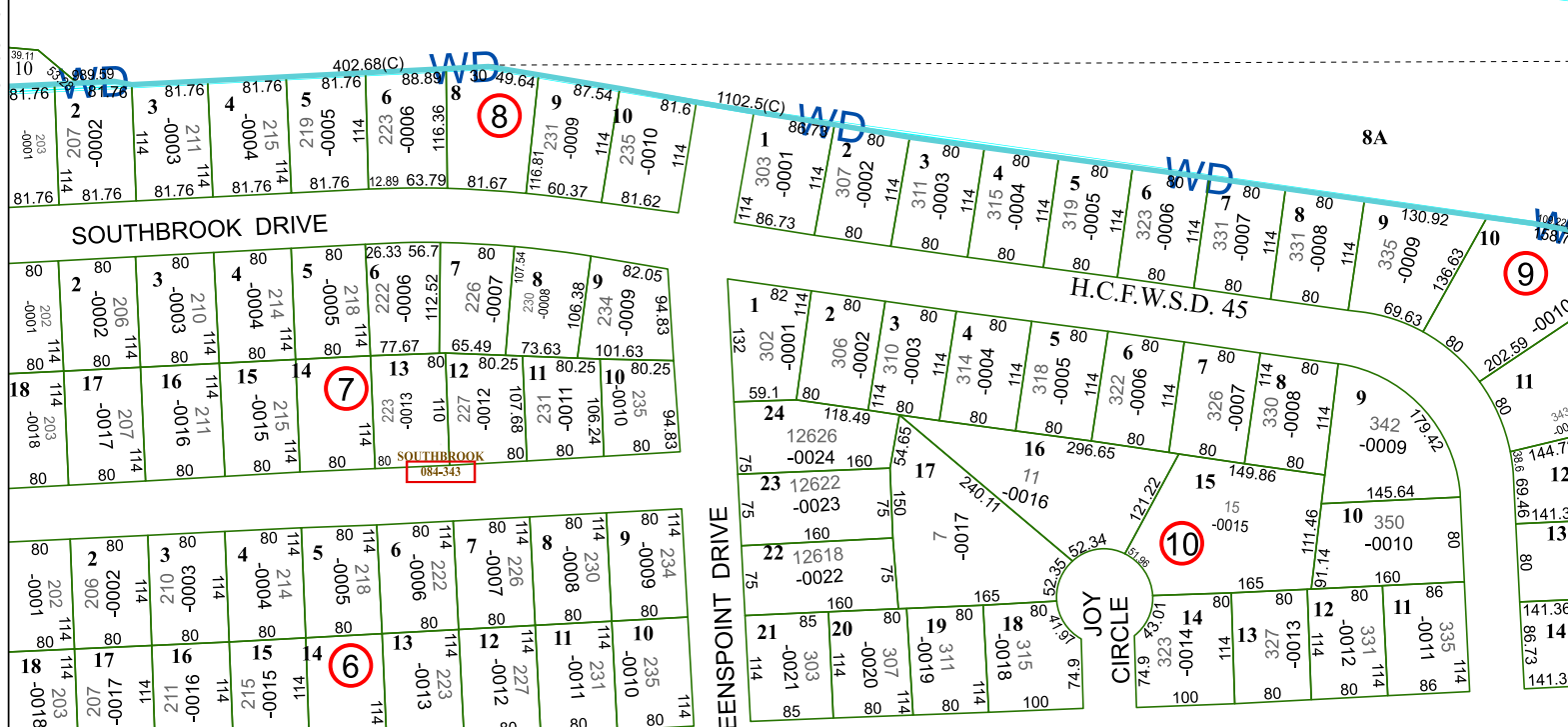
1	2	3	4	1
5	6	7	8	5
9	10	11	12	9

5265B3



042-055-000-0021  
23.0710AC

5265B11



5265B6

5265B8