

Harris Central Appraisal District

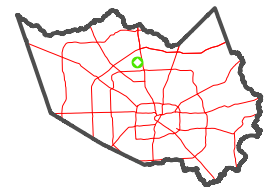


0 45 90 180 Feet

PUBLICATION DATE:
3/25/2024

Geospatial or map data maintained by the Harris Central Appraisal District is for informational purposes and may not have been prepared for or be suitable for legal, engineering, or surveying purposes. It does not represent an on-the-ground survey and only represents the approximate location of property boundaries.

MAP LOCATION

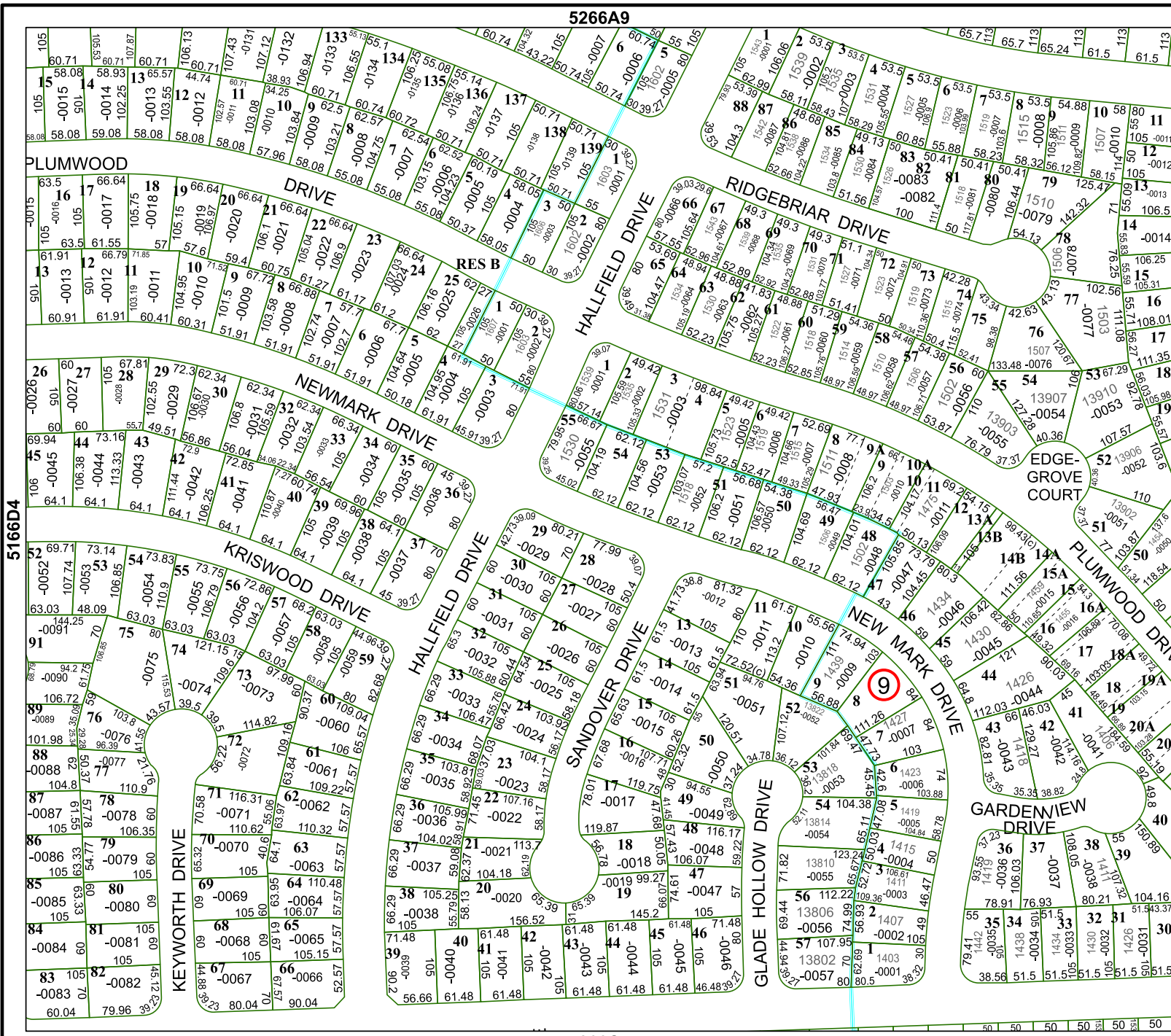


FACET 5266C1

11	12	9	10	11
3	4	1	2	3
7	8	5	6	7

5266A9

5266C5



5166D4

5266C2

