

Harris Central Appraisal District



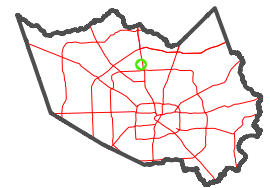
0 45 90 180 Feet

PUBLICATION DATE:
12/30/2023

Geospatial or map data maintained by the Harris Central Appraisal District is for informational purposes and may not have been prepared for or be suitable for legal, engineering, or surveying purposes. It does not represent an on-the-ground survey and only represents the approximate location of property boundaries.



MAP LOCATION



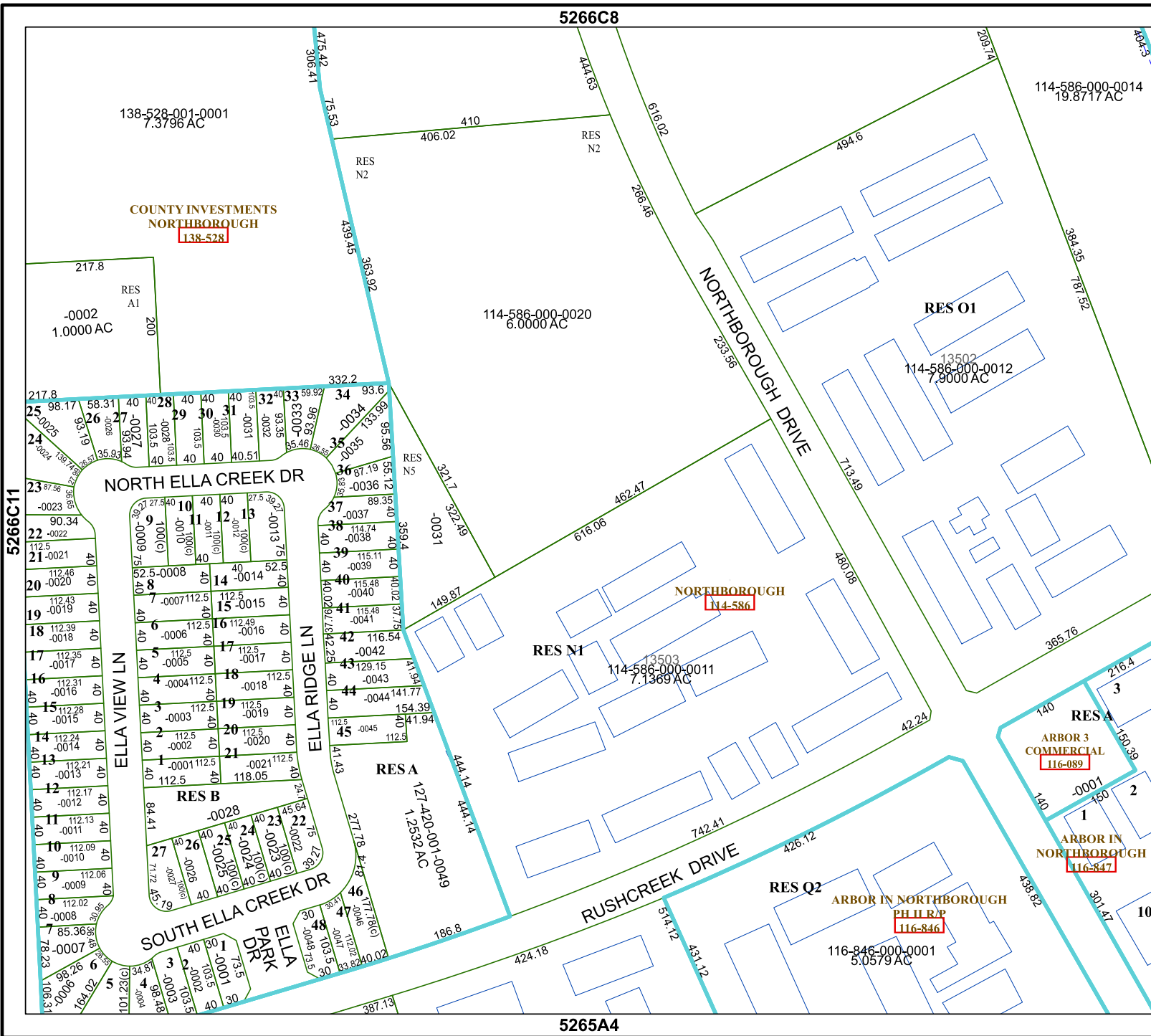
FACET

5266C12

6	7	8	9	6
10	11	12	9	10
2	3	4	1	2

5266C8

5265A4



138-528-001-0001
7.3796 AC

COUNTY INVESTMENTS
NORTHBOROUGH
138-528

217.8
RES A1
-0002
1.0000 AC

114-586-000-0020
6.0000 AC

114-586-000-0014
19.8717 AC

RES O1

13502
114-586-000-0012
7.9000 AC

NORTH ELLA CREEK DR

NORTHBOROUGH
14-586

RES N1

13503
114-586-000-0011
7.1369 AC

RESA

127.420001-0049
1.2532 AC

RESA
ARBOR 3
COMMERCIAL
116-089

ARBOR IN
NORTHBOROUGH
116-847

RES Q2

ARBOR IN NORTHBOROUGH
PHILR/P
116-846

116-846-000-0001
5.0579 AC