

5267B9

Harris Central Appraisal District



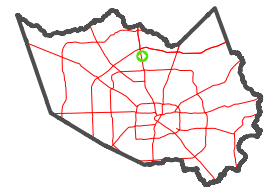
0 45 90 180 Feet

PUBLICATION DATE:
3/13/2023

Geospatial or map data maintained by the Harris Central Appraisal District is for informational purposes and may not have been prepared for or be suitable for legal, engineering, or surveying purposes. It does not represent an on-the-ground survey and only represents the approximate location of property boundaries.



MAP LOCATION



FACET

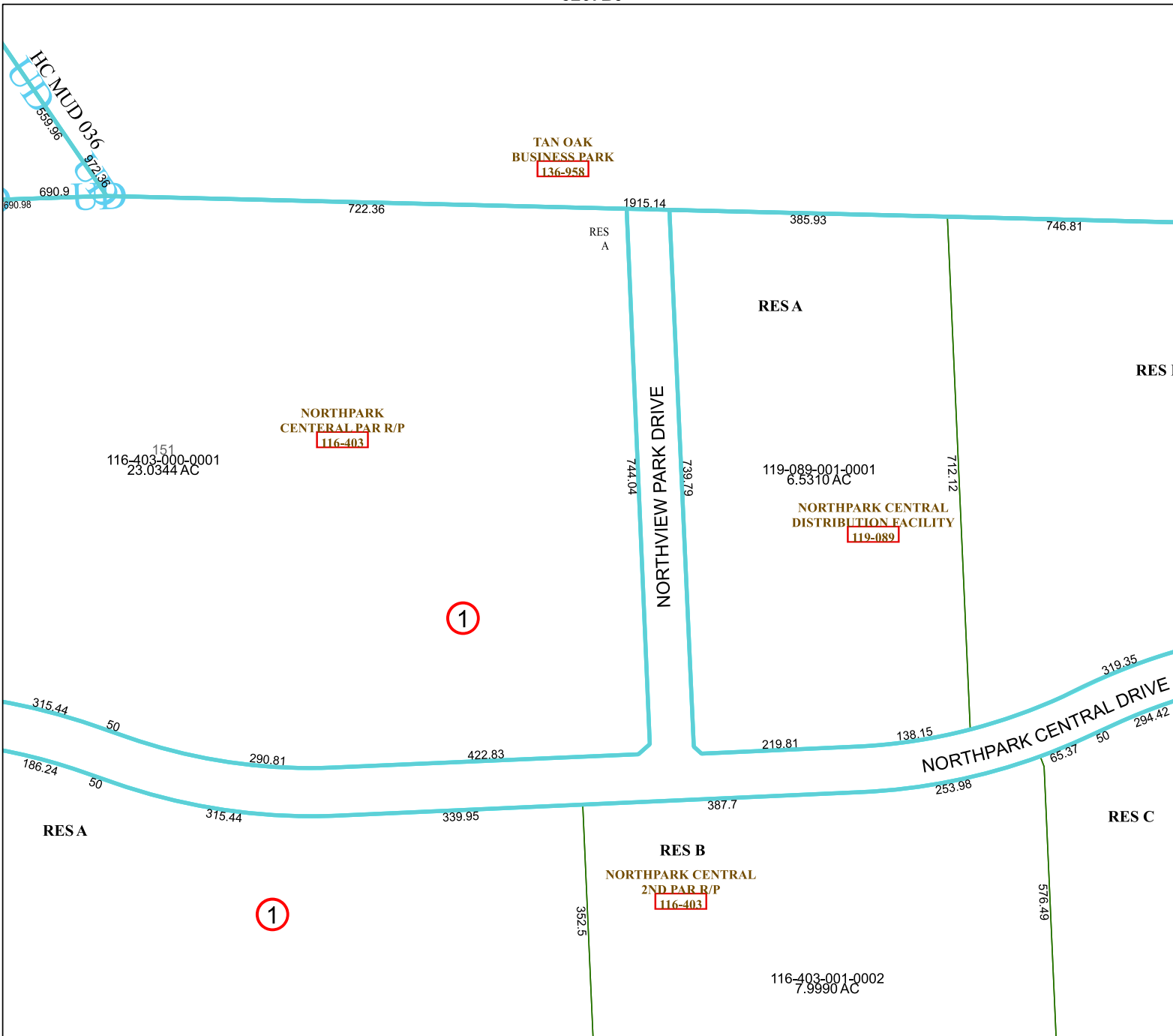
5267D1

11	12	9	10	11
3	4	1	2	3
7	8	5	6	7

5267D5

5267C4

5267D2



TAN OAK
BUSINESS PARK
136-958

NORTH PARK
CENTRAL PAR R/P
116-403

NORTH PARK CENTRAL
DISTRIBUTION FACILITY
119-089

NORTH PARK CENTRAL
2ND PAR R/P
116-403

151
116-403-000-0001
23.0344 AC

116-403-001-0002
7.9390 AC

1

1

HC MUD 036
559.96
672.36

NORTHVIEW PARK DRIVE

NORTH PARK CENTRAL DRIVE

352.5

576.49

RES A

RES A

RES B

RES A

RES B

RES C

690.98 690.9 722.36 1915.14 385.93 746.81

315.44 50 290.81 422.83 219.81 138.15 319.35

186.24 50 315.44 339.95 387.7 253.98 65.37 50 294.42