

Harris Central Appraisal District

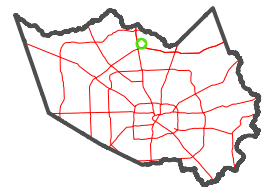


0 45 90 180 Feet

PUBLICATION DATE:
12/30/2023

Geospatial or map data maintained by the Harris Central Appraisal District is for informational purposes and may not have been prepared for or be suitable for legal, engineering, or surveying purposes. It does not represent an on-the-ground survey and only represents the approximate location of property boundaries.

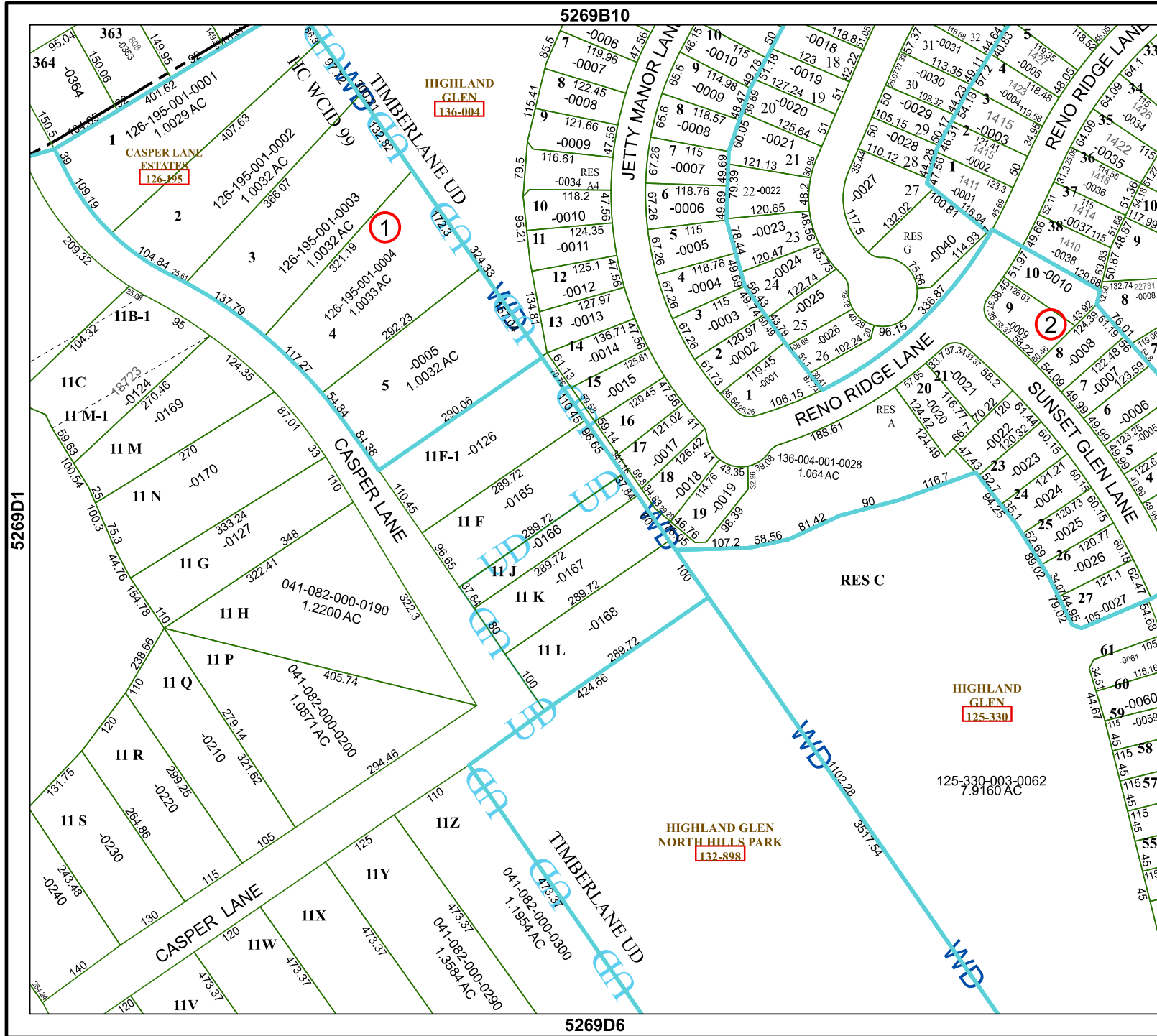
MAP LOCATION



FACET

5269D2

12	9	10	11	12
4	1	2	3	4
8	5	6	7	8



5269B10

5269D6

5269D1

5269D3

HIGHLAND GLEN
136-004

CASPER LANE ESTATES
126-195

HIGHLAND GLEN
125-330

HIGHLAND GLEN
NORTH HILLS PARK
132-898

125-330-003-0062
7.9160 AC

