

# Harris Central Appraisal District

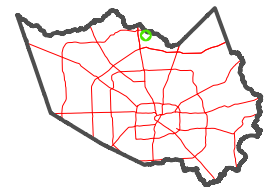


0 45 90 180 Feet

PUBLICATION DATE:  
1/6/2023

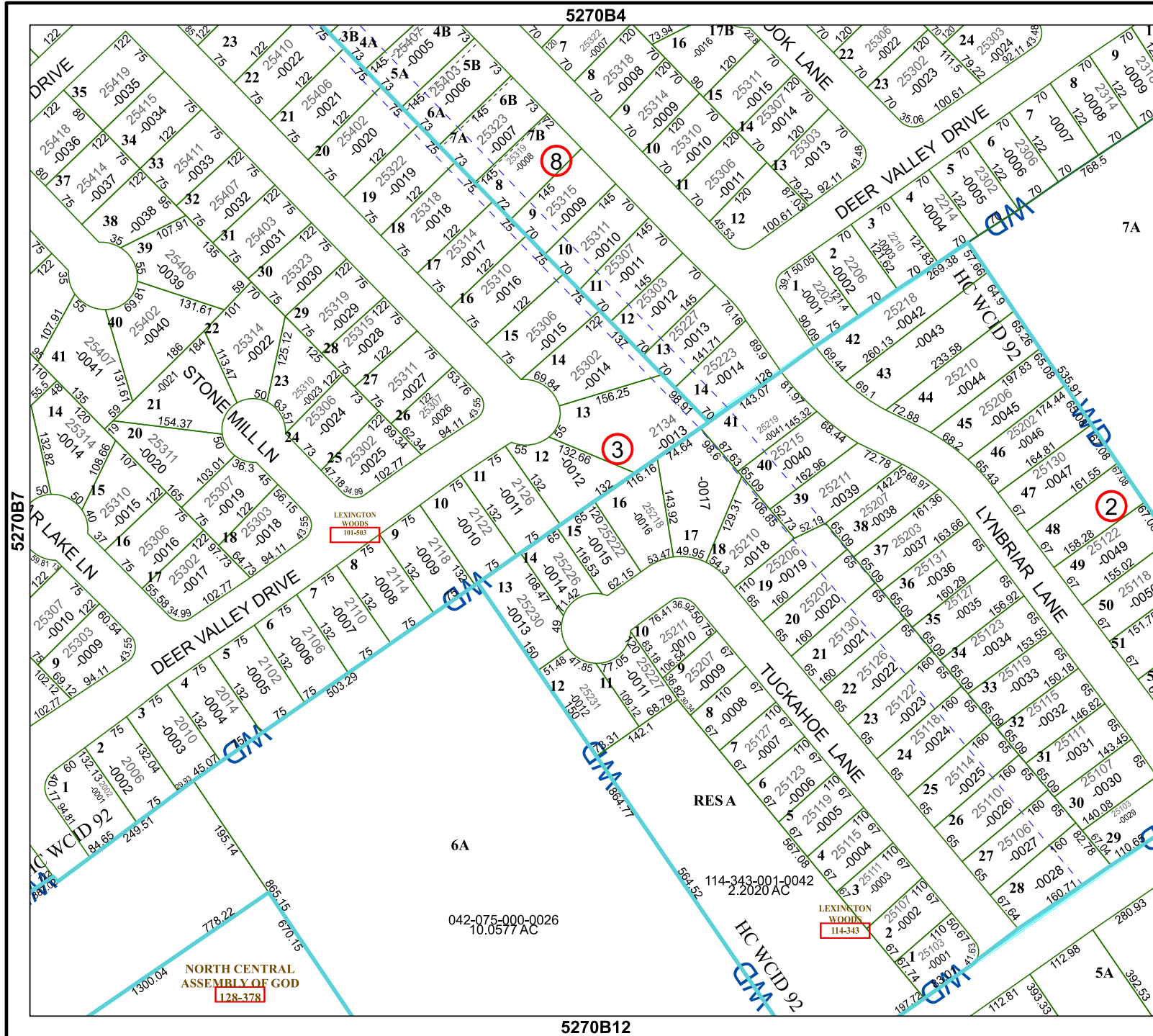
Geospatial or map data maintained by the Harris Central Appraisal District is for informational purposes and may not have been prepared for or be suitable for legal, engineering, or surveying purposes. It does not represent an on-the-ground survey and only represents the approximate location of property boundaries.

MAP LOCATION



## FACET 5270B8

2	3	4	1	2
6	7	8	5	6
10	11	12	9	10



5270B12

NORTH CENTRAL ASSEMBLY OF GOD  
128-378

LEXINGTON WOODS  
114-343

LEXINGTON WOODS  
101-583

042-075-000-0026  
10.0577 AC

114-343-001-0042  
2.2020 AC