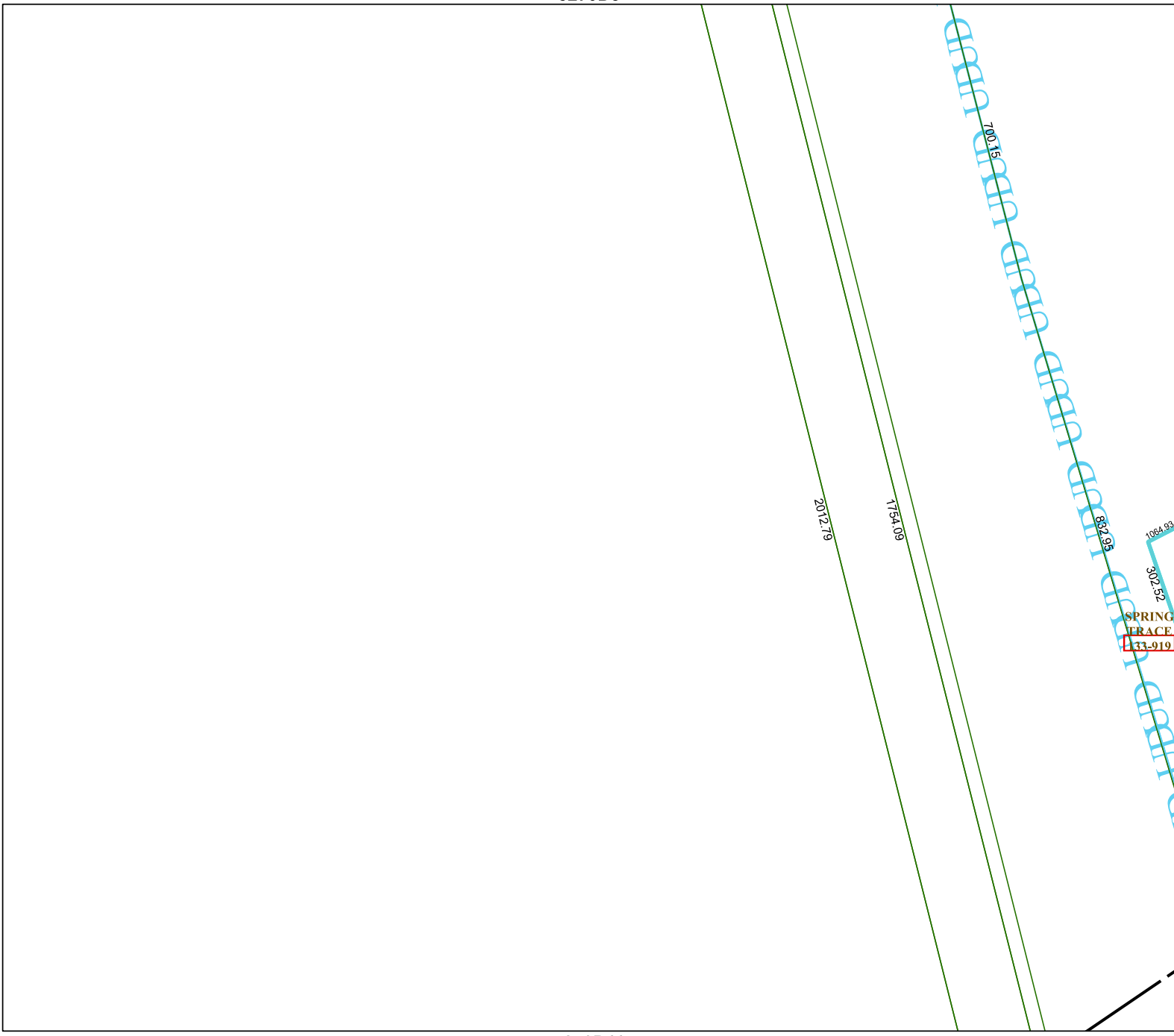


5270D3

5270D6



Harris Central Appraisal District



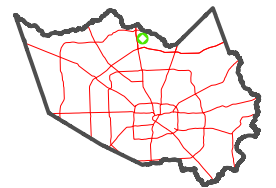
0 45 90 180 Feet

PUBLICATION DATE:
5/22/2023

Geospatial or map data maintained by the Harris Central Appraisal District is for informational purposes and may **not** have been prepared for or be suitable for legal, engineering, or surveying purposes. It does **not** represent an on-the-ground survey and only represents the approximate location of property boundaries.



MAP LOCATION



FACET 5270D7

1	2	3	4	1
5	6	7	8	5
9	10	11	12	9

5270D11

5270D8