

5351A7

CITY PARK WEST SEC 3

130-197

5351C3

# Harris Central Appraisal District

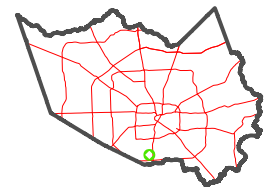


0 45 90 180 Feet

PUBLICATION DATE: 12/30/2023

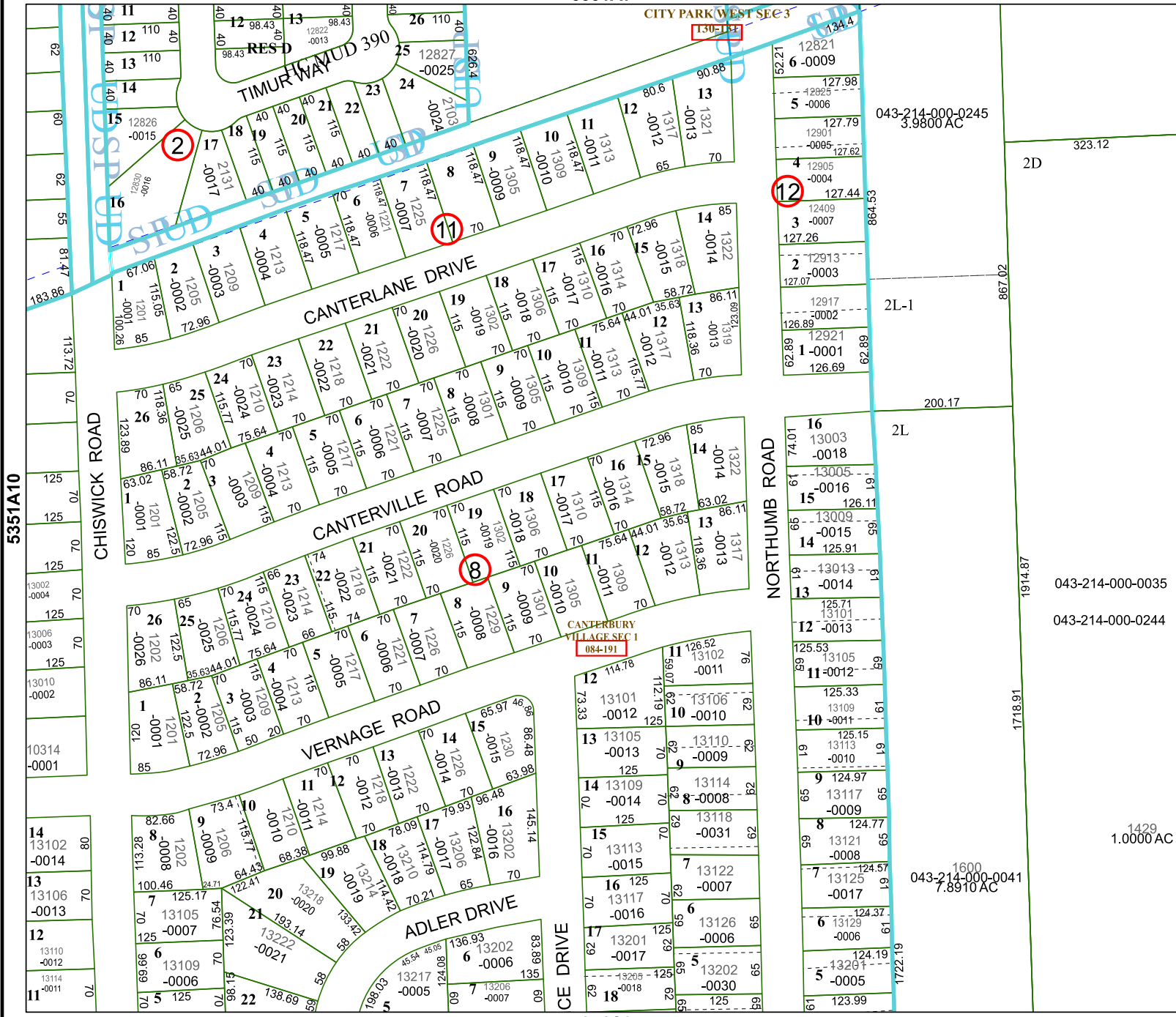
Geospatial or map data maintained by the Harris Central Appraisal District is for informational purposes and may not have been prepared for or be suitable for legal, engineering, or surveying purposes. It does not represent an on-the-ground survey and only represents the approximate location of property boundaries.

MAP LOCATION



## FACET 5351A11

5	6	7	8	5
9	10	11	12	9
1	2	3	4	1



5351A10

5351A12

1429 1.0000 AC

1600 7.8910 AC

043-214-000-0245 3.9800 AC

043-214-000-0035

043-214-000-0244

043-214-000-0041 7.8910 AC