

Harris Central Appraisal District



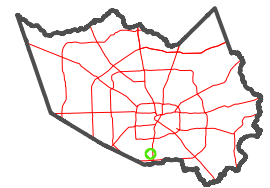
0 45 90 180 Feet

PUBLICATION DATE:
12/30/2023

Geospatial or map data maintained by the Harris Central Appraisal District is for informational purposes and may not have been prepared for or be suitable for legal, engineering, or surveying purposes. It does not represent an on-the-ground survey and only represents the approximate location of property boundaries.



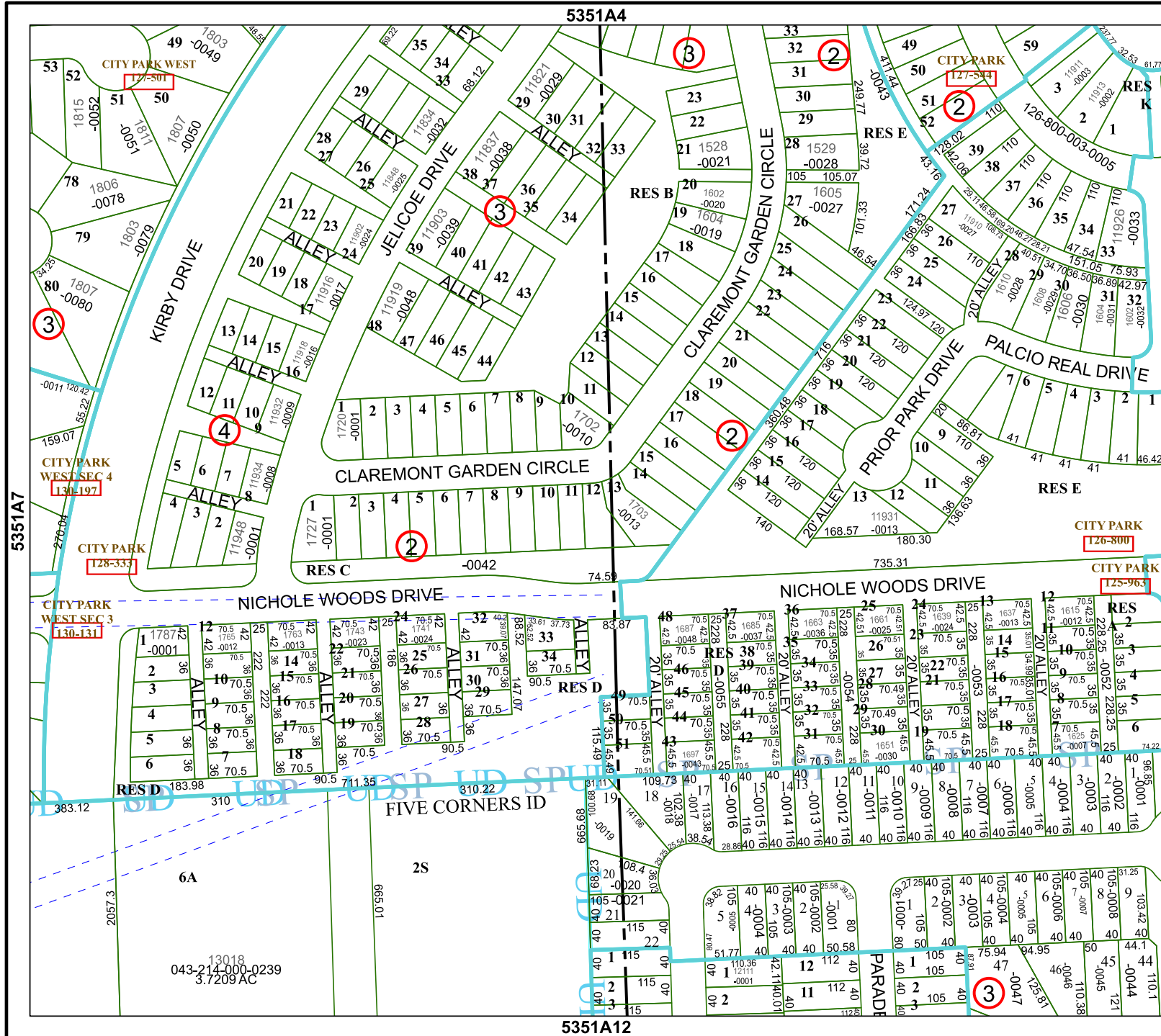
MAP LOCATION



FACET

5351A8

2	3	4	1	2
6	7	8	5	6
10	11	12	9	10



5351A4

5351A2

5351A7

5351B5

13018
043-214-000-0239
3,7209 AC