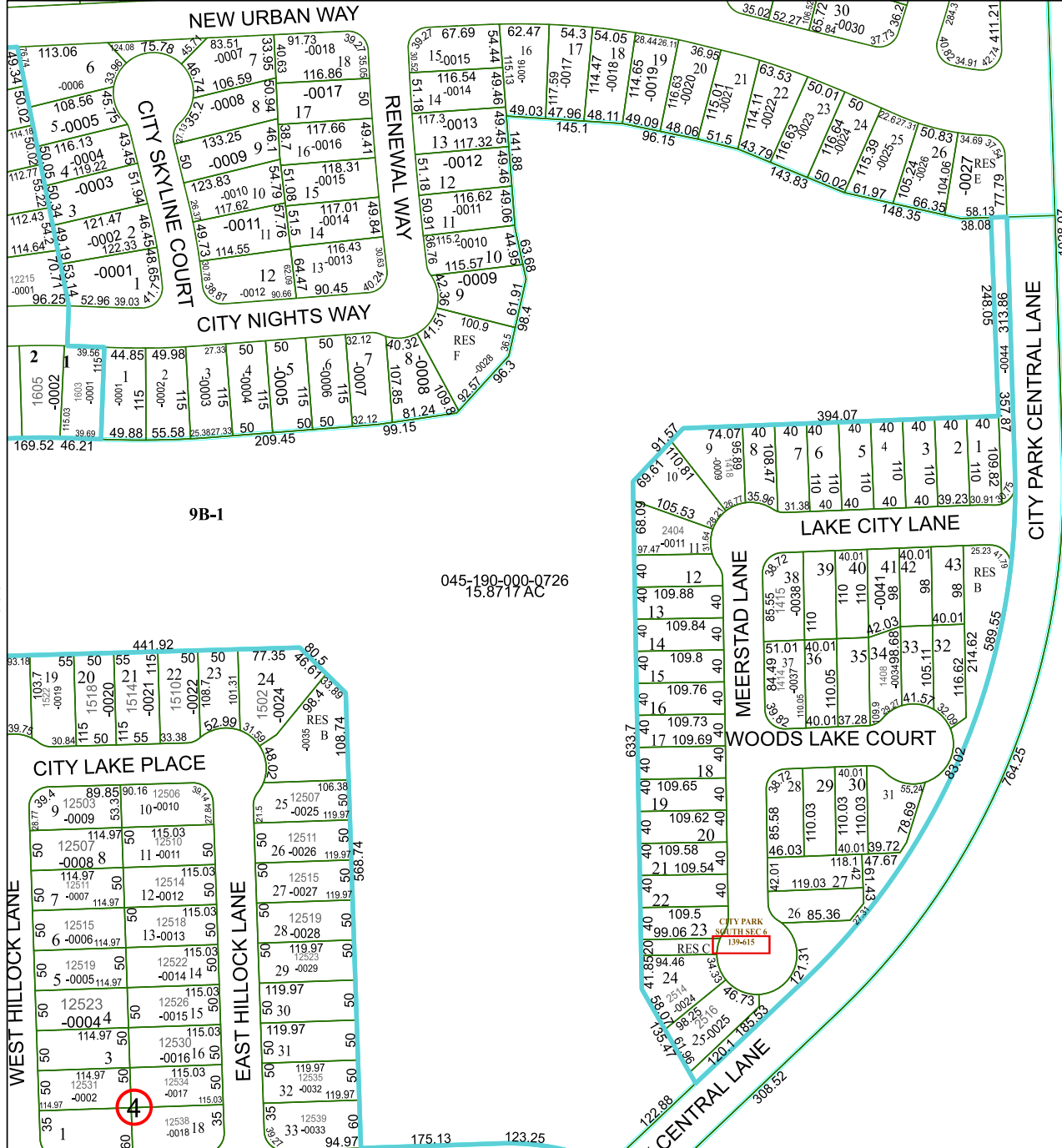


5351B5



5351D1

Harris Central Appraisal District

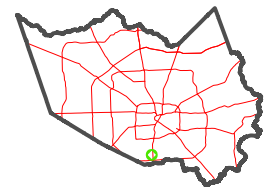


0 45 90 180 Feet

PUBLICATION DATE:
5/11/2023

Geospatial or map data maintained by the Harris Central Appraisal District is for informational purposes and may not have been prepared for or be suitable for legal, engineering, or surveying purposes. It does not represent an on-the-ground survey and only represents the approximate location of property boundaries.

MAP LOCATION



FACET

5351B9

7	8	5	6	7
11	12	9	10	11
3	4	1	2	3

5351A12

9B-1

045-190-000-0726
15.8717 AC

045-190-000-0080
49.8575 AC

5351B10

