

Harris Central Appraisal District



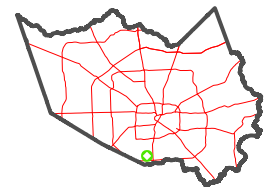
0 45 90 180 Feet

PUBLICATION DATE:
2/27/2023

Geospatial or map data maintained by the Harris Central Appraisal District is for informational purposes and may not have been prepared for or be suitable for legal, engineering, or surveying purposes. It does not represent an on-the-ground survey and only represents the approximate location of property boundaries.



MAP LOCATION

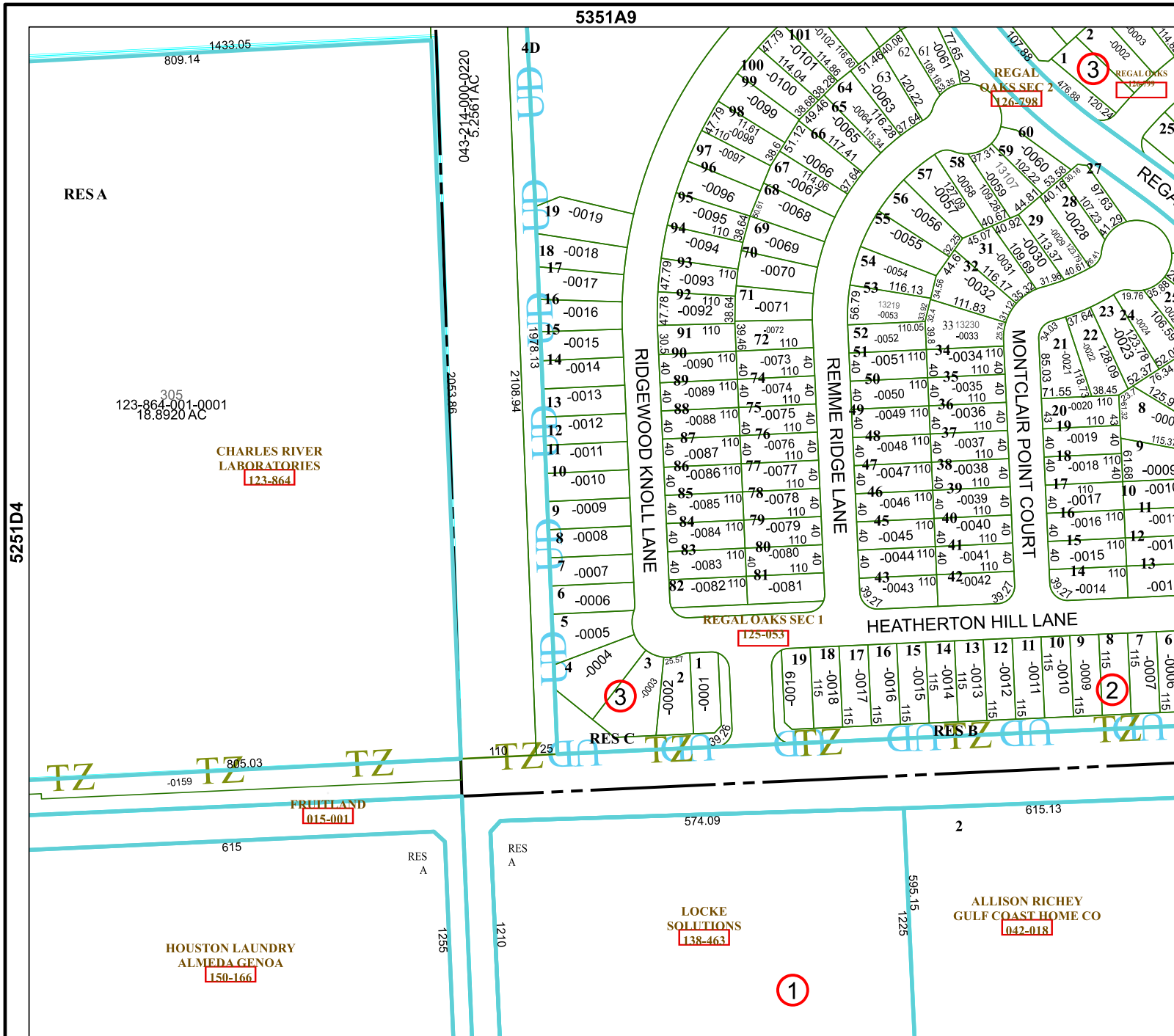


FACET 5351C1

11	12	9	10	11
3	4	1	2	3
7	8	5	6	7

5351A9

5351C5



RES A

305
123-864-001-0001
18.8920 AC

CHARLES RIVER
LABORATORIES
123-864

5251D4

HOUSTON LAUNDRY
ALMEDA GENOA
150-166

LOCKE
SOLUTIONS
138-463

ALLISON RICHEY
GULF COAST HOME CO
042-018

1

3

2