

5351D2

1011.99

Harris Central Appraisal District



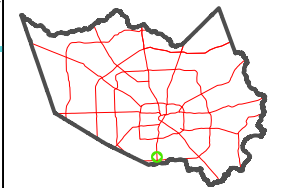
0 50 100 200 Feet

PUBLICATION DATE:
12/15/2025

Geospatial or map data maintained by the Harris Central Appraisal District is for informational purposes and may **not** have been prepared for or be suitable for legal, engineering, or surveying purposes. It does **not** represent an on-the-ground survey and only represents the approximate location of property boundaries.



MAP LOCATION



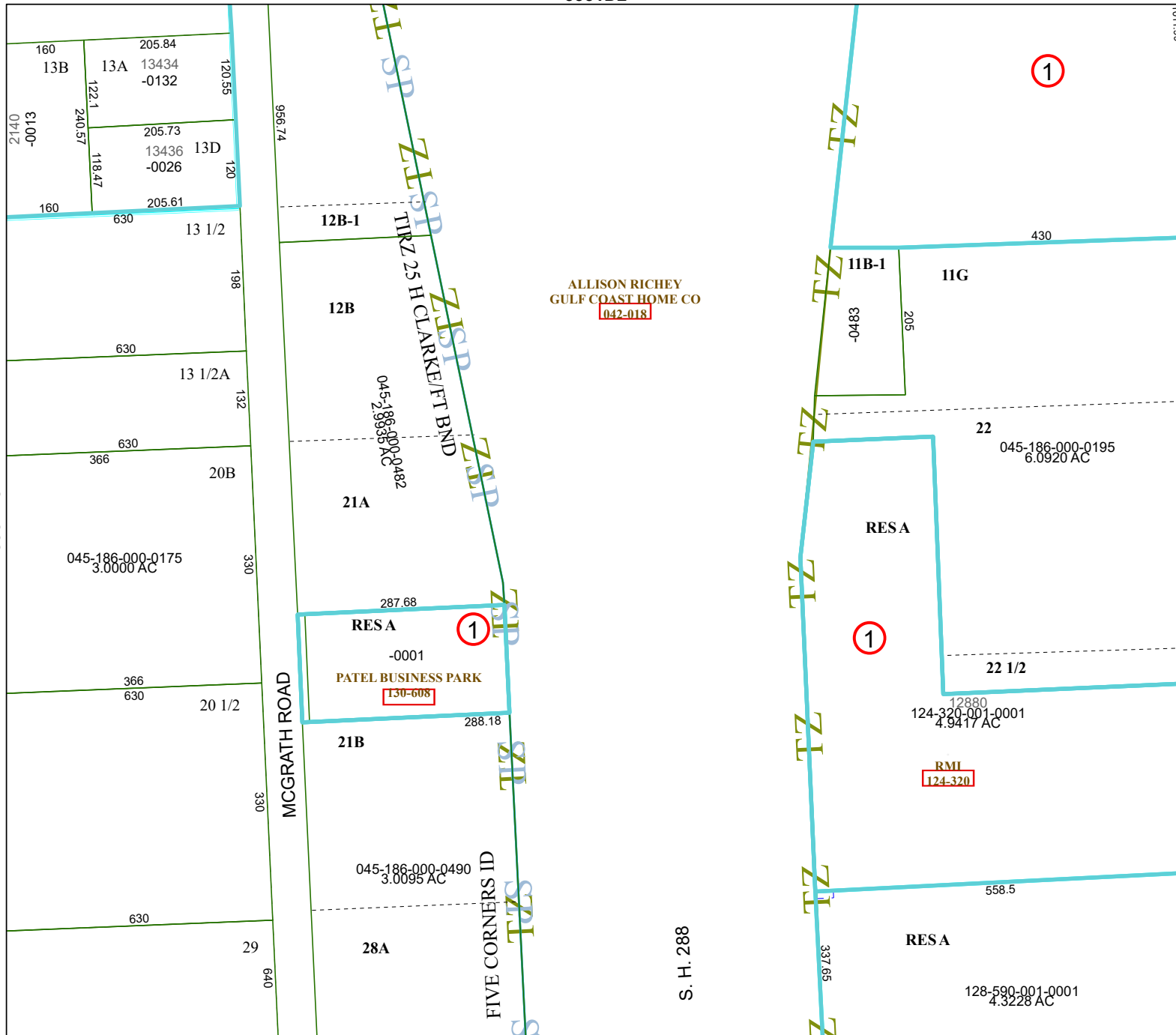
FACET 5351D6

4	1	2	3	4
8	5	6	7	8
12	9	10	11	12

5351D5

5351D7

5351D10



S. H. 288