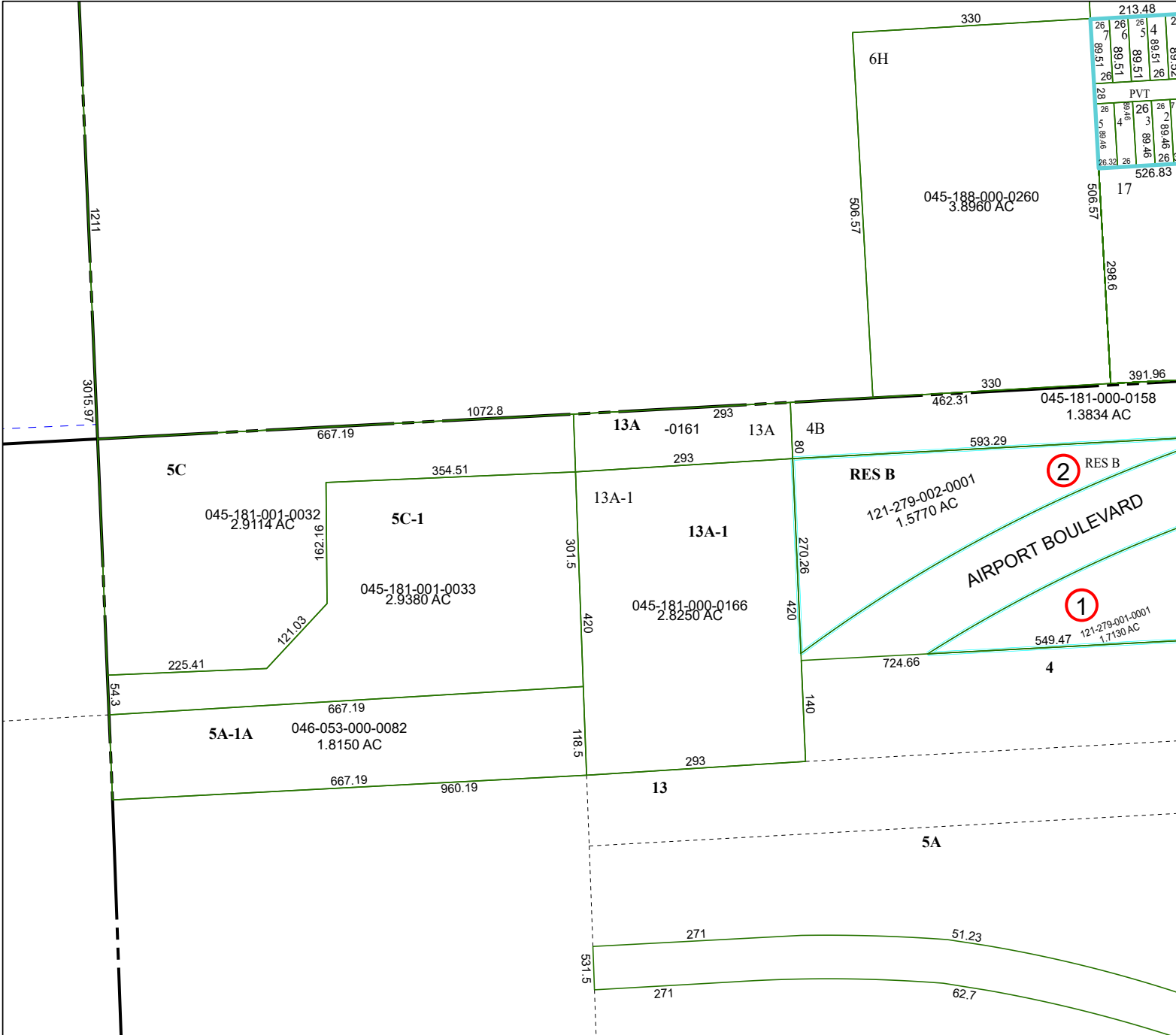


5352A5

5252B12



5352C1

Harris Central Appraisal District

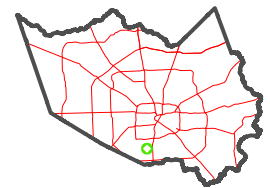


0 50 100 200 Feet

PUBLICATION DATE:
12/15/2025

Geospatial or map data maintained by the Harris Central Appraisal District is for informational purposes and may **not** have been prepared for or be suitable for legal, engineering, or surveying purposes. It does **not** represent an on-the-ground survey and only represents the approximate location of property boundaries.

MAP LOCATION



FACET 5352A9

7	8	5	6	7
11	12	9	10	11
3	4	1	2	3

2 RES B

1