

5353A2

# Harris Central Appraisal District



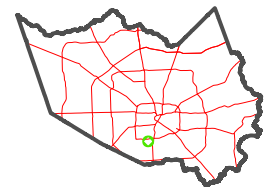
0 45 90 180 Feet

PUBLICATION DATE: 1/6/2023

Geospatial or map data maintained by the Harris Central Appraisal District is for informational purposes and may not have been prepared for or be suitable for legal, engineering, or surveying purposes. It does not represent an on-the-ground survey and only represents the approximate location of property boundaries.



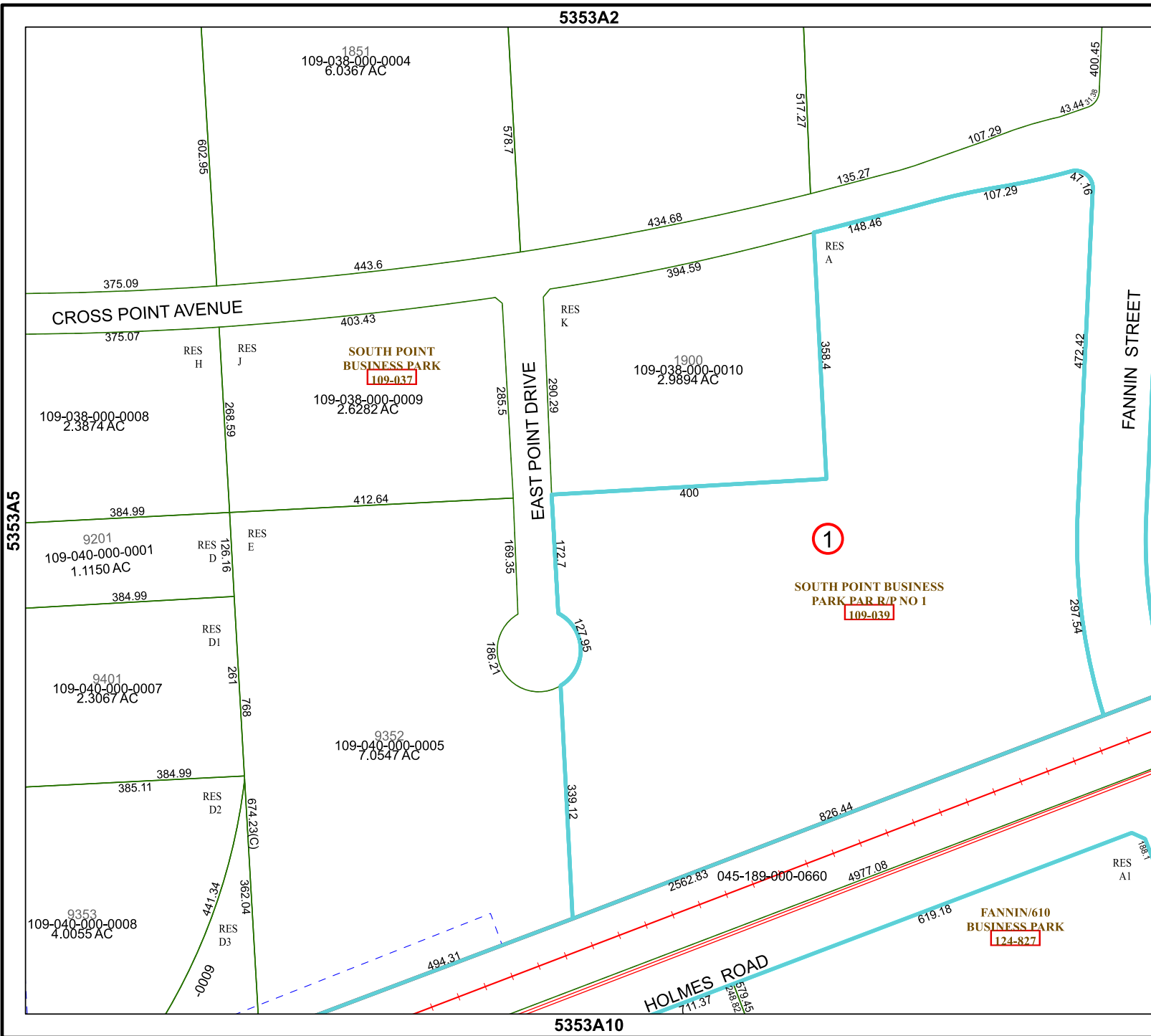
## MAP LOCATION



# FACET 5353A6

4	1	2	3	4
8	5	6	7	8
12	9	10	11	12

5353A10



5353A5

5353A7

FANNIN STREET

EAST POINT DRIVE

HOLMES ROAD

1

SOUTH POINT BUSINESS PARK PAR R/P NO 1  
109-039

FANNIN/610 BUSINESS PARK  
124-827

SOUTH POINT BUSINESS PARK  
109-037