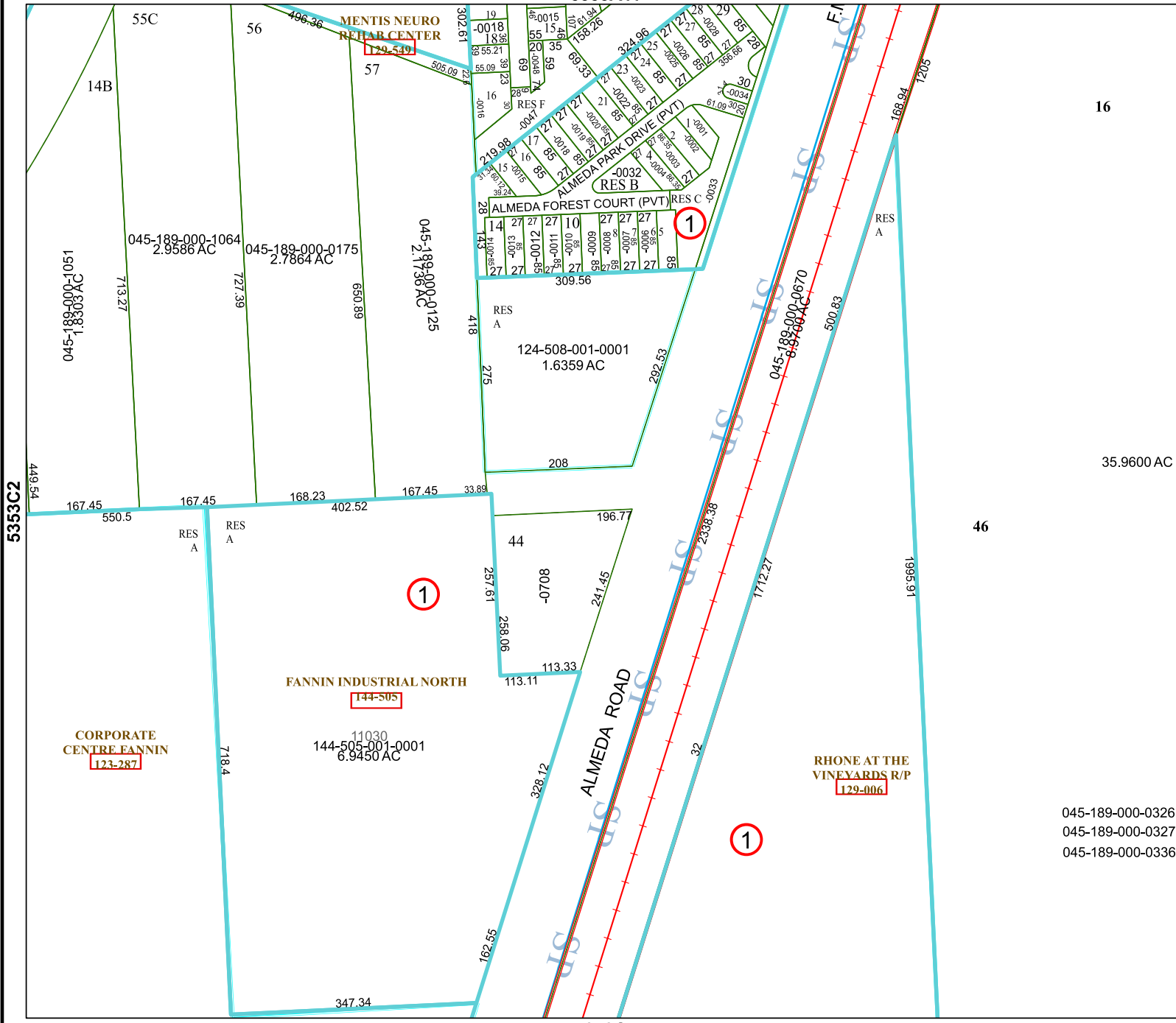


5353A11

5353C7



Harris Central Appraisal District

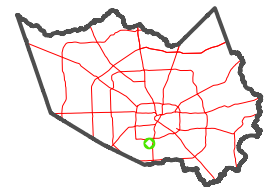


0 45 90 180 Feet

PUBLICATION DATE:
5/21/2024

Geospatial or map data maintained by the Harris Central Appraisal District is for informational purposes and may not have been prepared for or be suitable for legal, engineering, or surveying purposes. It does not represent an on-the-ground survey and only represents the approximate location of property boundaries.

MAP LOCATION



FACET

5353C3

9	10	11	12	9
1	2	3	4	1
5	6	7	8	5

16

35.9600 AC

46

045-189-000-0326
045-189-000-0327
045-189-000-0336

