

5353A12

PIERCE JUNCTION  
BUSINESS PARK  
132-995

# Harris Central Appraisal District



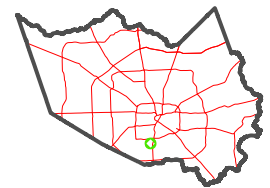
0 45 90 180  
Feet

PUBLICATION DATE:  
4/8/2024

Geospatial or map data maintained by the Harris Central Appraisal District is for informational purposes and may not be suitable for legal, engineering, or surveying purposes. It does not represent an on-the-ground survey and only represents the approximate location of property boundaries.



MAP LOCATION



## FACET 5353C4

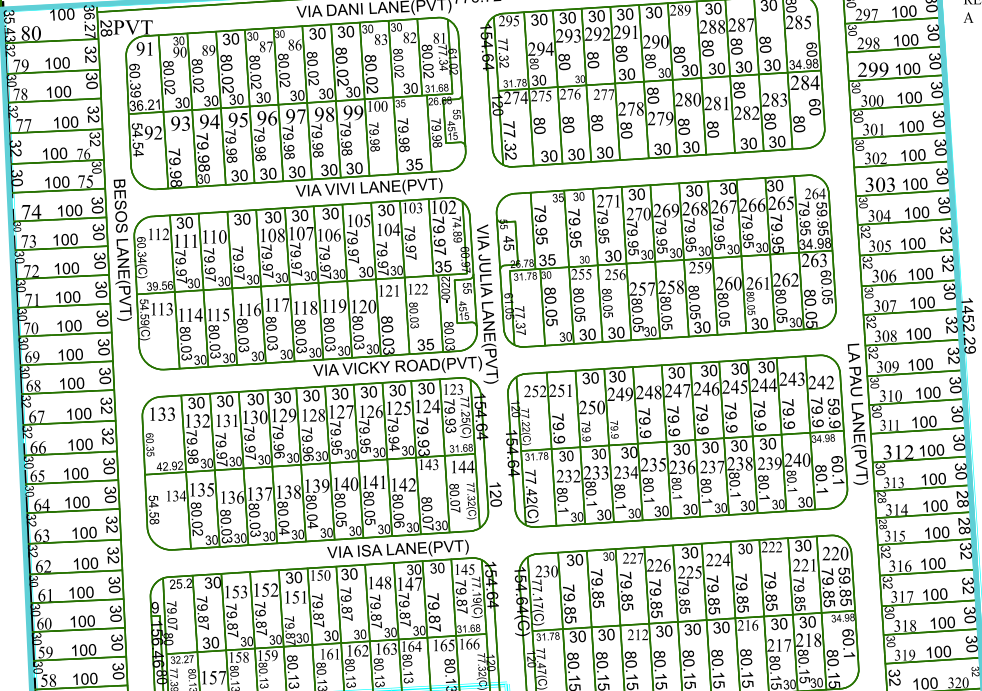
10	11	12	9	10
2	3	4	1	2
6	7	8	5	6

5353C3

35-9600 AC

4

452.3  
3400



5353C8

STAR OF HOPE  
REED ROAD  
135-186

5353D1