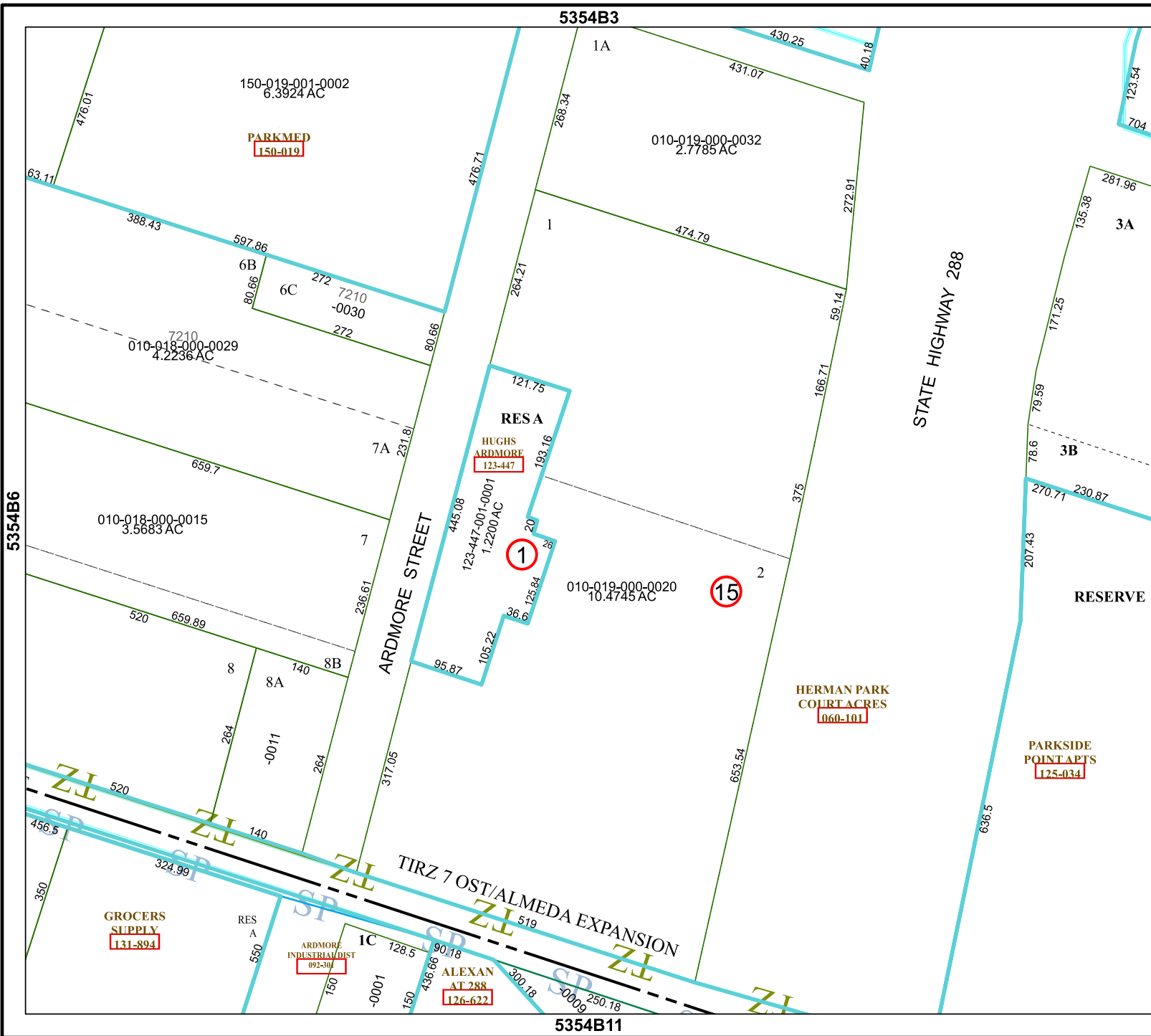


5354B3

5354B11



Harris Central Appraisal District



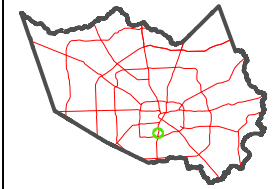
0 45 90 180 Feet

PUBLICATION DATE: 3/25/2024

Geospatial or map data maintained by the Harris Central Appraisal District is for informational purposes and may not have been prepared for or be suitable for legal, engineering, or surveying purposes. It does not represent an on-the-ground survey and only represents the approximate location of property boundaries.



MAP LOCATION



FACET 5354B7

1	2	3	4	1
5	6	7	8	5
9	10	11	12	9

PARKMED
150-019

RESA
HUGHS ARDMORE
123-447

1

15

HERMAN PARK COURT ACRES
060-101

PARKSIDE POINT APTS
125-034

GROCCERS SUPPLY
131-894

ARDMORE INDUSTRIAL DIST
092-300

ALEXAN AT 288
126-622