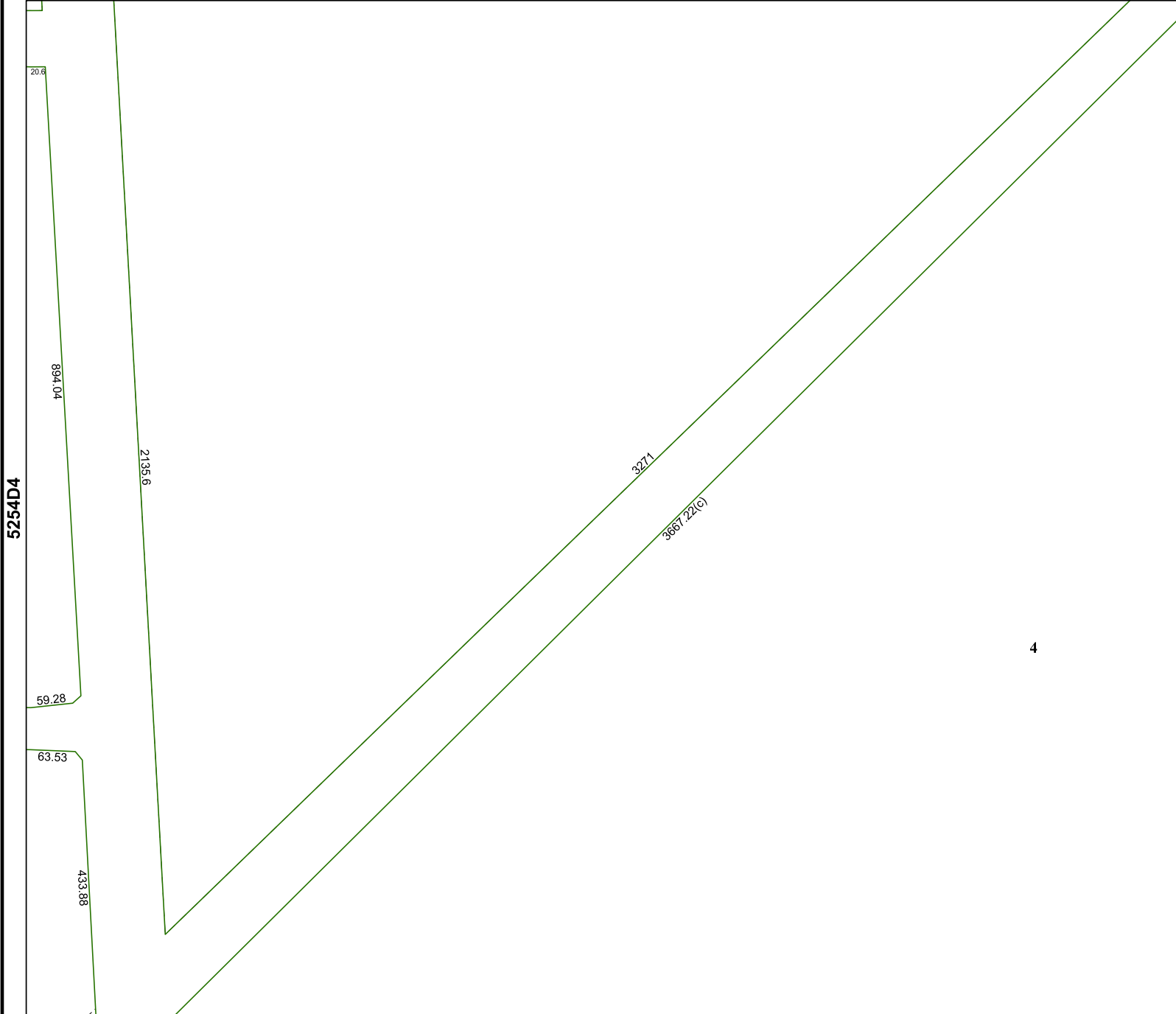


5354A9



5254D4

5354C5

Harris Central Appraisal District



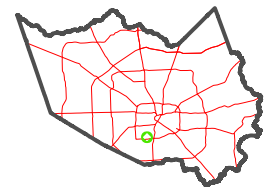
0 45 90 180
Feet

PUBLICATION DATE:
1/6/2023

Geospatial or map data maintained by the Harris Central Appraisal District is for informational purposes and may **not** have been prepared for or be suitable for legal, engineering, or surveying purposes. It does **not** represent an on-the-ground survey and only represents the approximate location of property boundaries.



MAP LOCATION



FACET

5354C1

11	12	9	10	11
3	4	1	2	3
7	8	5	6	7

4