

Harris Central Appraisal District

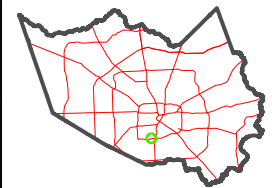


0 45 90 180 Feet

PUBLICATION DATE: 1/6/2023

Geospatial or map data maintained by the Harris Central Appraisal District is for informational purposes and may not have been prepared for or be suitable for legal, engineering, or surveying purposes. It does not represent an on-the-ground survey and only represents the approximate location of property boundaries.

MAP LOCATION



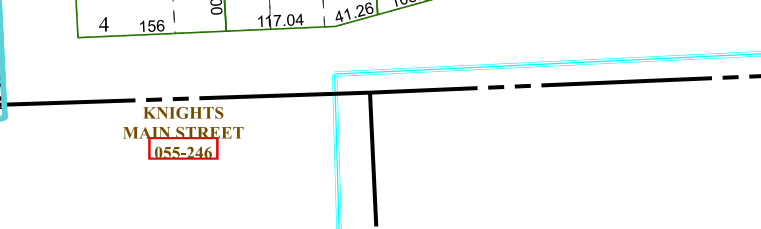
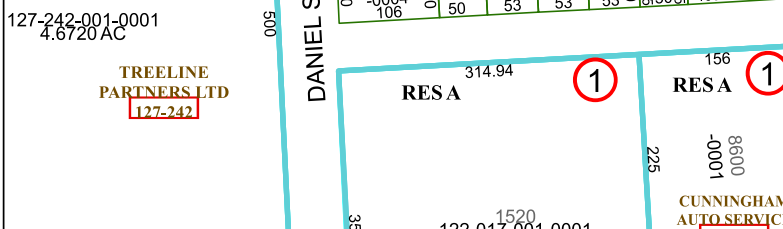
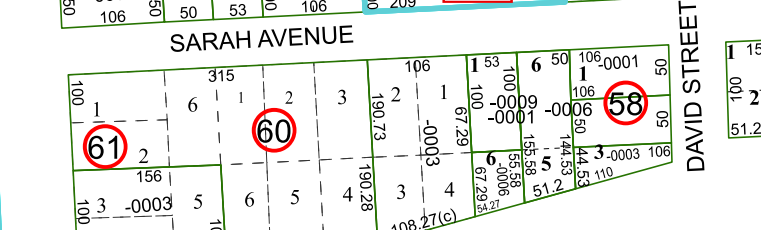
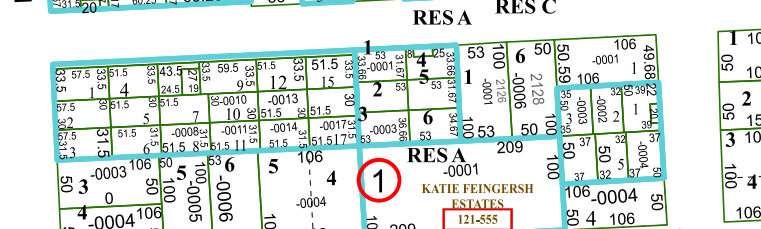
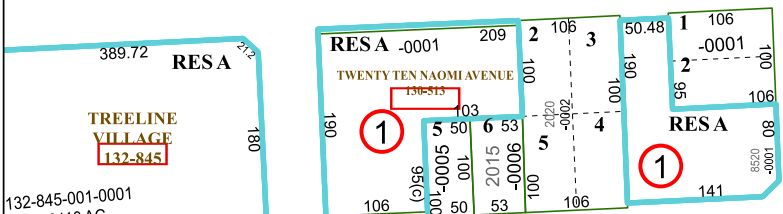
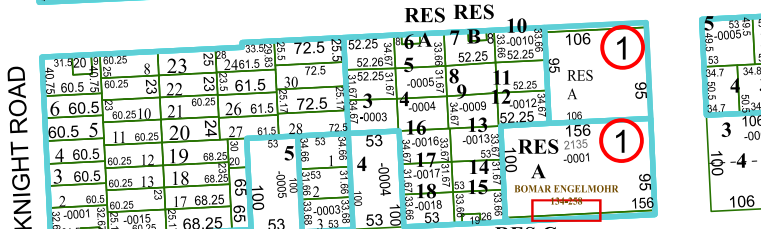
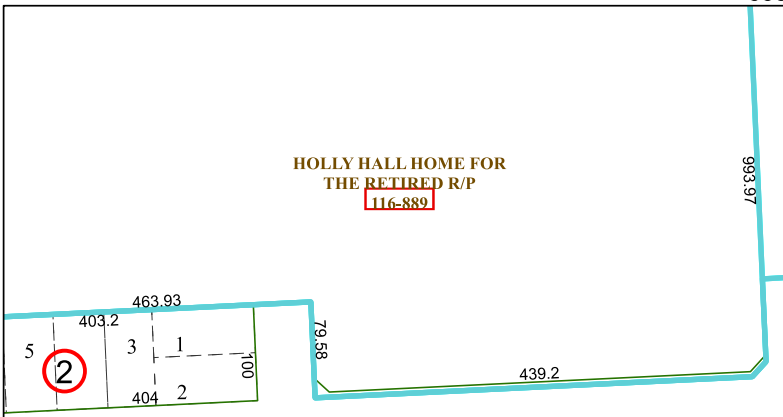
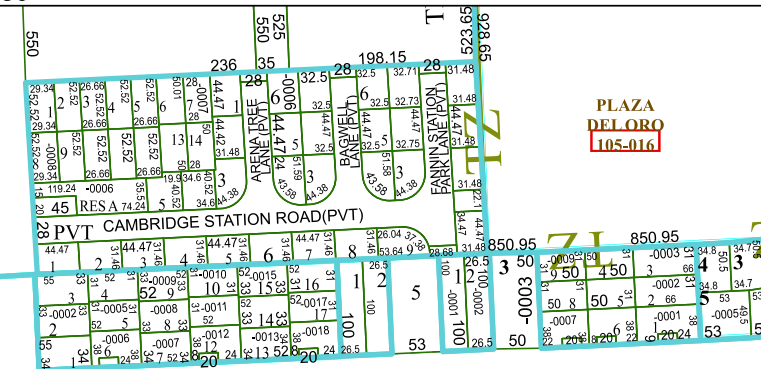
FACET 5354C7

1	2	3	4	1
5	6	7	8	5
9	10	11	12	9

5354C3

HOLLY HALL HOME FOR THE RETIRED R/P
116-889

PLAZA DEL ORO
105-016



5354C11

5354C6

5354C8

