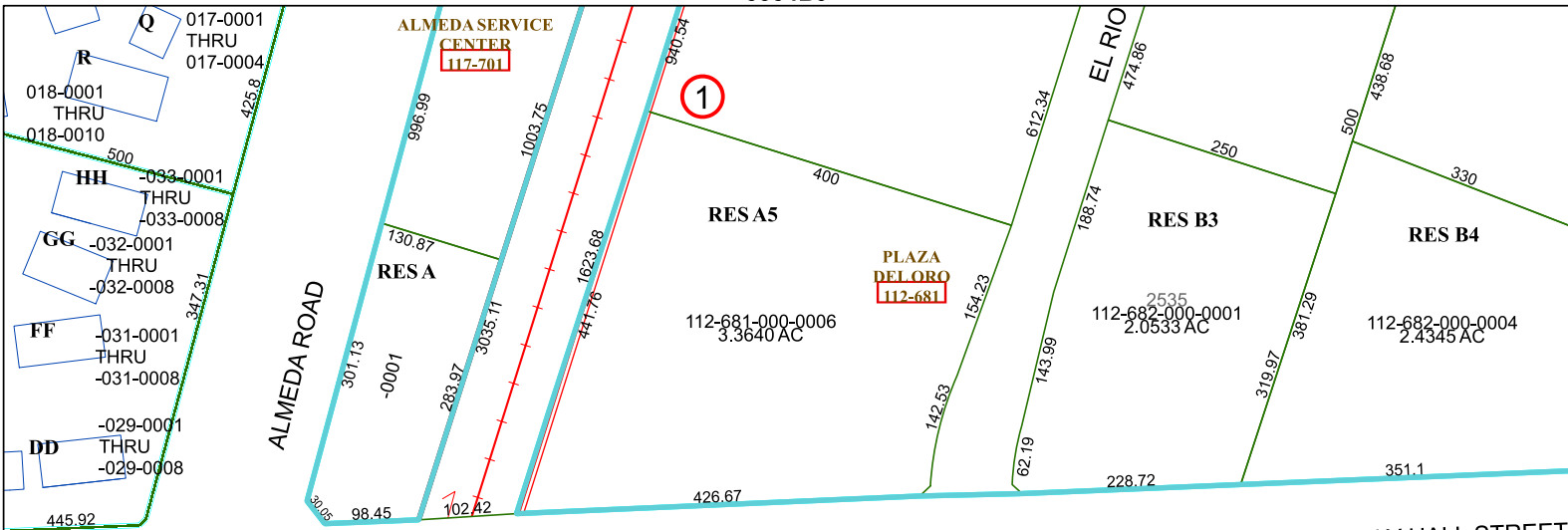
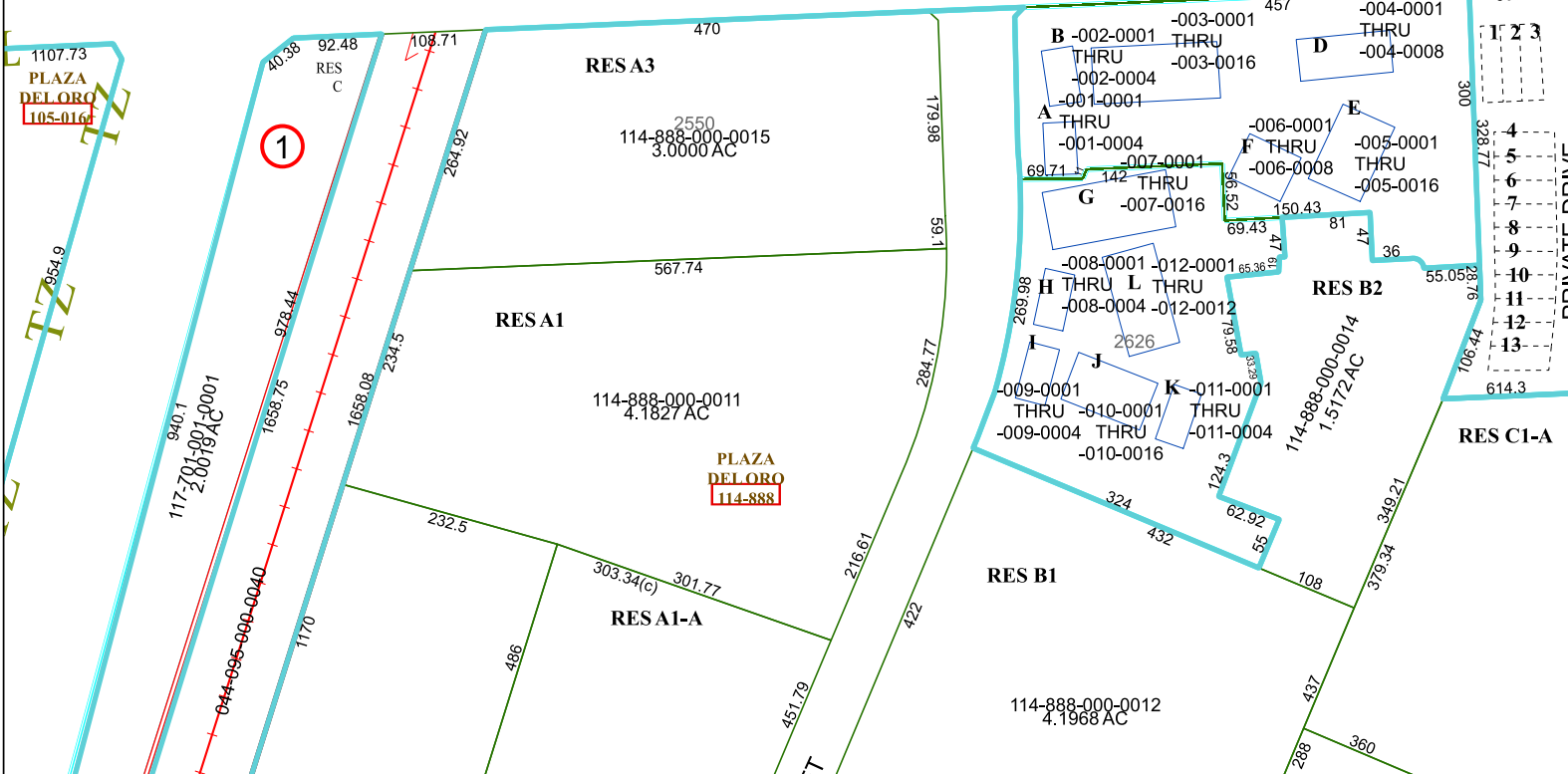


5354B9



HOLLY HALL STREET

5354D5



# Harris Central Appraisal District

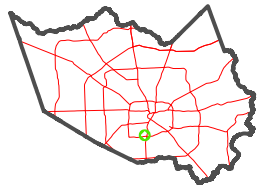


0 45 90 180 Feet

PUBLICATION DATE: 1/6/2023

Geospatial or map data maintained by the Harris Central Appraisal District is for informational purposes and may not have been prepared for or be suitable for legal, engineering, or surveying purposes. It does not represent an on-the-ground survey and only represents the approximate location of property boundaries.

### MAP LOCATION



## FACET 5354D1

11	12	9	10	11
3	4	1	2	3
7	8	5	6	7

5354C4

5354D2

