

5355A6

# Harris Central Appraisal District



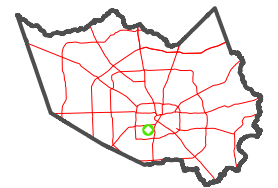
0 45 90 180 Feet

PUBLICATION DATE: 3/11/2024

Geospatial or map data maintained by the Harris Central Appraisal District is for informational purposes and may not have been prepared for or be suitable for legal, engineering, or surveying purposes. It does not represent an on-the-ground survey and only represents the approximate location of property boundaries.



MAP LOCATION

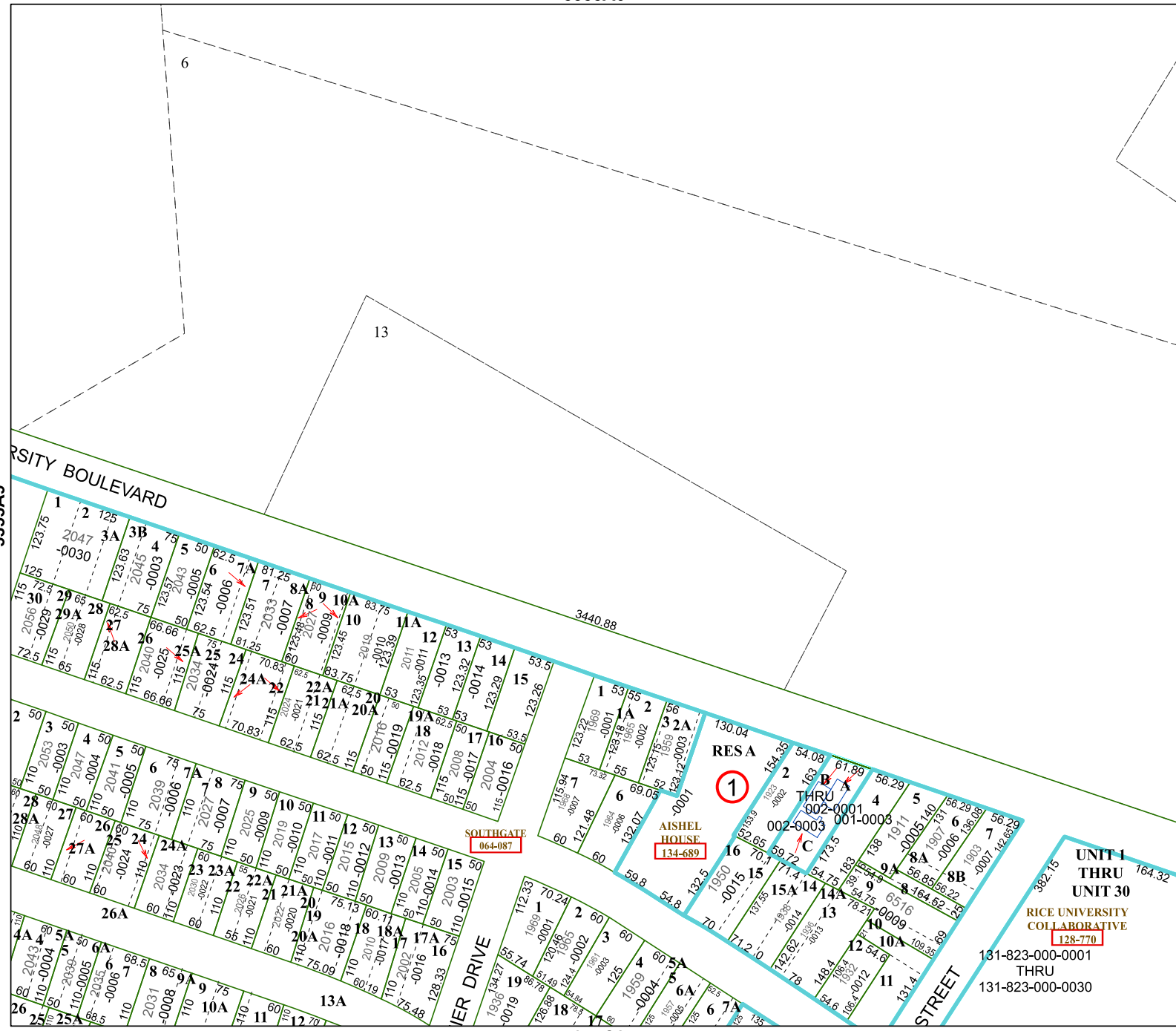


## FACET 5355A10

8	5	6	7	8
12	9	10	11	12
4	1	2	3	4

5355A9

5355A11



UNIVERSITY BOULEVARD

SOUTHGATE 064-087

AISHEL HOUSE 134-689

RESA

UNIT 1 THRU UNIT 30

RICE UNIVERSITY COLLABORATIVE 128-770

131-823-000-001 THRU 131-823-000-0030

5355C2