

Harris Central Appraisal District

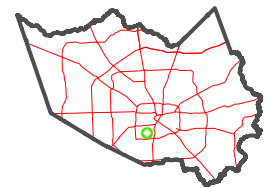


0 45 90 180 Feet

PUBLICATION DATE:
4/24/2023

Geospatial or map data maintained by the Harris Central Appraisal District is for informational purposes and may not have been prepared for or be suitable for legal, engineering, or surveying purposes. It does not represent an on-the-ground survey and only represents the approximate location of property boundaries.

MAP LOCATION

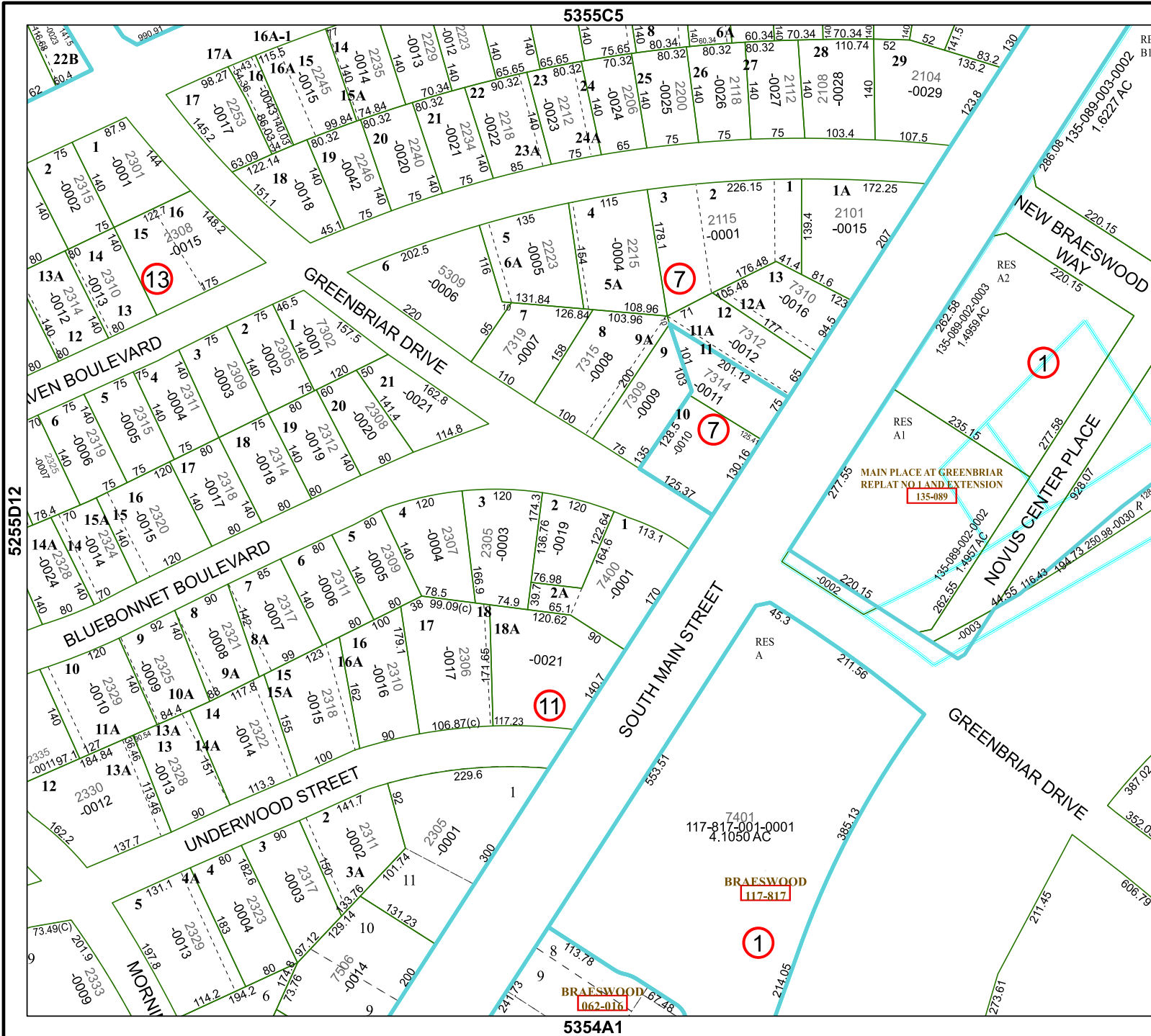


FACET 5355C9

7	8	5	6	7
11	12	9	10	11
3	4	1	2	3

5355C5

5354A1



5255D12

5355C10