

# Harris Central Appraisal District

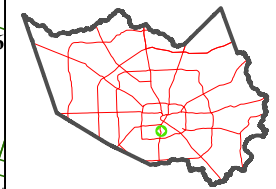


0 45 90 180 Feet

PUBLICATION DATE:  
2/4/2025

Geospatial or map data maintained by the Harris Central Appraisal District is for informational purposes and may not have been prepared for or be suitable for legal, engineering, or surveying purposes. It does not represent an on-the-ground survey and only represents the approximate location of property boundaries.

MAP LOCATION



## FACET 5355D4

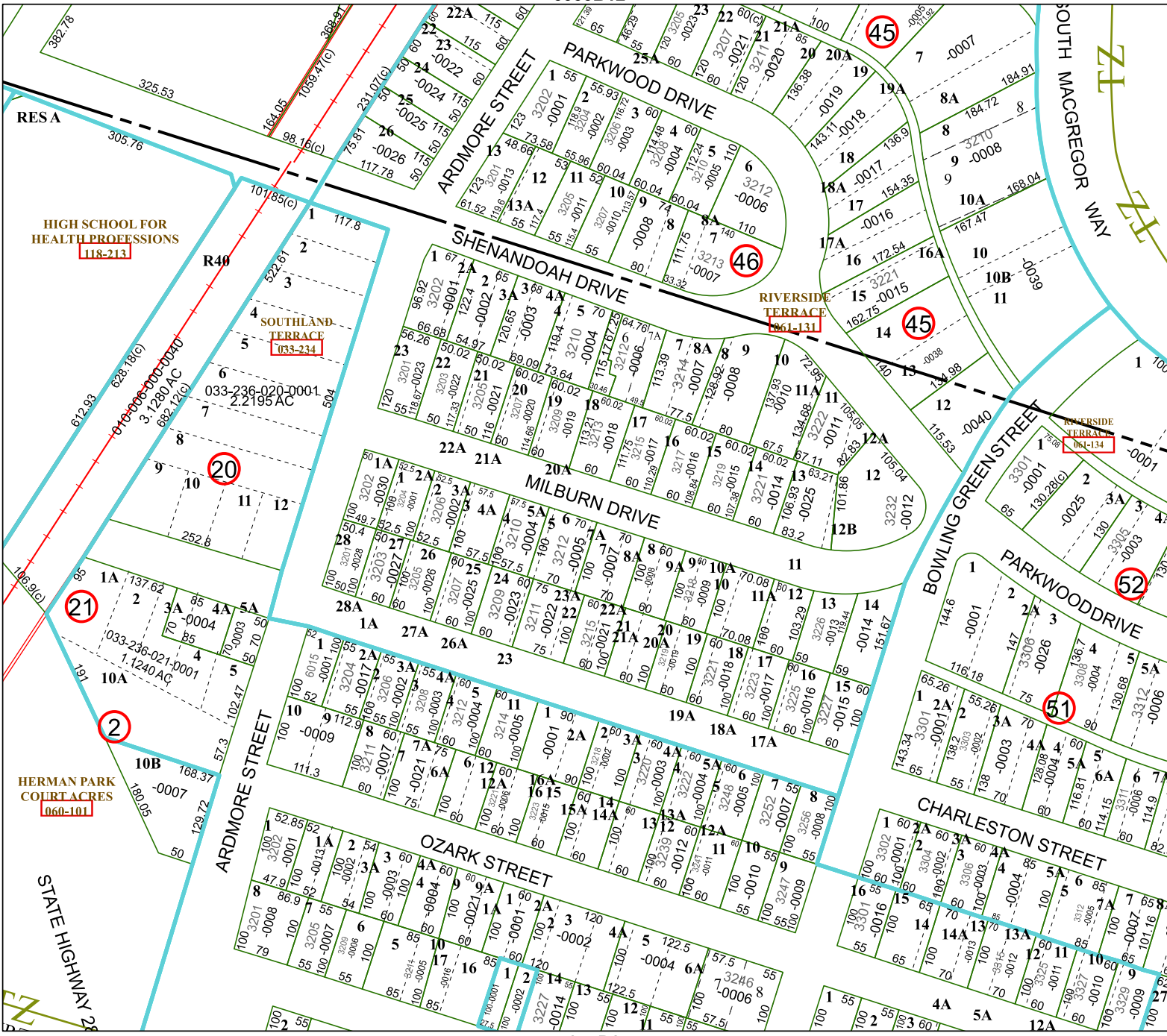
10	11	12	9	10
2	3	4	1	2
6	7	8	5	6

5355B12

5355D8

5355D3

5455C1



HIGH SCHOOL FOR HEALTH PROFESSIONS  
118-213

SOUTHLAND TERRACE  
033-234

RIVERSIDE TERRACE  
061-131

RIVERSIDE TERRACE  
061-131

HERMAN PARK COURT ACRES  
060-101