

# Harris Central Appraisal District

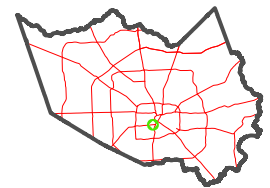


0 45 90 180 Feet

PUBLICATION DATE:  
4/22/2024

Geospatial or map data maintained by the Harris Central Appraisal District is for informational purposes and may not have been prepared for or be suitable for legal, engineering, or surveying purposes. It does not represent an on-the-ground survey and only represents the approximate location of property boundaries.

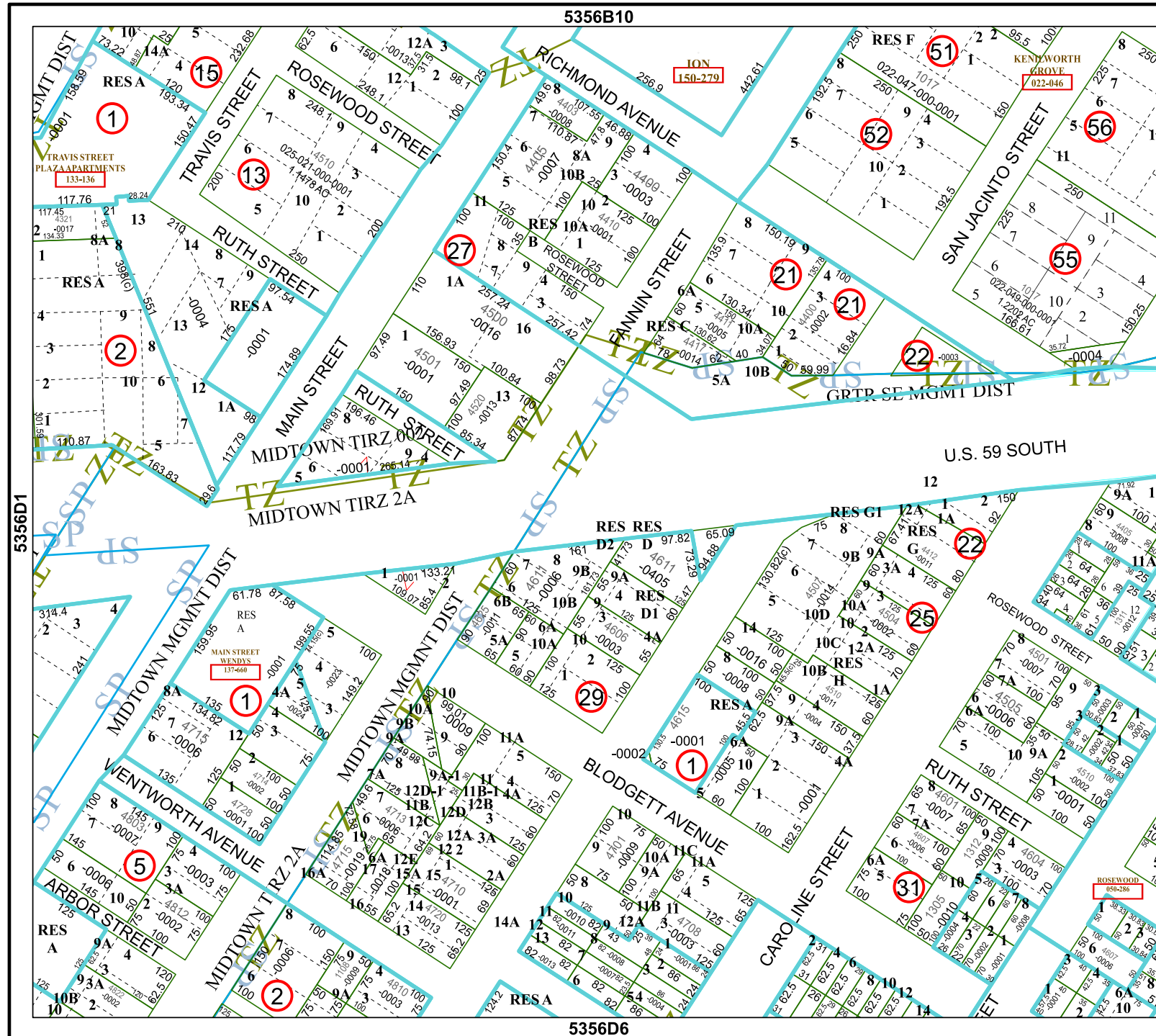
MAP LOCATION



## FACET

### 5356D2

12	9	10	11	12
4	1	2	3	4
8	5	6	7	8



5356B10

5356D6

5356D1

5356D3

ION  
150-279

KENDWORTH GROVE  
022-046

TRAVIS STREET PLAZA APARTMENTS  
133-136

MAIN STREET WENDYS  
137-660

ROSEWOOD  
850-285