

# Harris Central Appraisal District

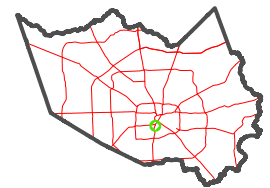


0 45 90 180 Feet

PUBLICATION DATE:  
4/22/2024

Geospatial or map data maintained by the Harris Central Appraisal District is for informational purposes and may not have been prepared for or be suitable for legal, engineering, or surveying purposes. It does not represent an on-the-ground survey and only represents the approximate location of property boundaries.

MAP LOCATION



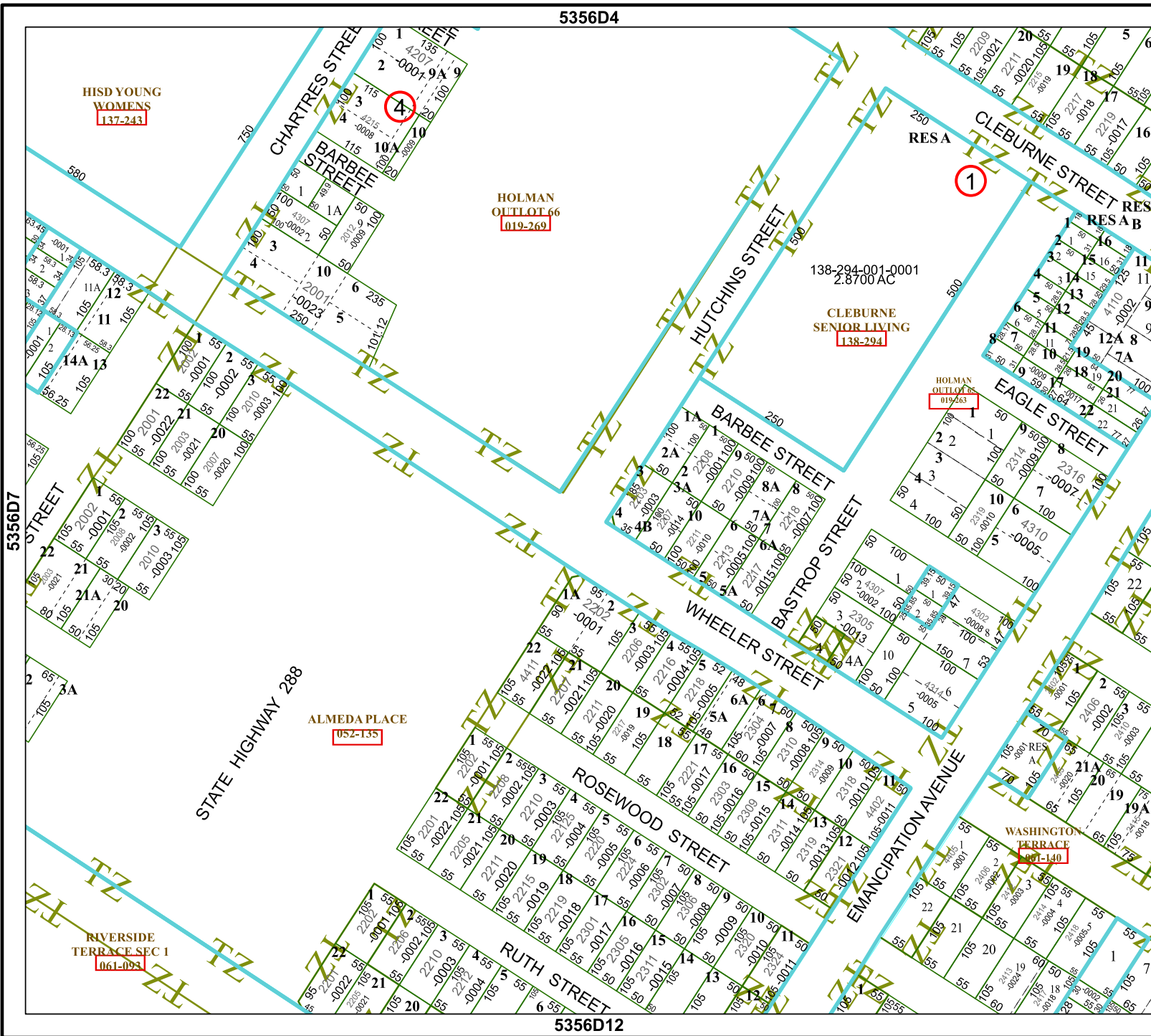
## FACET

### 5356D8

2	3	4	5	6
6	7	8	9	10
10	11	12	13	14

5356D4

5356D12



5356D7

5456C5

STATE HIGHWAY 288

RES A

RES A B

RES A B

RES A B

RES A B

RES A B

RES A B