

Harris Central Appraisal District

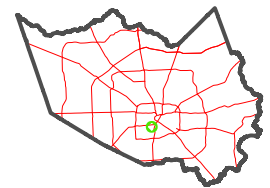


0 45 90 180 Feet

PUBLICATION DATE: 1/23/2024

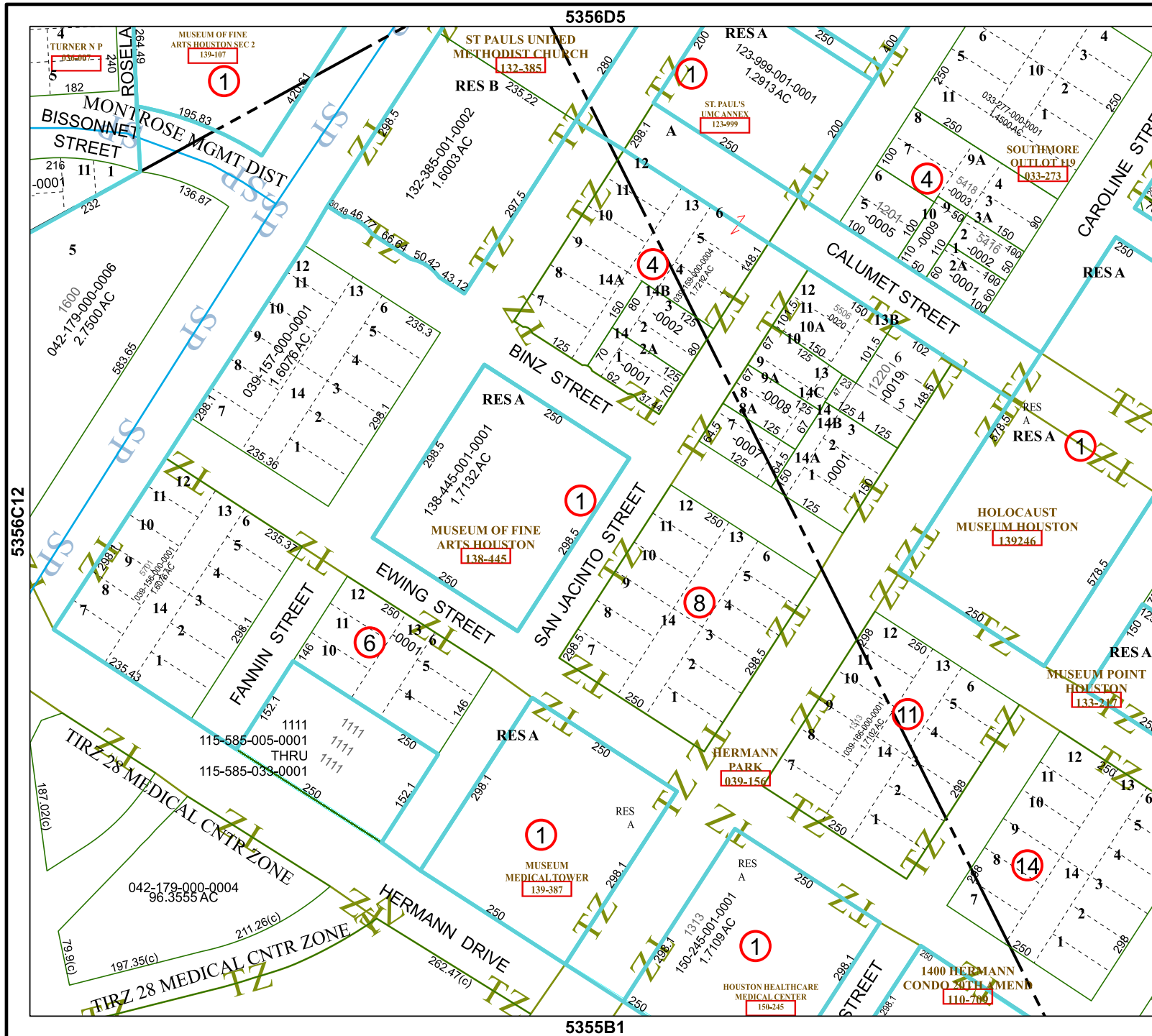
Geospatial or map data maintained by the Harris Central Appraisal District is for informational purposes and may not have been prepared for or be suitable for legal, engineering, or surveying purposes. It does not represent an on-the-ground survey and only represents the approximate location of property boundaries.

MAP LOCATION



FACET 5356D9

7	8	5	6	7
11	12	9	10	11
3	4	1	2	3



5356D5

5355B1

5356D10

5356C12

