

Harris County Appraisal District



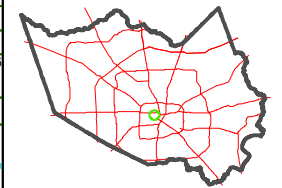
0 50 100 200 Feet

PUBLICATION DATE: 7/6/2021

Geospatial or map data maintained by the Harris County Appraisal District is for informational purposes and may not be suitable for legal, engineering, or surveying purposes. It does not represent an on-the-ground survey and only represents the approximate location of property boundaries.



MAP LOCATION

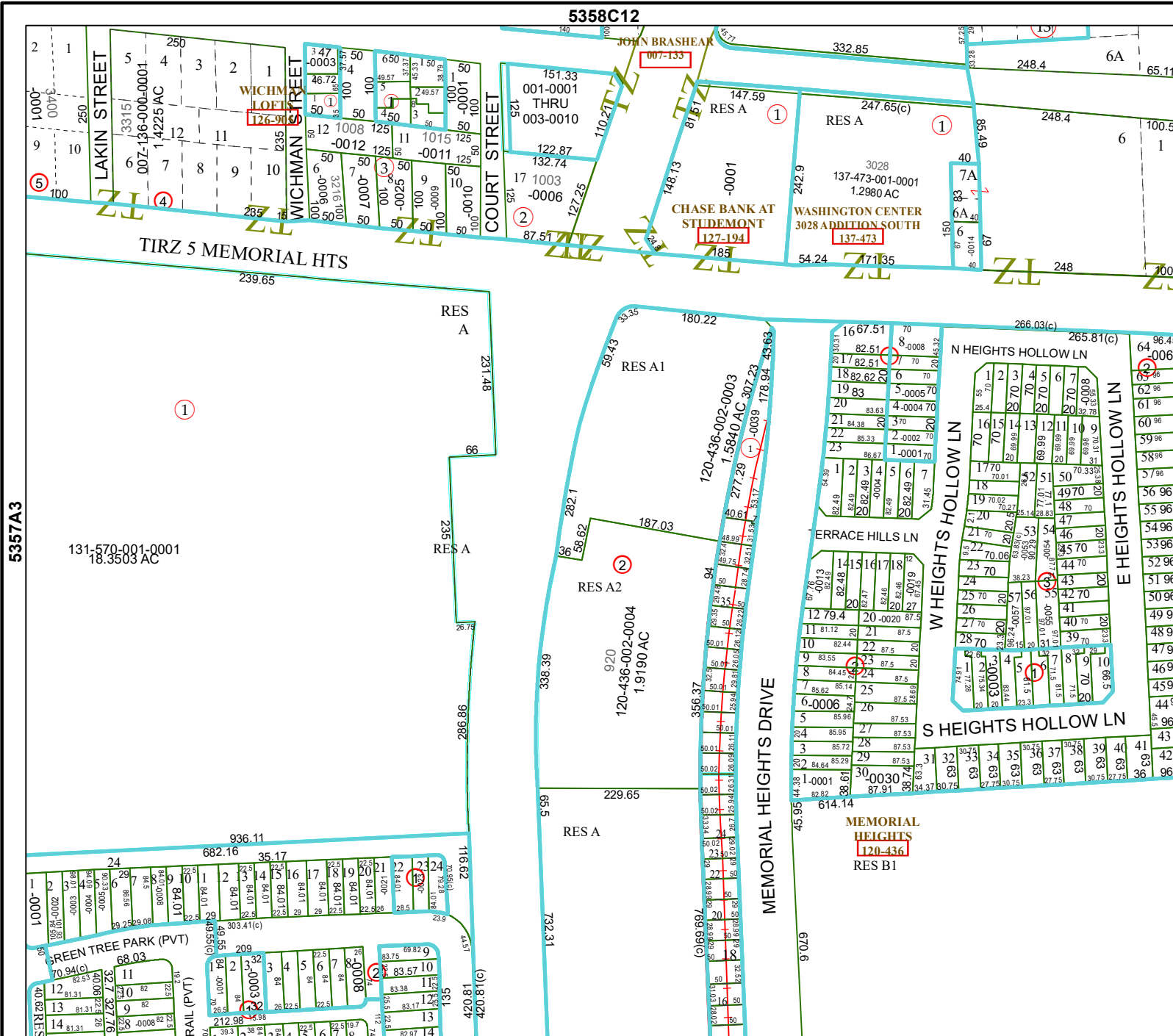


FACET 5357A4

10	11	12	9	10
2	3	4	1	2
6	7	8	5	6

5358C12

5357A8



5357A3

5357B1

131-570-001-0001
18.3503 AC

RES A2
920
120-436-002-0004
1.9190 AC

MEMORIAL HEIGHTS
120-436
RES B1