

5357A4

120-436-002-0005
4.1240 AC

120-436-001-0002
10.0900 AC

Harris County Appraisal District

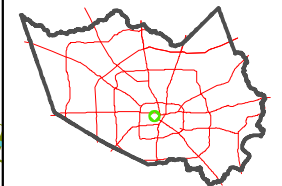


0 50 100 200 Feet

PUBLICATION DATE:
3/10/2020

Geospatial or map data maintained by the Harris County Appraisal District is for informational purposes and may not have been prepared for or be suitable for legal, engineering, or surveying purposes. It does not represent an on-the-ground survey and only represents the approximate location of property boundaries.

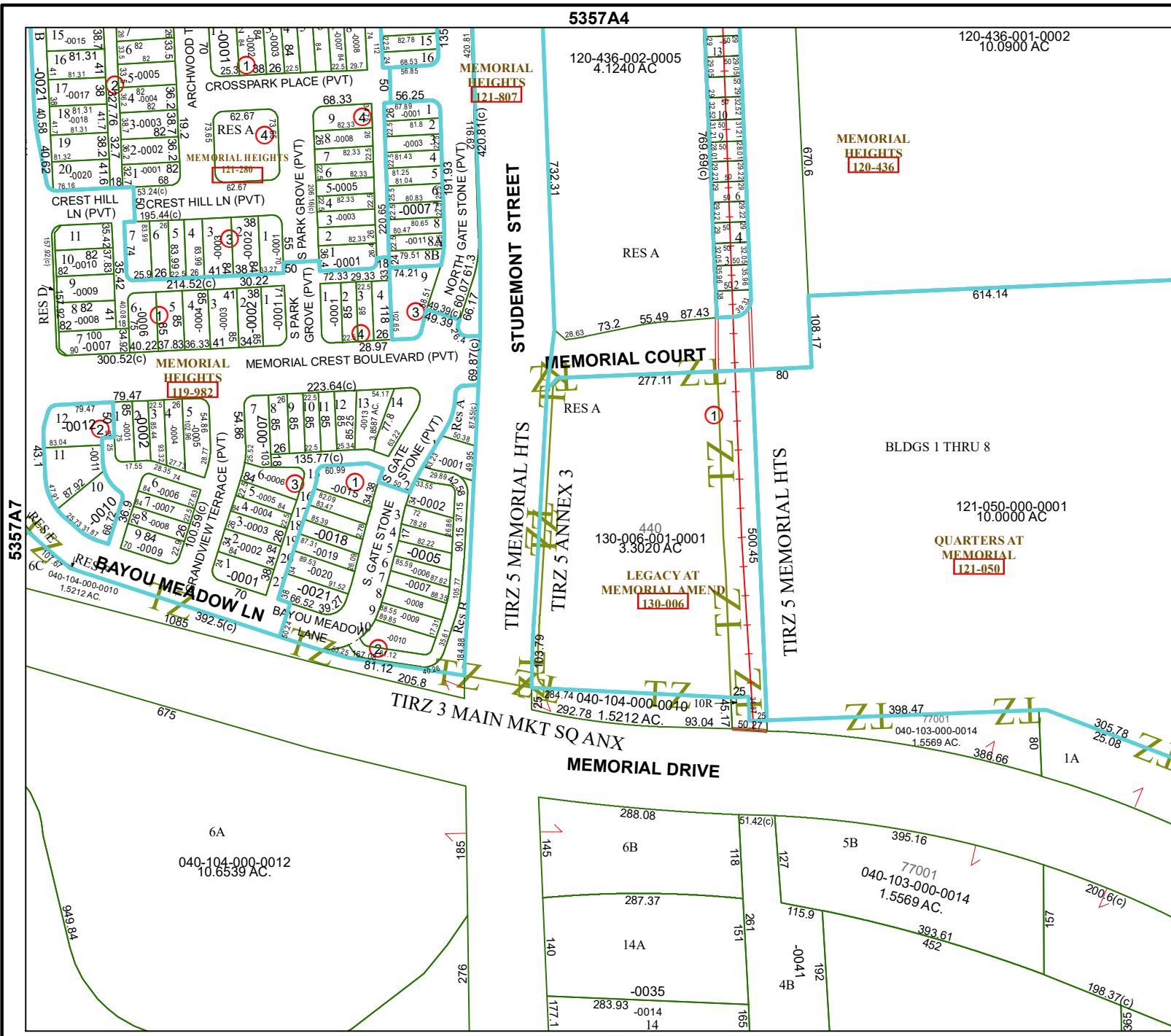
MAP LOCATION



FACET 5357A8

2	3	4	1	2
6	7	8	5	6
10	11	12	9	10

5357A12



5357B5