

Harris Central Appraisal District

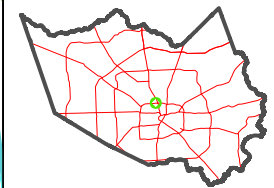


0 45 90 180 Feet

PUBLICATION DATE: 1/23/2024

Geospatial or map data maintained by the Harris Central Appraisal District is for informational purposes and may not have been prepared for or be suitable for legal, engineering, or surveying purposes. It does not represent an on-the-ground survey and only represents the approximate location of property boundaries.

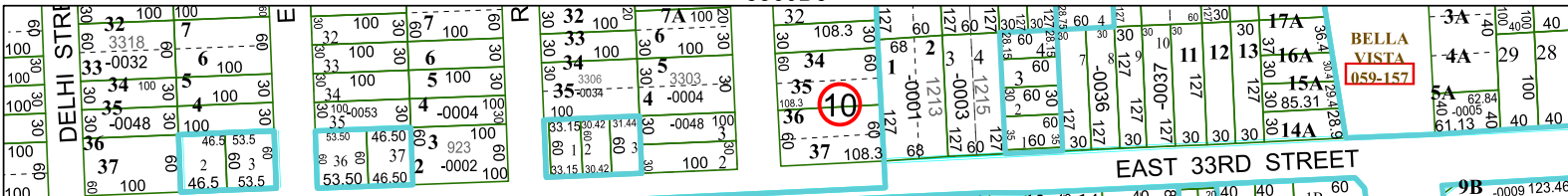
MAP LOCATION



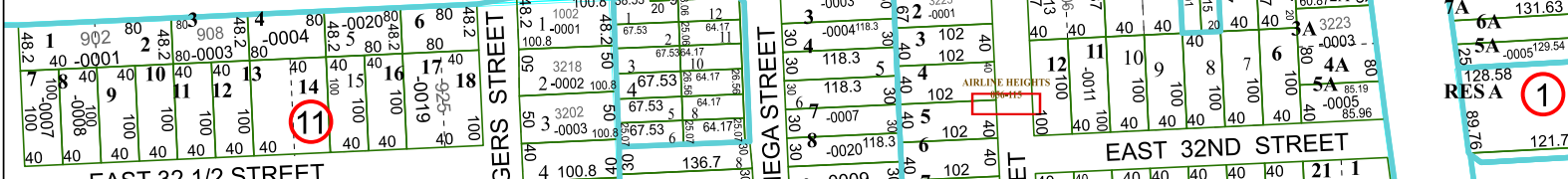
FACET 5359B1

11	12	9	10	11
3	4	1	2	3
7	8	5	6	7

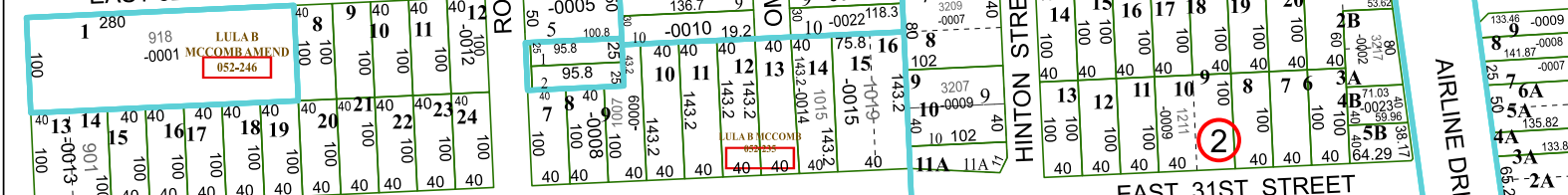
5360D9



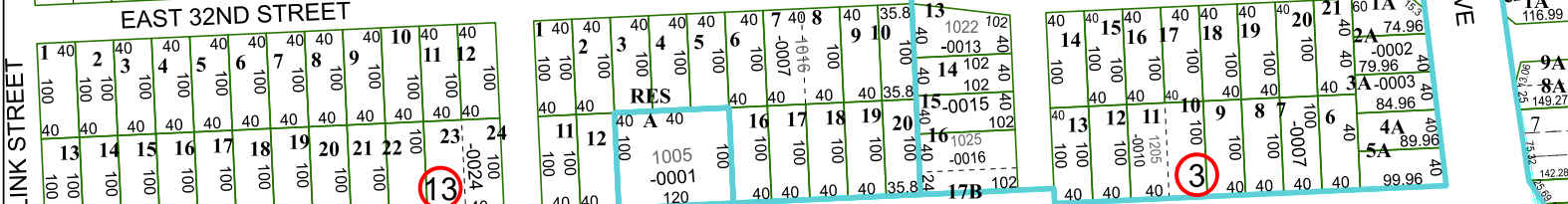
EAST 33RD STREET



EAST 32ND STREET

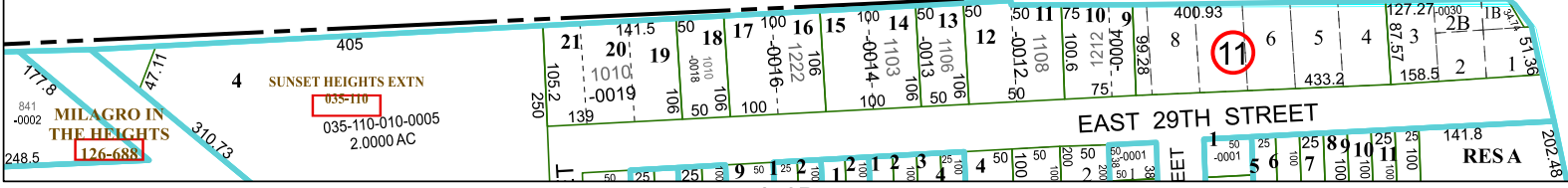


EAST 31ST STREET



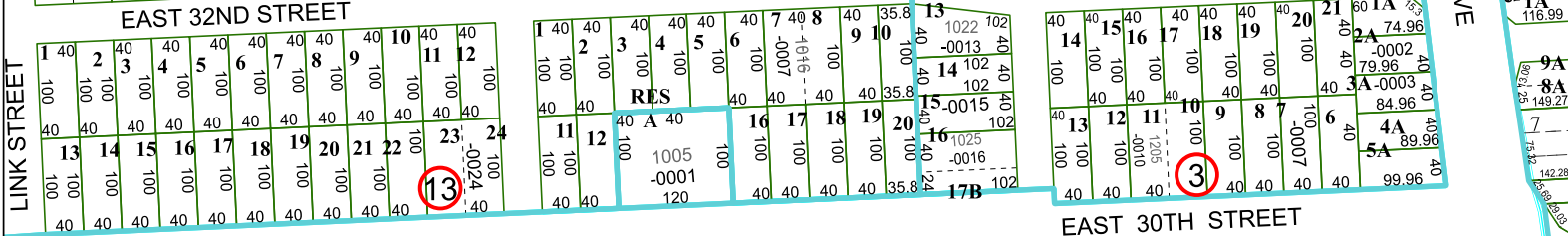
EAST 30TH STREET

5359B5

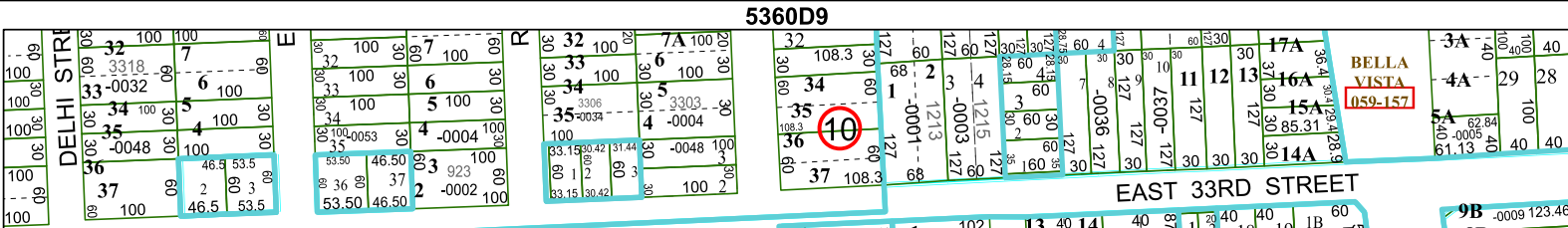


EAST 29TH STREET

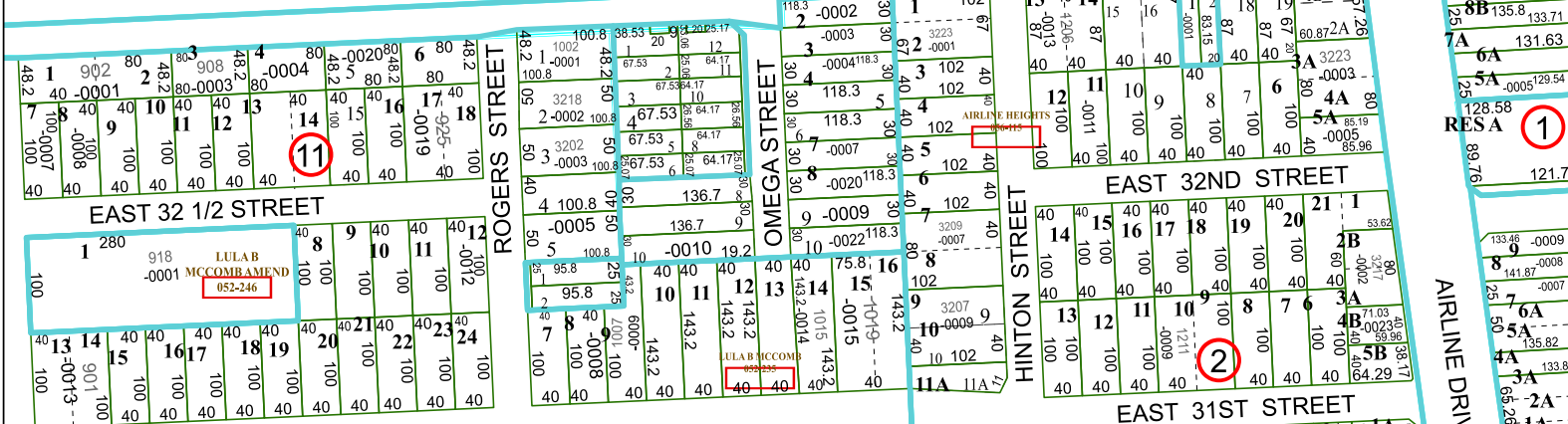
5359A4



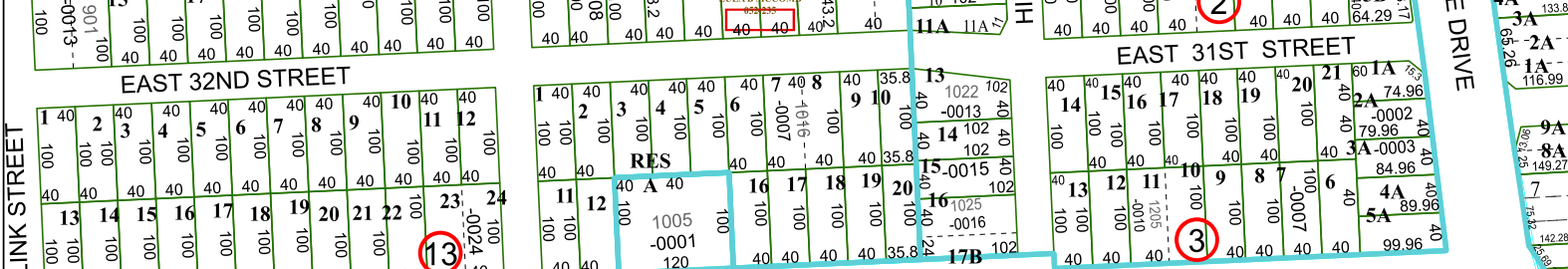
EAST 32ND STREET



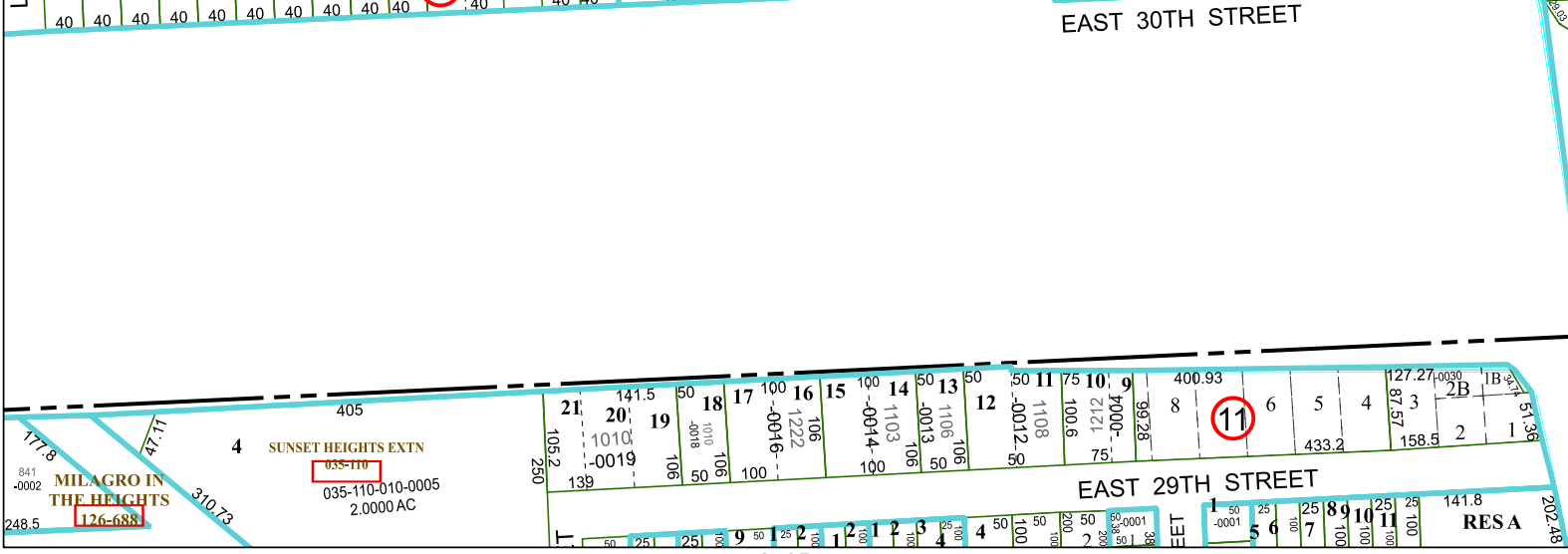
EAST 31ST STREET



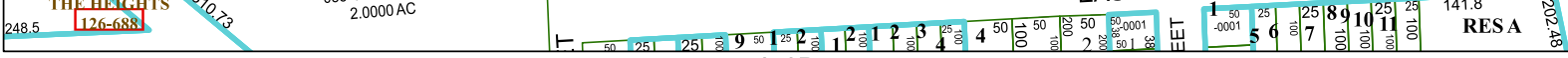
EAST 30TH STREET



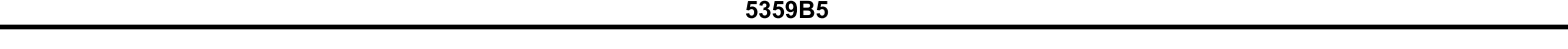
EAST 29TH STREET



EAST 28TH STREET



EAST 27TH STREET



EAST 26TH STREET



EAST 25TH STREET