

# Harris Central Appraisal District



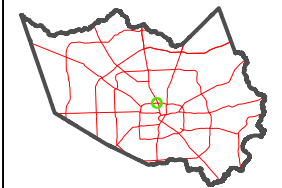
0 45 90 180 Feet

PUBLICATION DATE: 1/23/2024

Geospatial or map data maintained by the Harris Central Appraisal District is for informational purposes and may not have been prepared for or be suitable for legal, engineering, or surveying purposes. It does not represent an on-the-ground survey and only represents the approximate location of property boundaries.



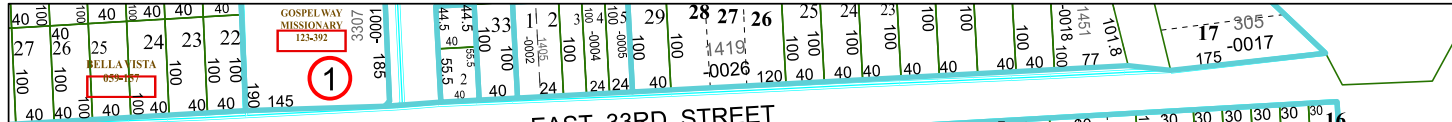
MAP LOCATION



## FACET 5359B2

12	9	10	11	12
4	1	2	3	4
8	5	6	7	8

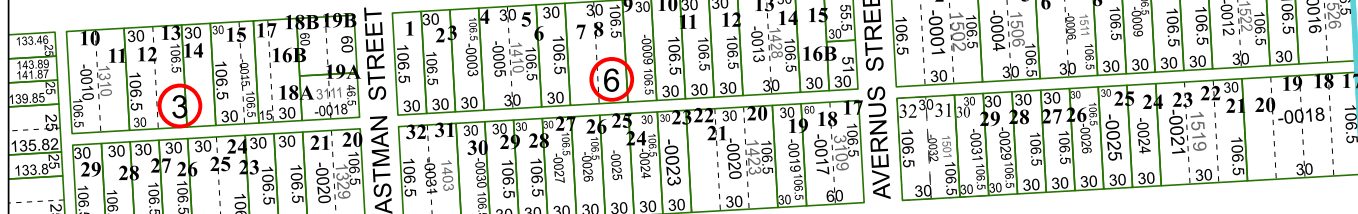
5360D10



EAST 33RD STREET



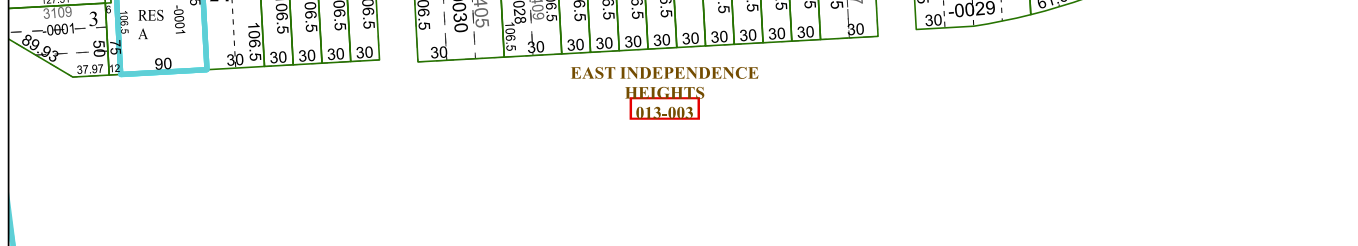
EAST 32 1/2 STREET



EASTMAN STREET

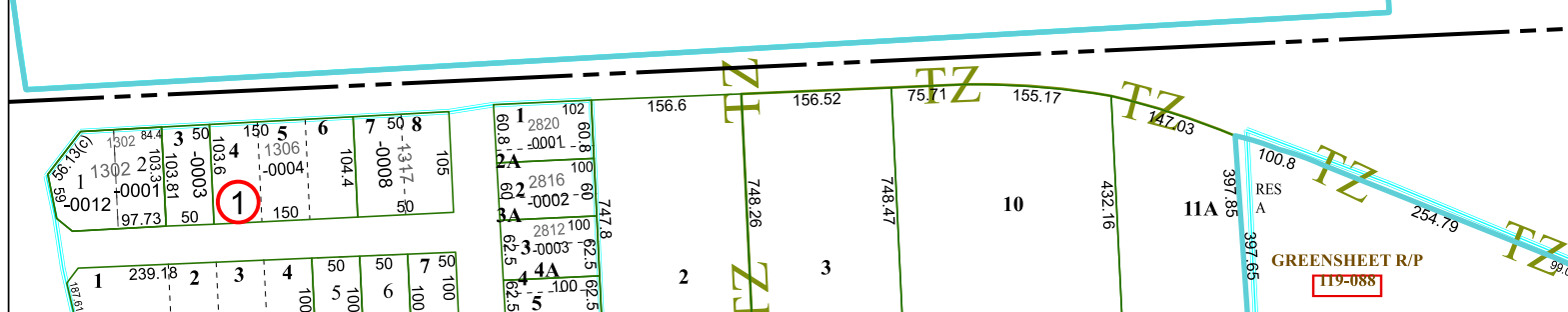


EAST 31ST STREET



EAST INDEPENDENCE HEIGHTS  
013-003

5359B6



GREENSHEET R/P  
119-088

5359B1

5359B3