

# Harris Central Appraisal District

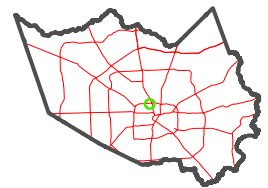


0 45 90 180 Feet

PUBLICATION DATE:  
5/21/2024

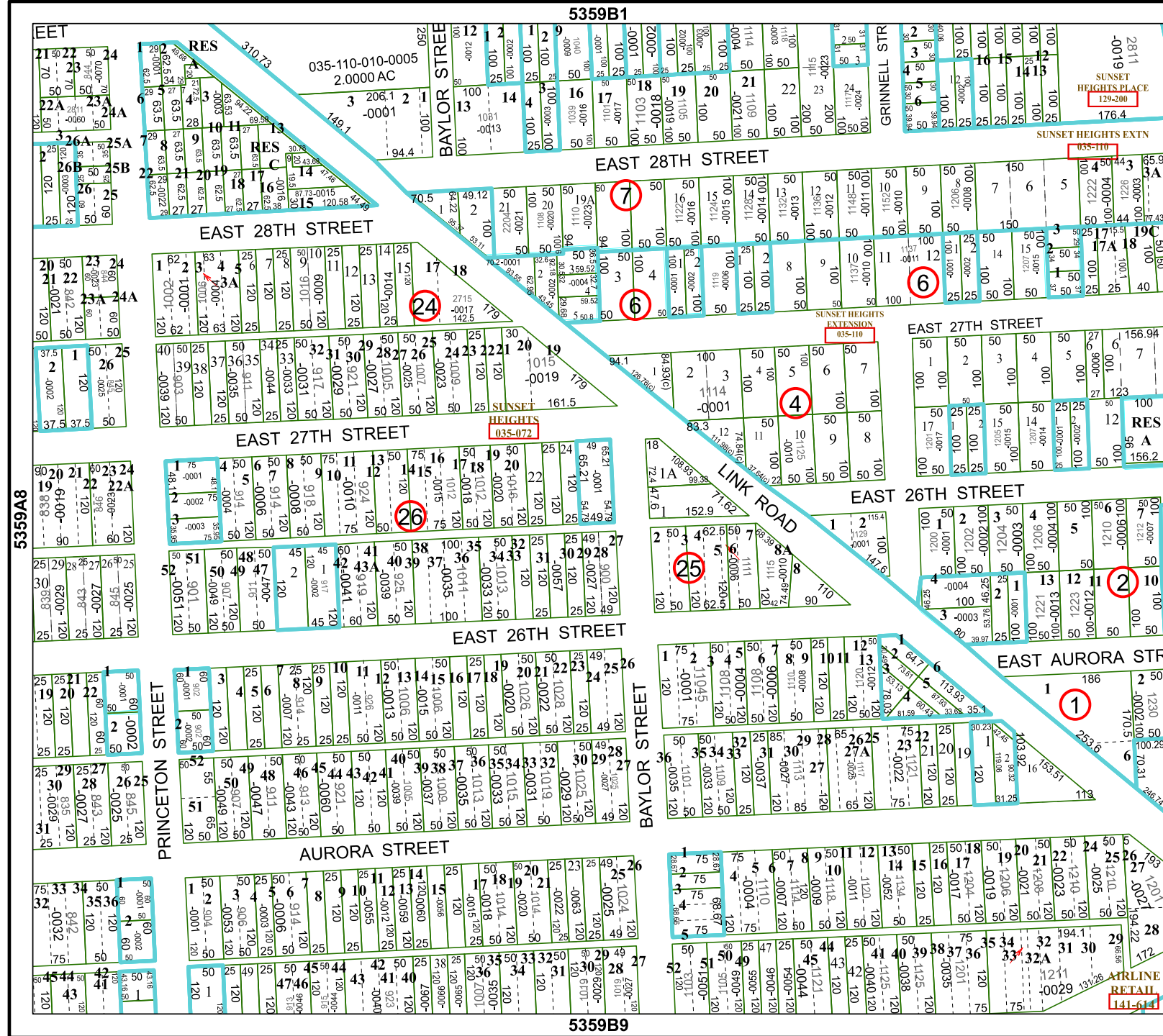
Geospatial or map data maintained by the Harris Central Appraisal District is for informational purposes and may not have been prepared for or be suitable for legal, engineering, or surveying purposes. It does not represent an on-the-ground survey and only represents the approximate location of property boundaries.

MAP LOCATION



## FACET 5359B5

3	4	1	2	3
7	8	5	6	7
11	12	9	10	11



5359B1

5359B9

5359A8

5359B6

5359B5