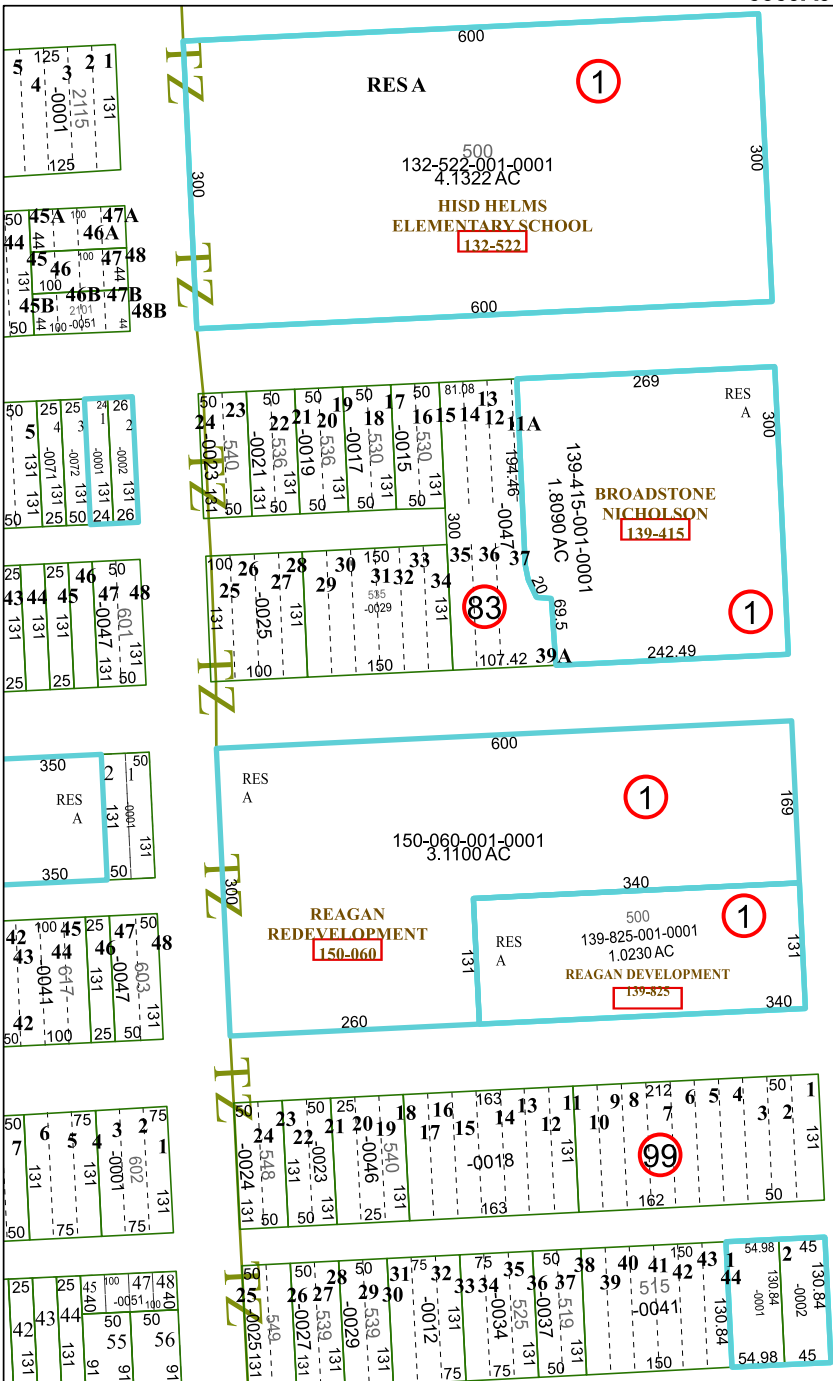
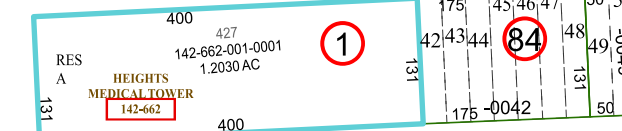
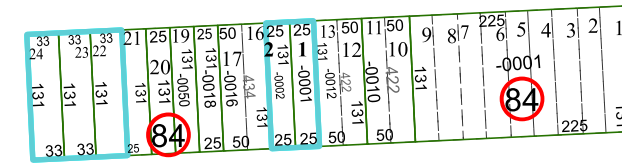
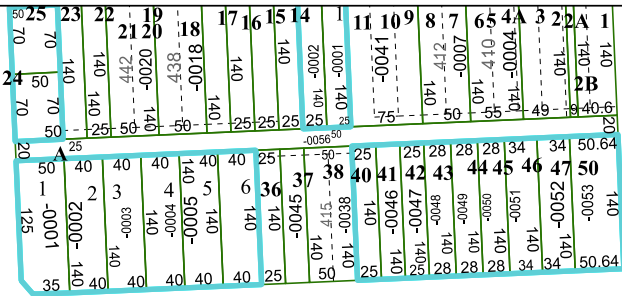


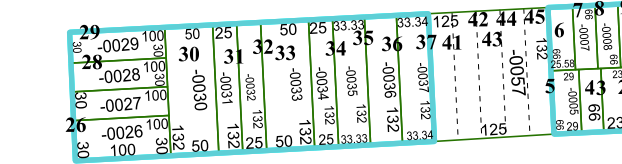
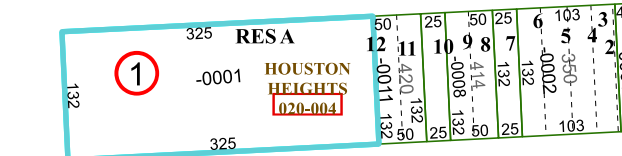
5359A9



5359C5



WEST 20TH STREET



Harris Central Appraisal District



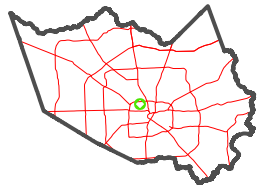
0 45 90 180 Feet

PUBLICATION DATE: 5/6/2024

Geospatial or map data maintained by the Harris Central Appraisal District is for informational purposes and may not have been prepared for or be suitable for legal, engineering, or surveying purposes. It does not represent an on-the-ground survey and only represents the approximate location of property boundaries.



MAP LOCATION



FACET 5359C1

11	12	9	10	11
3	4	1	2	3
7	8	5	6	7

5259D4

5359C2

5359C3

DAPHNE 147-051