

Harris Central Appraisal District

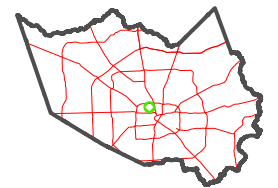


0 45 90 180 Feet

PUBLICATION DATE: 5/6/2024

Geospatial or map data maintained by the Harris Central Appraisal District is for informational purposes and may not have been prepared for or be suitable for legal, engineering, or surveying purposes. It does not represent an on-the-ground survey and only represents the approximate location of property boundaries.

MAP LOCATION



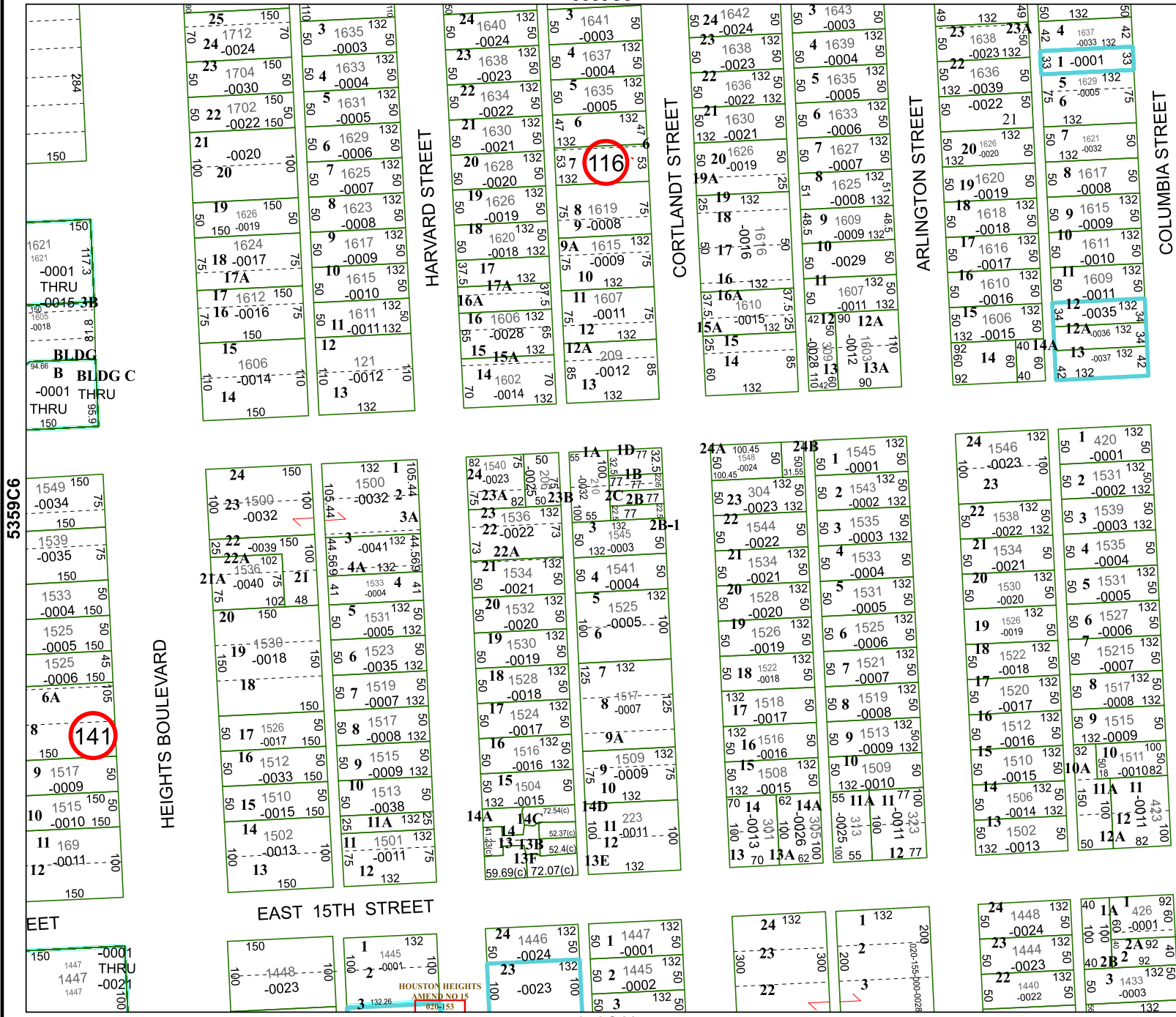
FACET 5359C7

1	2	3	4	1
5	6	7	8	5
9	10	11	12	9

5359C3

116

5359C11



HEIGHTS BOULEVARD

EAST 15TH STREET

HARVARD STREET

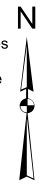
CORTLAND STREET

ARLINGTON STREET

COLUMBIA STREET

5359C6

5359C8



EET

HOUSTON HEIGHTS AMEND NO.15 132.28 020-153

200 150-155-p00c-0028