

Harris Central Appraisal District

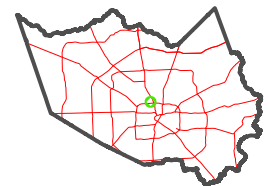


0 45 90 180 Feet

PUBLICATION DATE: 5/21/2024

Geospatial or map data maintained by the Harris Central Appraisal District is for informational purposes and may not be suitable for legal, engineering, or surveying purposes. It does not represent an on-the-ground survey and only represents the approximate location of property boundaries.

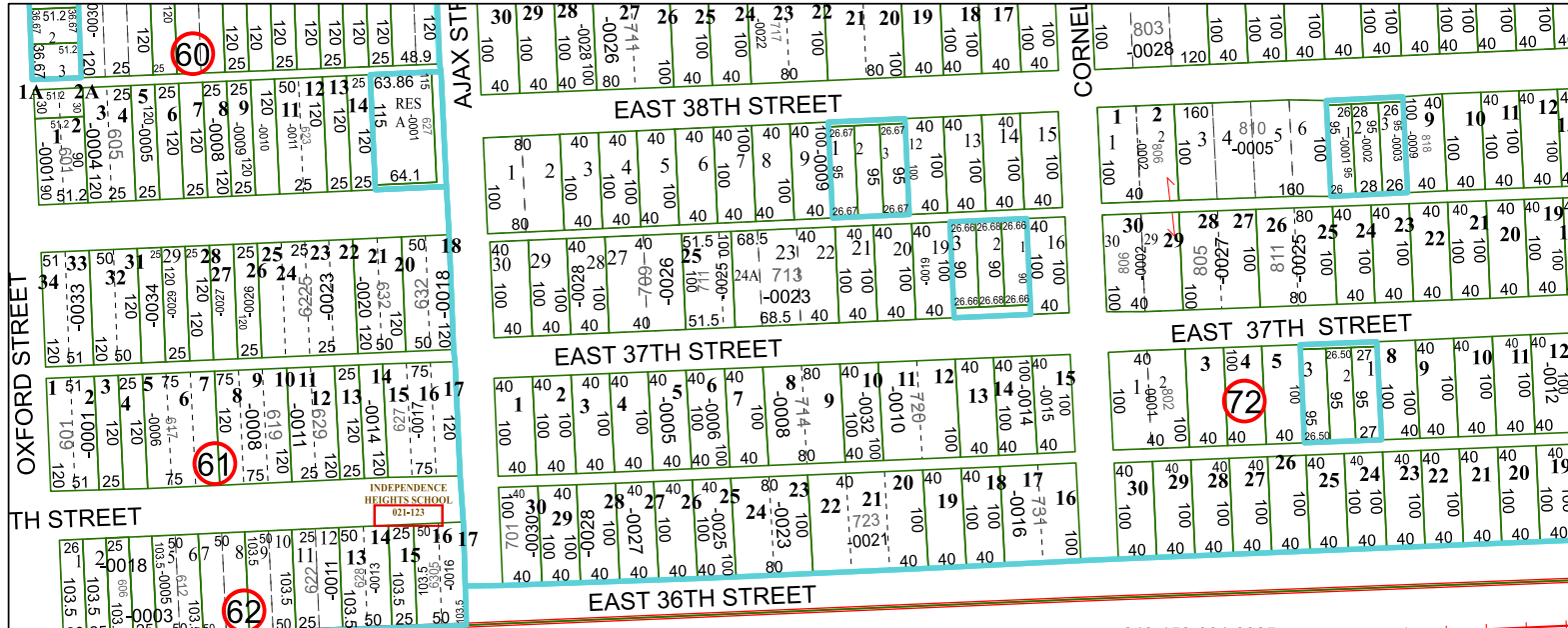
MAP LOCATION



FACET 5360C12

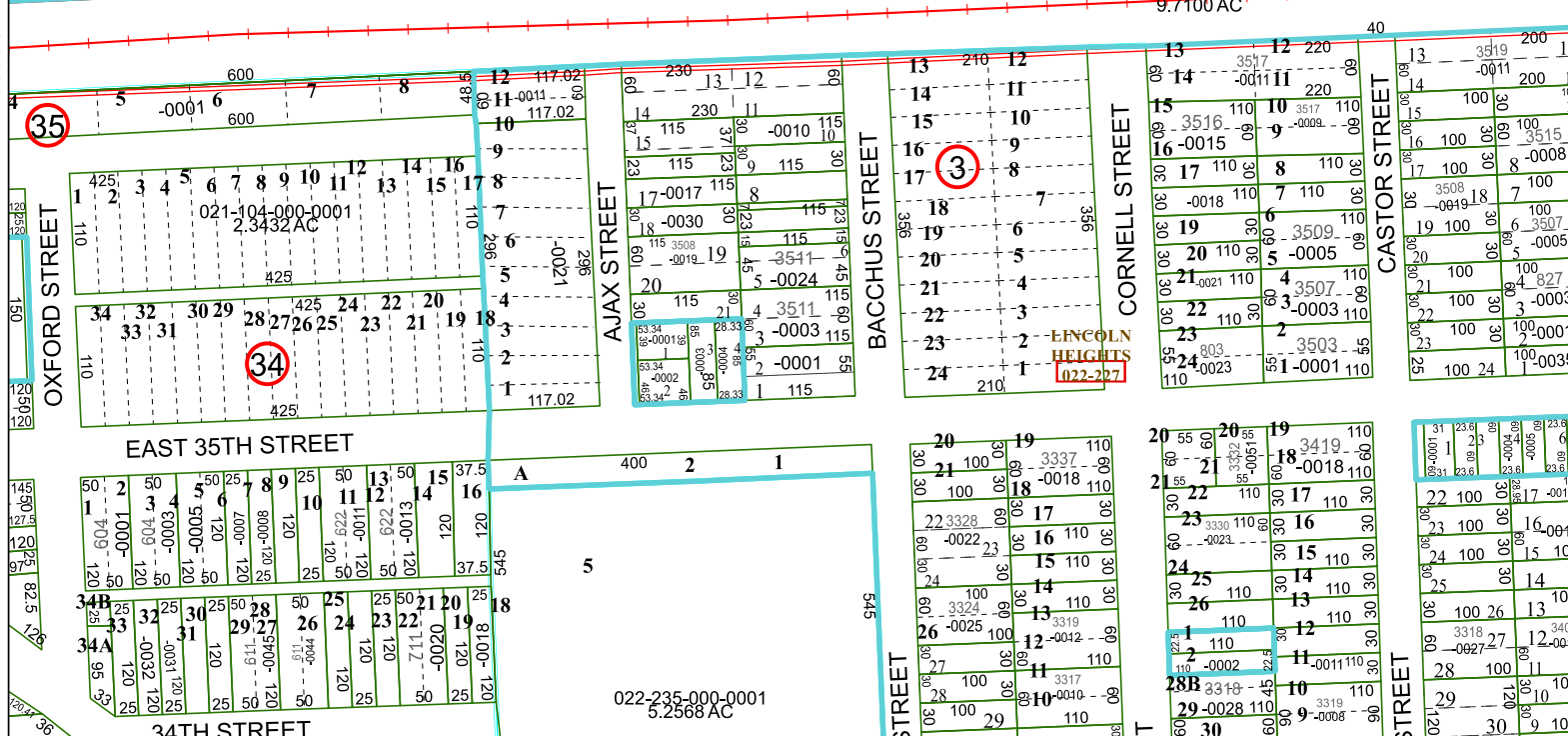
6	7	8	5	6
10	11	12	9	10
2	3	4	1	2

5360C8



043-159-004-0325
9.7100 AC

5360C11



022-235-000-0001
5.2568 AC

5359A4