

# Harris Central Appraisal District



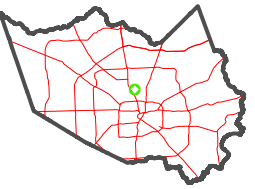
0 45 90 180  
Feet

PUBLICATION DATE:  
3/25/2024

Geospatial or map data maintained by the Harris Central Appraisal District is for informational purposes and may not have been prepared for or be suitable for legal, engineering, or surveying purposes. It does not represent an on-the-ground survey and only represents the approximate location of property boundaries.

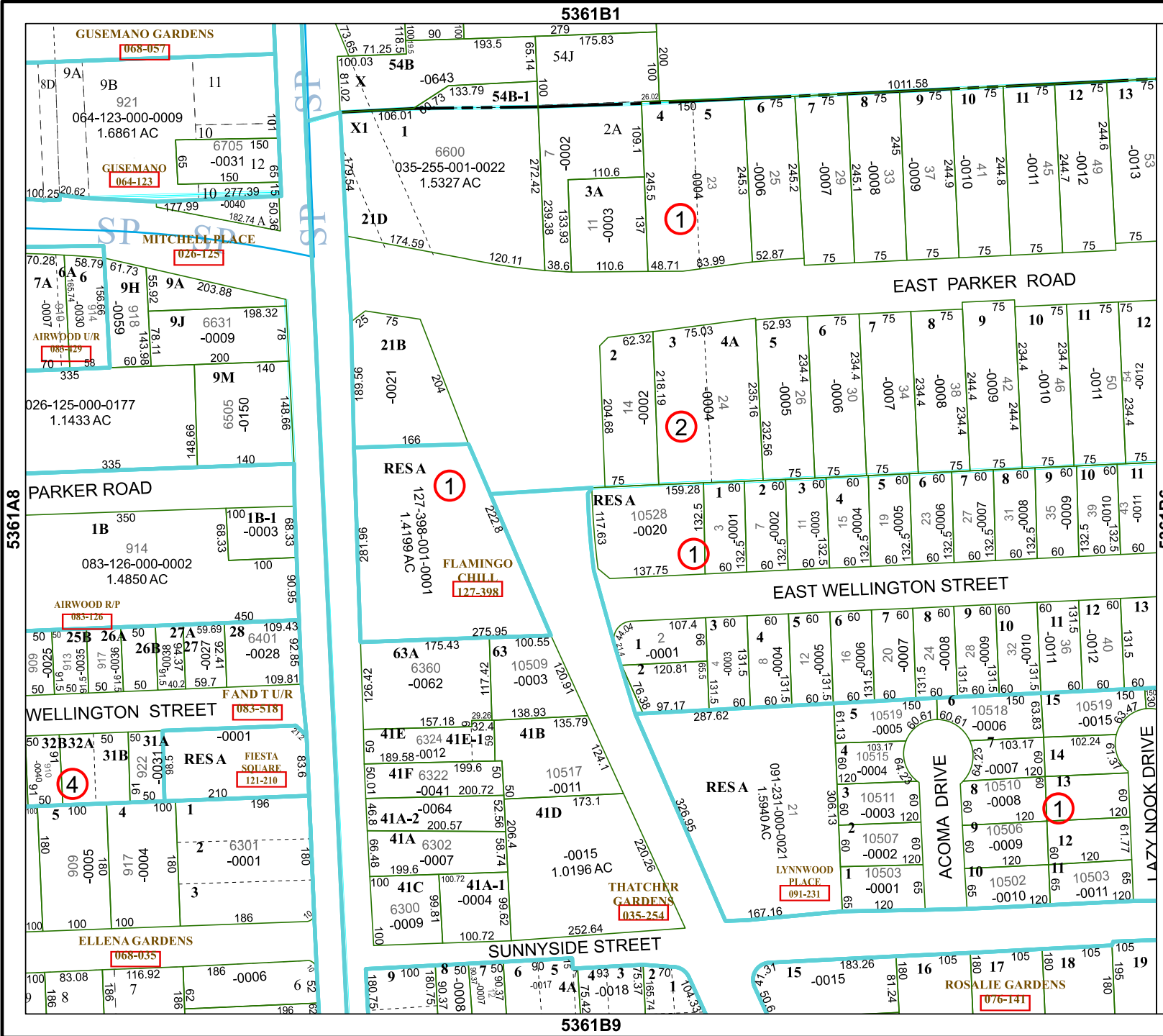


MAP LOCATION



# FACET 5361B5

3	4	1	2	3
7	8	5	6	7
11	12	9	10	11



5361A8

5361B1

5361B6

5361B9