

5361C5

5360A1

# Harris Central Appraisal District

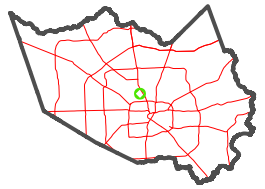


0 45 90 180 Feet

PUBLICATION DATE: 5/30/2024

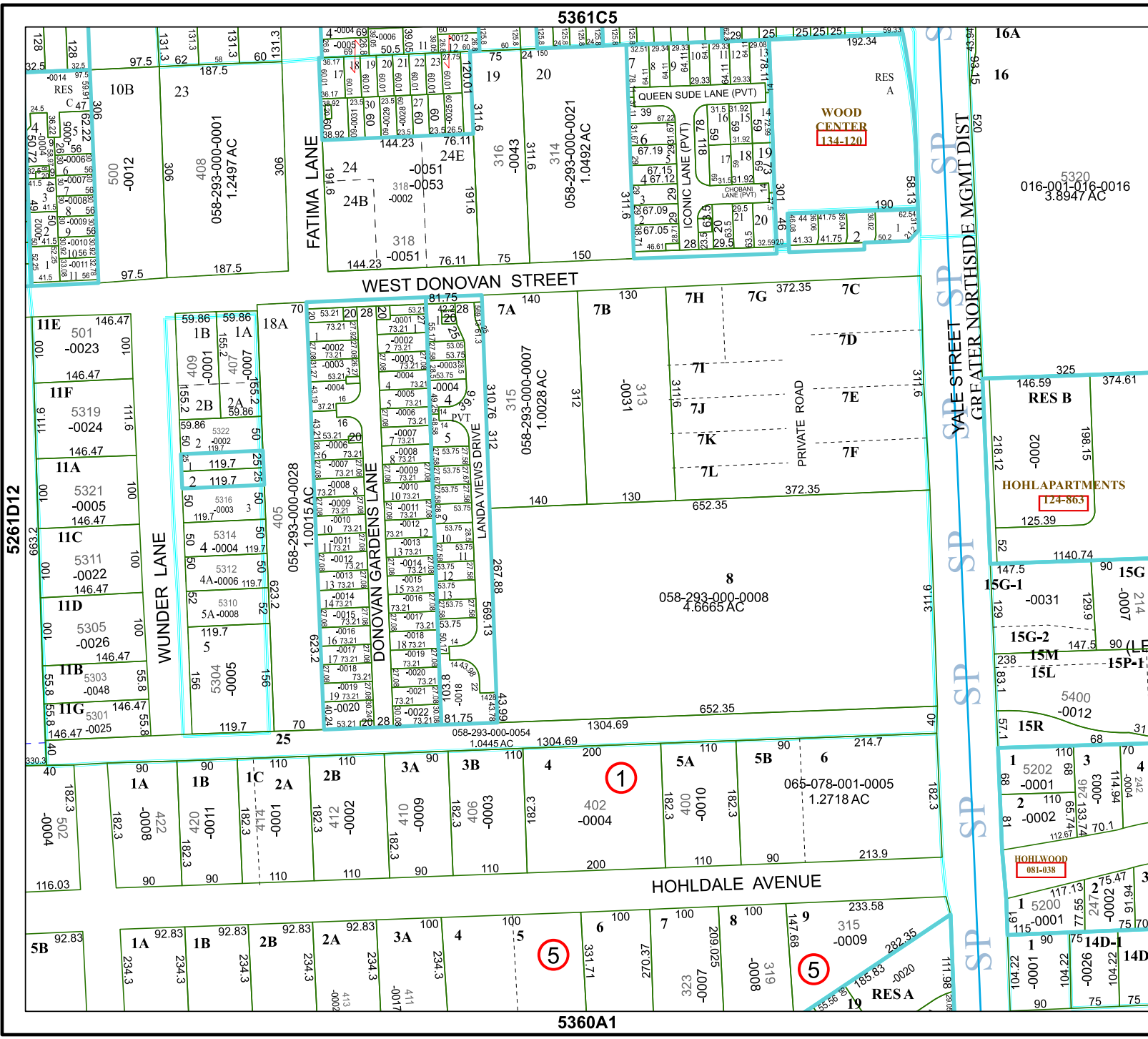
Geospatial or map data maintained by the Harris Central Appraisal District is for informational purposes and may not have been prepared for or be suitable for legal, engineering, or surveying purposes. It does not represent an on-the-ground survey and only represents the approximate location of property boundaries.

MAP LOCATION



# FACET 5361C9

7	8	5	6	7
11	12	9	10	11
3	4	1	2	3



5320  
016-001-016-0016  
3.8947 AC

5261D12

5361C9

