

Harris Central Appraisal District

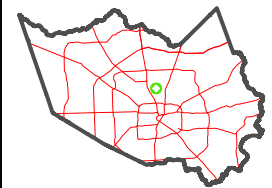


0 45 90 180 Feet

PUBLICATION DATE:
5/21/2024

Geospatial or map data maintained by the Harris Central Appraisal District is for informational purposes and may not have been prepared for or be suitable for legal, engineering, or surveying purposes. It does not represent an on-the-ground survey and only represents the approximate location of property boundaries.

MAP LOCATION

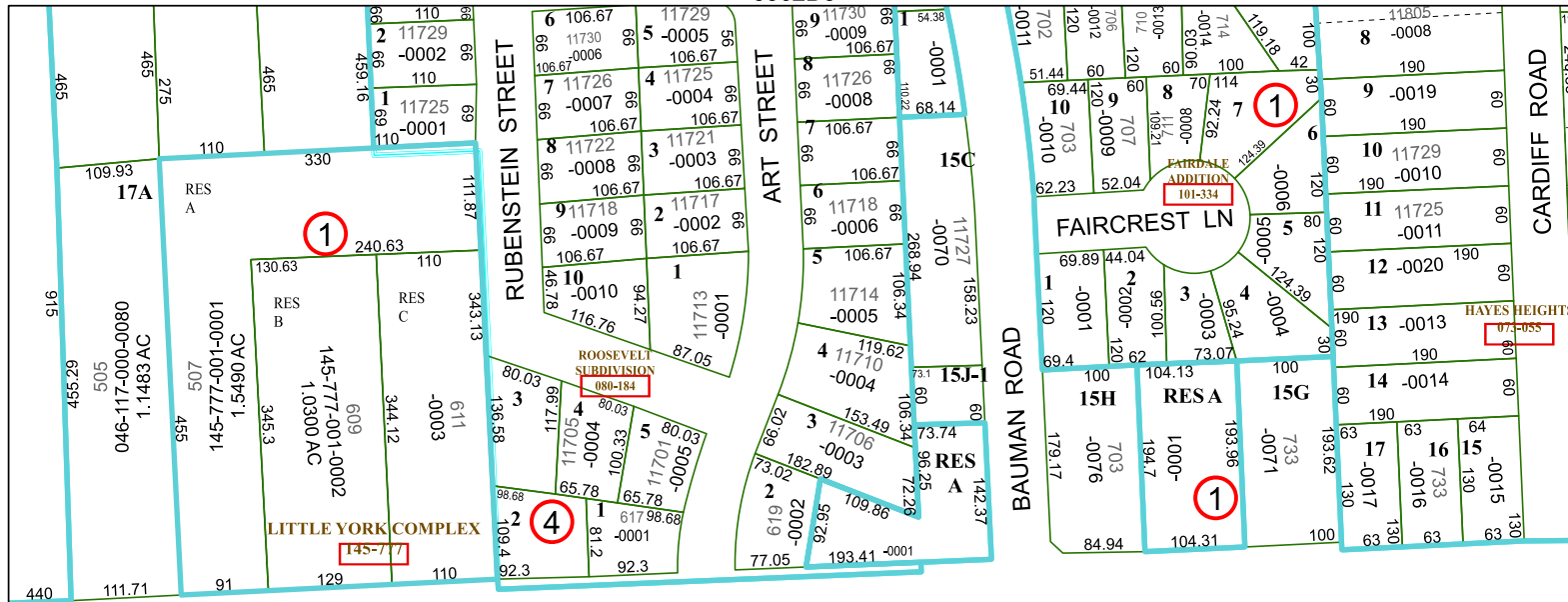


FACET

5362D7

1	2	3	4	1
5	6	7	8	5
9	10	11	12	9

5362D3



5362D11



5362D6

5362D3

5362D11