

# Harris Central Appraisal District

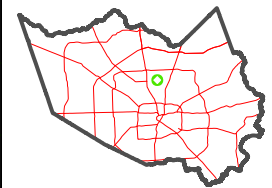


0 45 90 180 Feet

PUBLICATION DATE: 4/22/2024

Geospatial or map data maintained by the Harris Central Appraisal District is for informational purposes and may not have been prepared for or be suitable for legal, engineering, or surveying purposes. It does not represent an on-the-ground survey and only represents the approximate location of property boundaries.

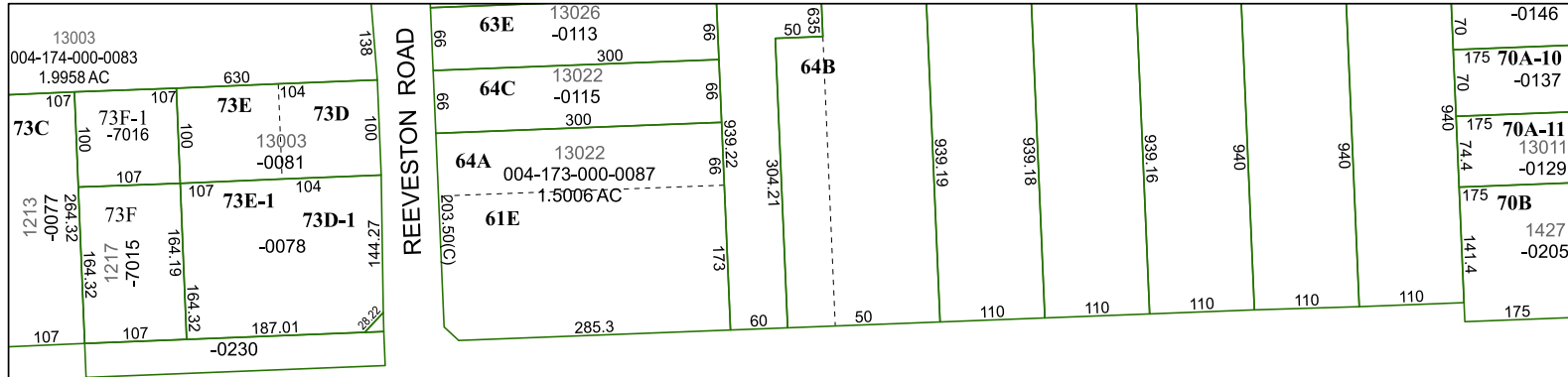
MAP LOCATION



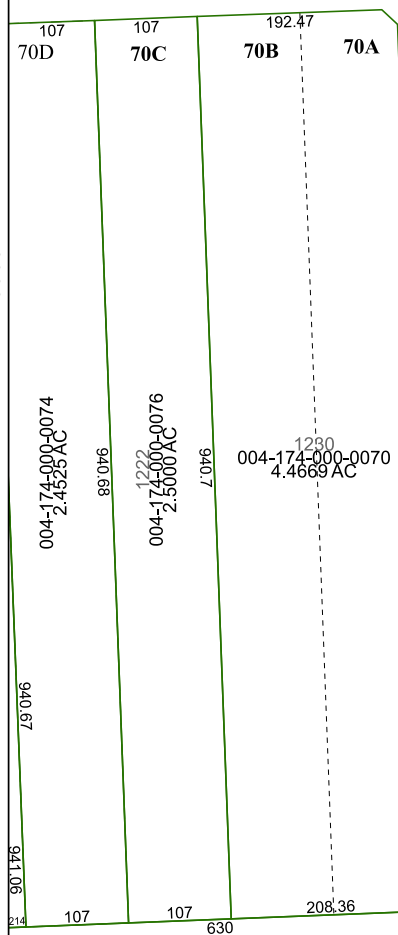
## FACET 5363B12

6	7	8	5	6
10	11	12	9	10
2	3	4	1	2

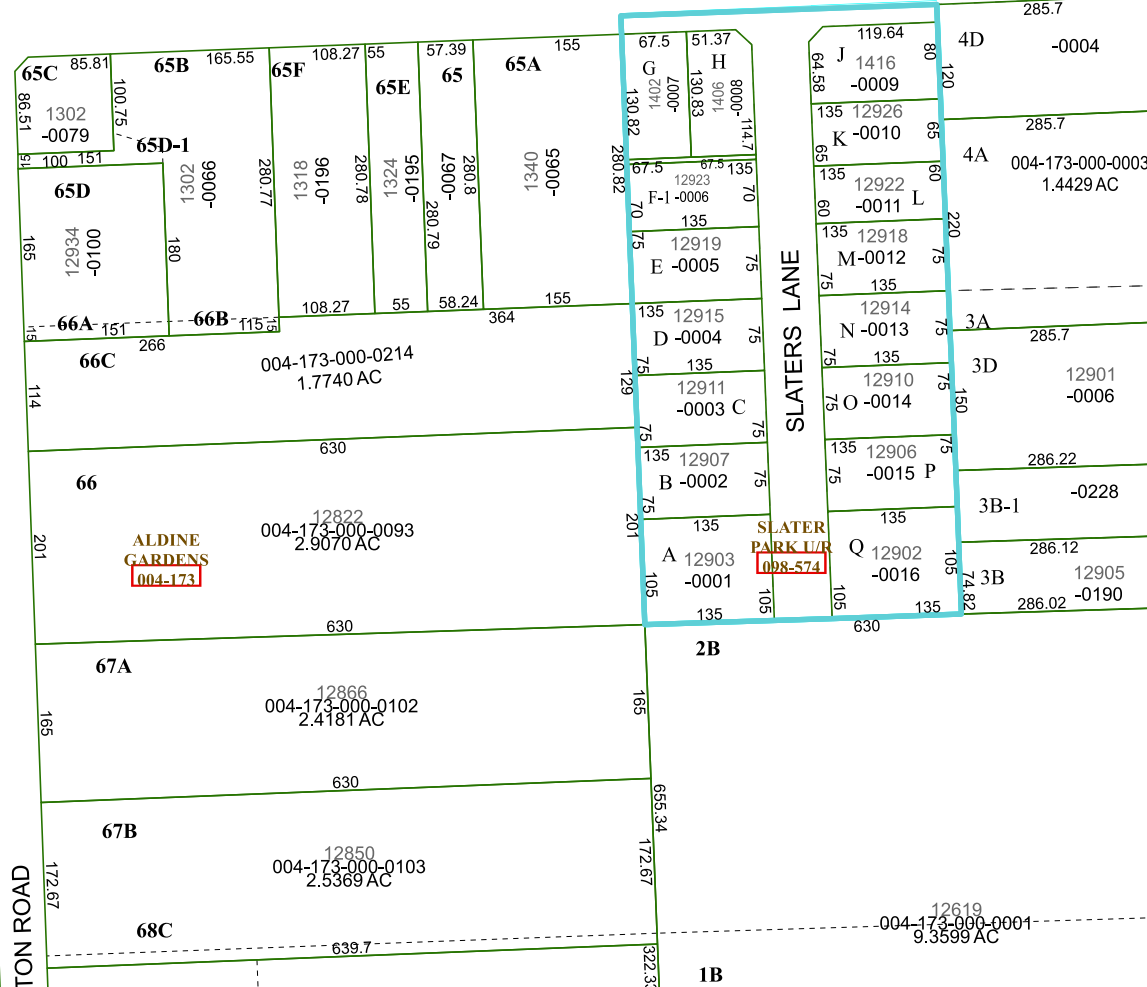
5363B8



MAIL ROUTE ROAD



5363D4



5463A

5463A

5463A

5463A

5463A