

Harris Central Appraisal District



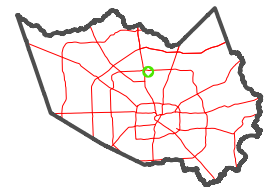
0 45 90 180 Feet

PUBLICATION DATE:
5/22/2023

Geospatial or map data maintained by the Harris Central Appraisal District is for informational purposes and may not have been prepared for or be suitable for legal, engineering, or surveying purposes. It does not represent an on-the-ground survey and only represents the approximate location of property boundaries.



MAP LOCATION



FACET 5364A2

12	9	10	11	12
4	1	2	3	4
8	5	6	7	8

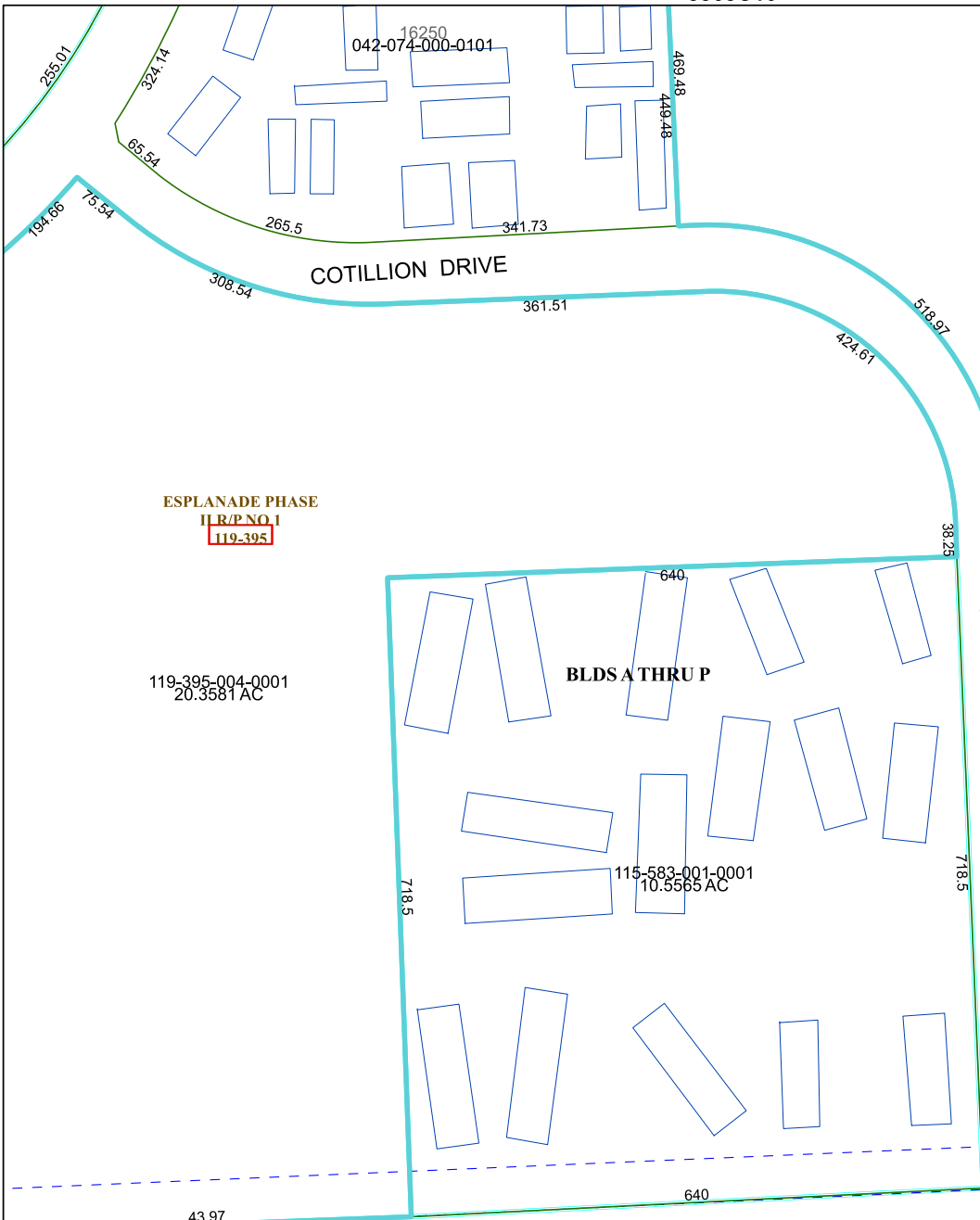
5365C10

5364A3

5364A1

5364A3

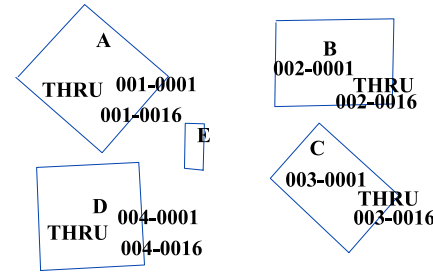
5364A6



127-885-001-0001
17.1300 AC
ALDINE I S D AT
COTILLION DR
127-885

ESPLANADE PHASE
I.R.P. NO. 1
119-395

BLDS A THRU P



NORTH HOUSTON DIST T

ALDINE BENDER