

Harris Central Appraisal District

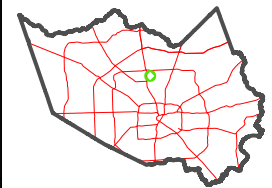


0 45 90 180 Feet

PUBLICATION DATE:
1/10/2025

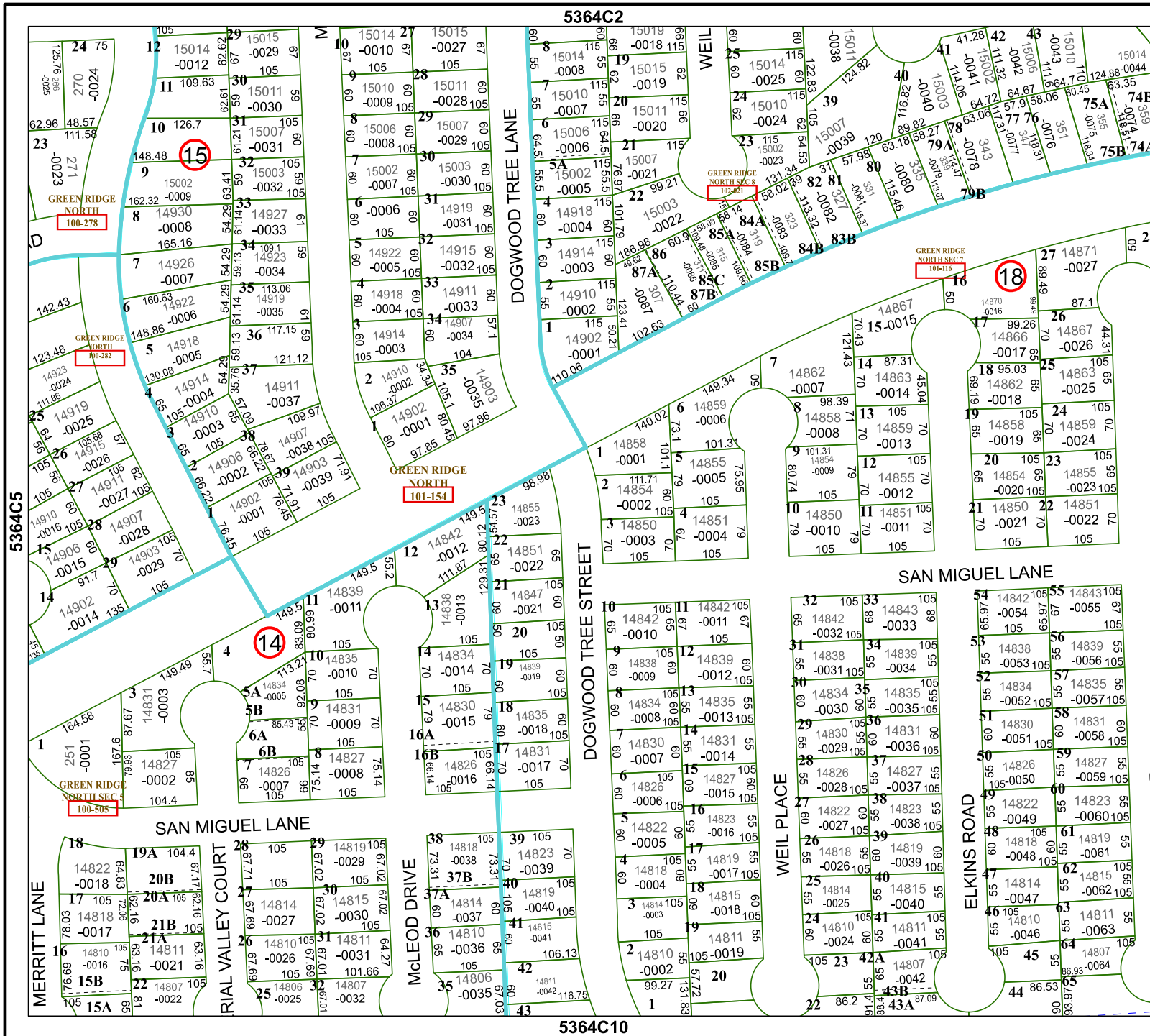
Geospatial or map data maintained by the Harris Central Appraisal District is for informational purposes and may not have been prepared for or be suitable for legal, engineering, or surveying purposes. It does not represent an on-the-ground survey and only represents the approximate location of property boundaries.

MAP LOCATION



FACET 5364C6

4	1	2	3	4
8	5	6	7	8
12	9	10	11	12



5364C10

5364C7

5364C6

5364C2

5364C1