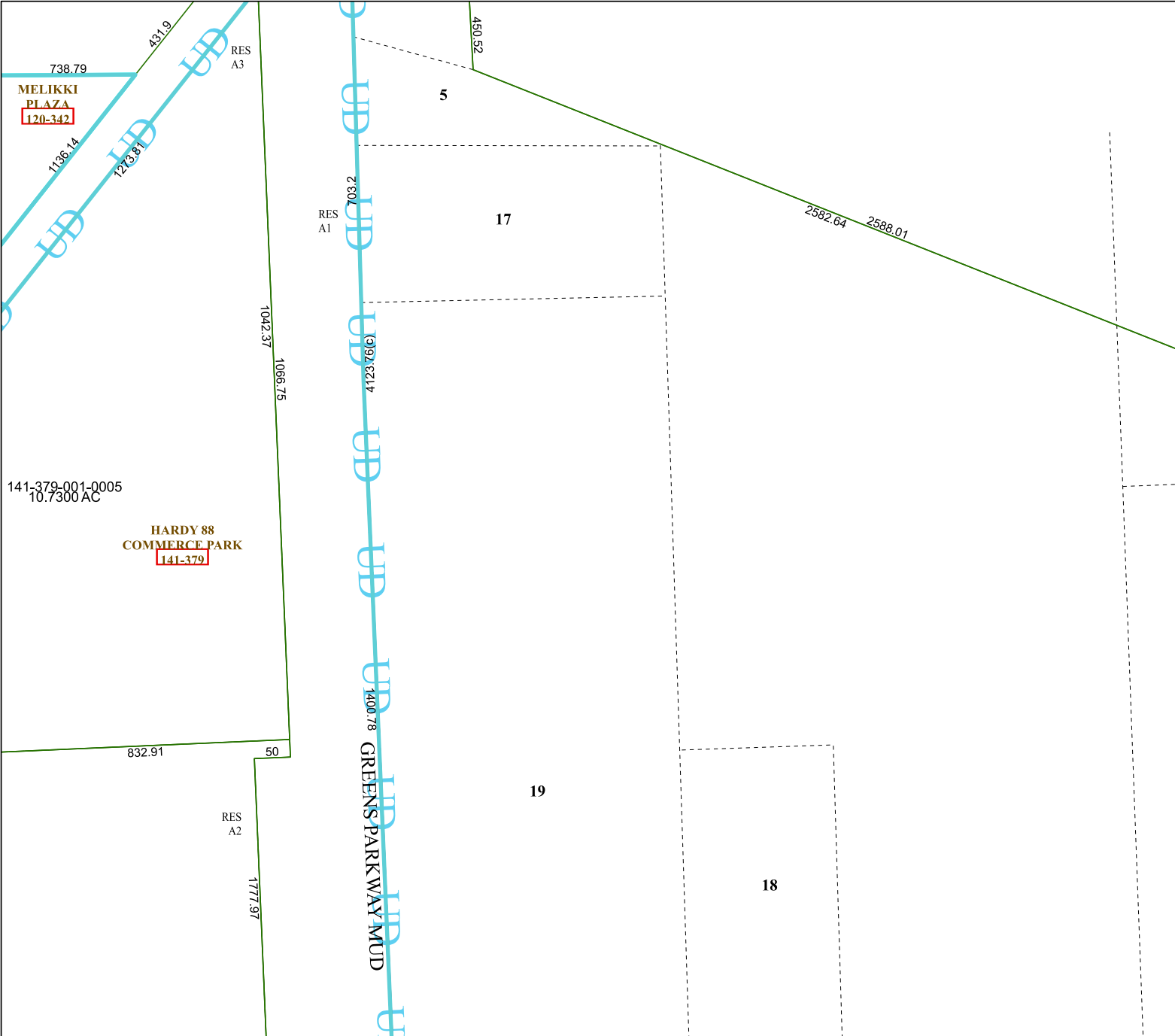
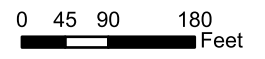


5367C12



5366A3

Harris Central Appraisal District

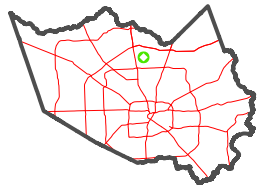


PUBLICATION DATE:
12/30/2023

Geospatial or map data maintained by the Harris Central Appraisal District is for informational purposes and may **not** have been prepared for or be suitable for legal, engineering, or surveying purposes. It does **not** represent an on-the-ground survey and only represents the approximate location of property boundaries.



MAP LOCATION



FACET 5366A4

10	11	12	9	10
2	3	4	1	2
6	7	8	5	6

5366A8