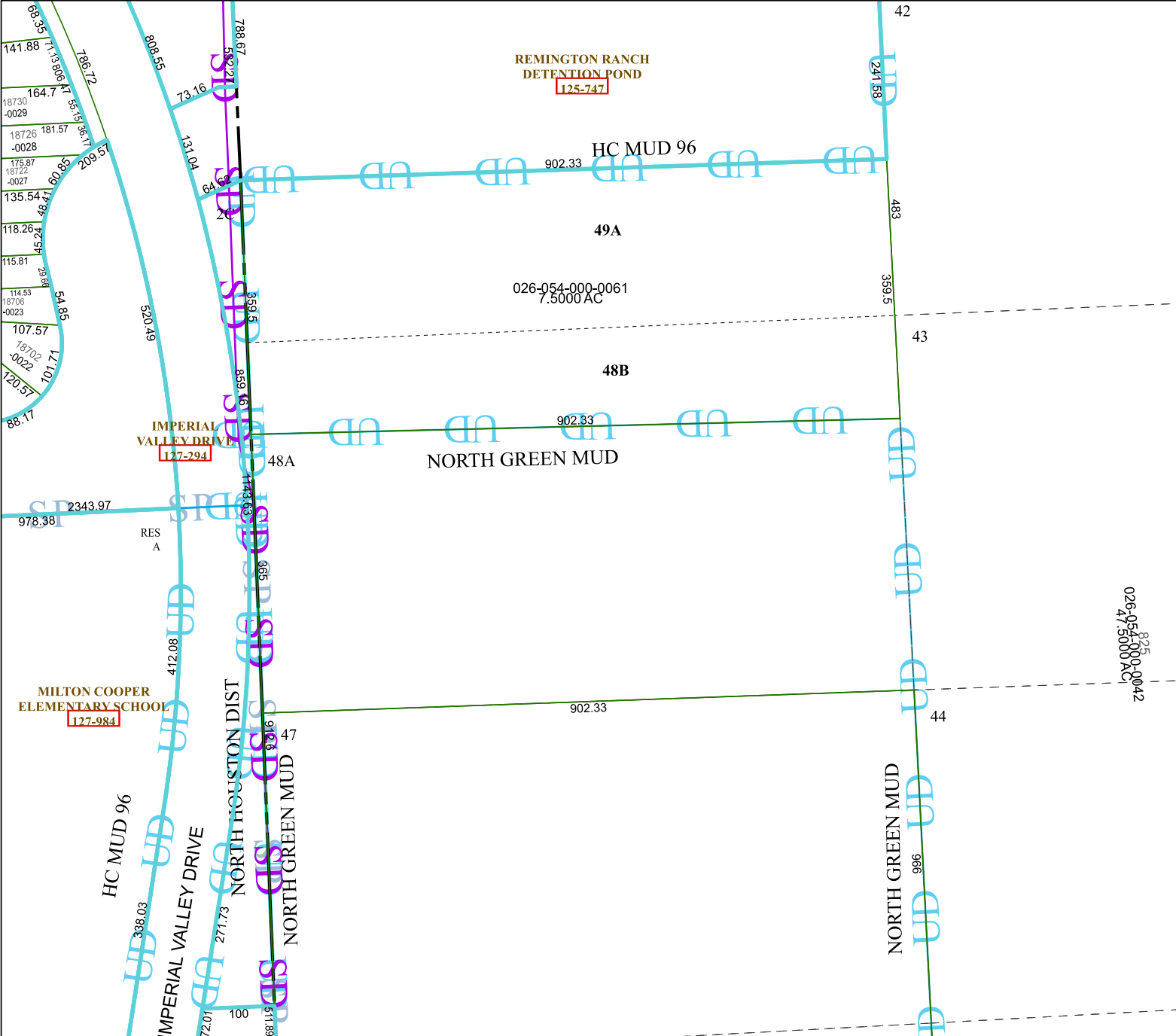


5366A9



5366C5

Harris Central Appraisal District

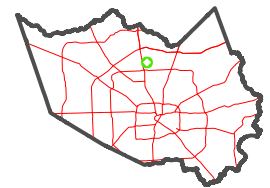


0 45 90 180
Feet

PUBLICATION DATE:
12/30/2023

Geospatial or map data maintained by the Harris Central Appraisal District is for informational purposes and may not have been prepared for or be suitable for legal, engineering, or surveying purposes. It does not represent an on-the-ground survey and only represents the approximate location of property boundaries.

MAP LOCATION



FACET 5366C1

11	12	9	10	11
3	4	1	2	3
7	8	5	6	7

5266D4

5366C2

026-054-000-0042
47.5000 AC

