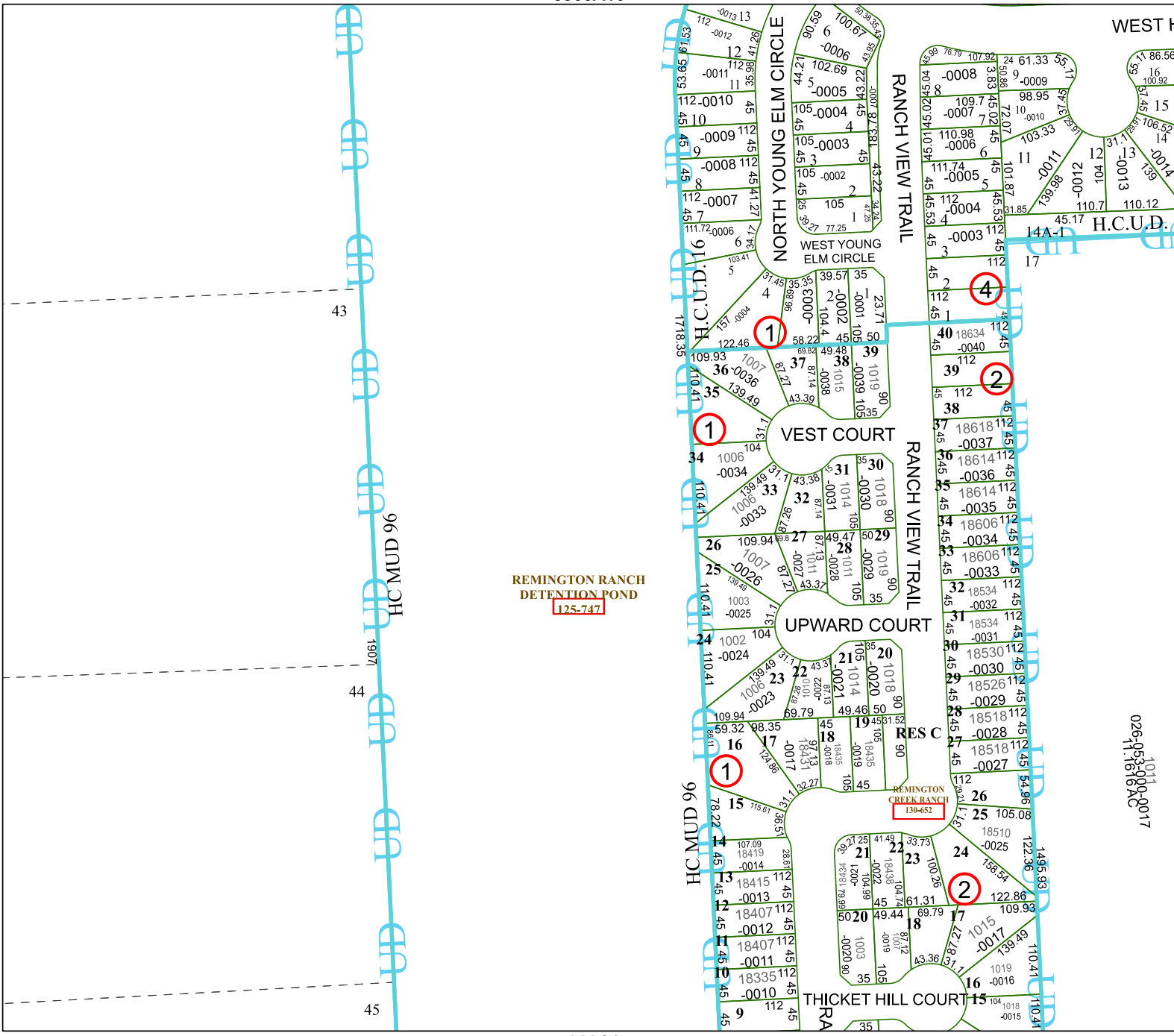


5366A10

5366C1

5366C6



# Harris Central Appraisal District



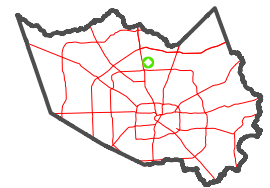
0 45 90 180 Feet

PUBLICATION DATE:  
12/30/2023

Geospatial or map data maintained by the Harris Central Appraisal District is for informational purposes and may not have been prepared for or be suitable for legal, engineering, or surveying purposes. It does not represent an on-the-ground survey and only represents the approximate location of property boundaries.



MAP LOCATION



## FACET 5366C2

12	9	10	11	12
4	1	2	3	4
8	5	6	7	8

026-053-000-0017  
1011  
1616AC

5366C3