

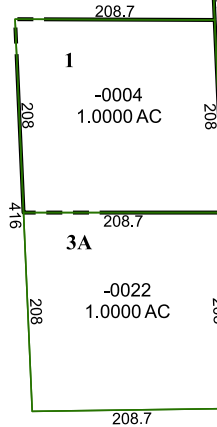
5367B4

3071.7

432.79
1102

3071.19

3



5367B7

99999
047-195-000-0009
118.1400 AC

2306.28
1120

5367B12

Harris Central Appraisal District



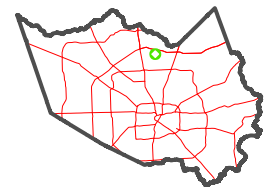
0 45 90 180 Feet

PUBLICATION DATE:
1/6/2023

Geospatial or map data maintained by the Harris Central Appraisal District is for informational purposes and may **not** have been prepared for or be suitable for legal, engineering, or surveying purposes. It does **not** represent an on-the-ground survey and only represents the approximate location of property boundaries.



MAP LOCATION



FACET

5367B8

2	3	4	1	2
6	7	8	5	6
10	11	12	9	10

5467A5