

Harris Central Appraisal District



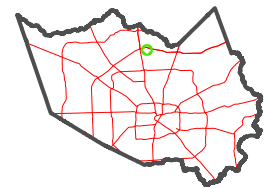
0 45 90 180 Feet

PUBLICATION DATE:
1/6/2023

Geospatial or map data maintained by the Harris Central Appraisal District is for informational purposes and may not have been prepared for or be suitable for legal, engineering, or surveying purposes. It does not represent an on-the-ground survey and only represents the approximate location of property boundaries.



MAP LOCATION



FACET 5368C1

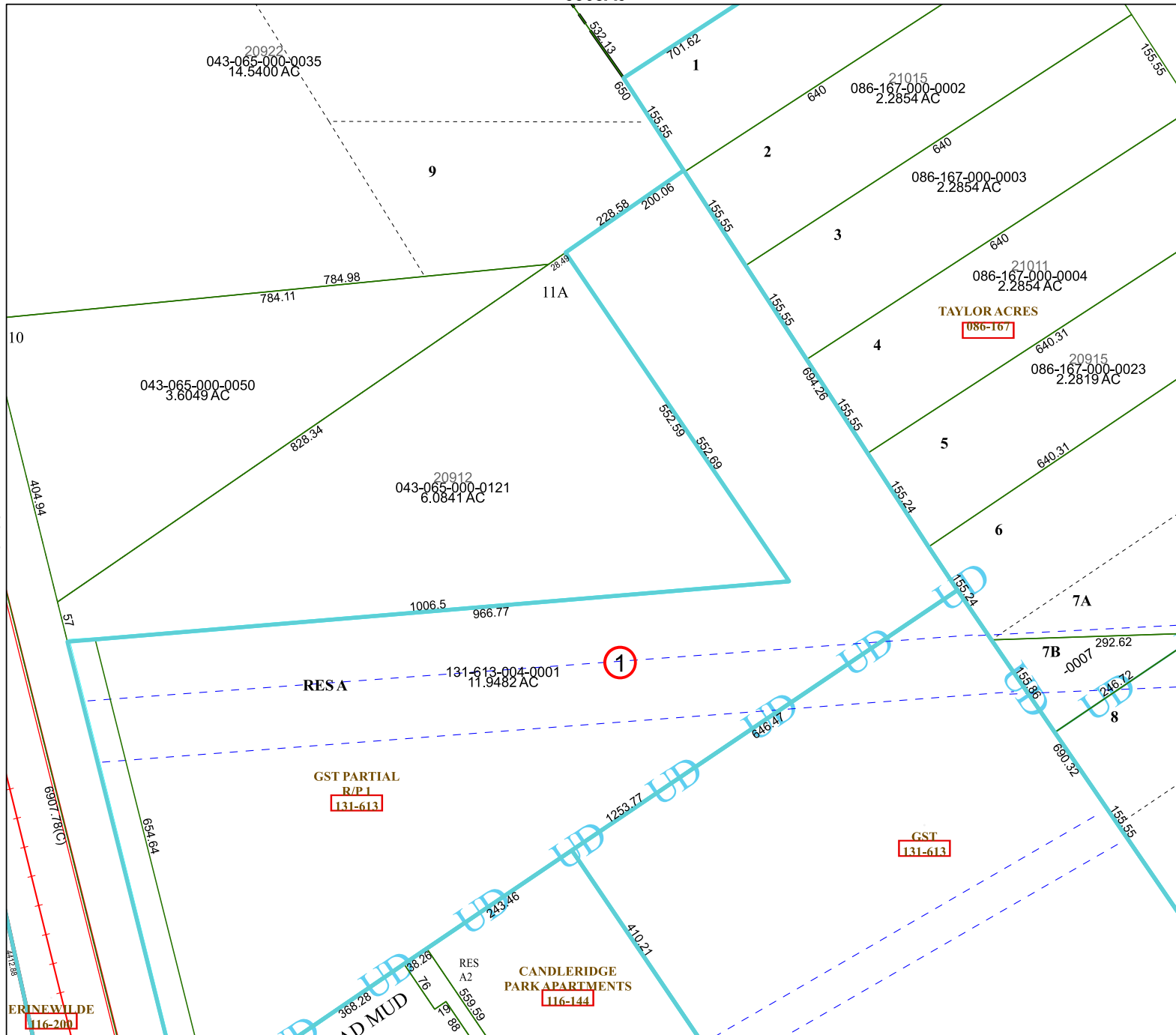
11	12	9	10	11
3	4	1	2	3
7	8	5	6	7

5368A9

5368C5

5268D4

5368C2



ERINEWILDE
116-200

GST PARTIAL
R/P1
131-613

GST
131-613

CANDLERIDGE
PARK APARTMENTS
116-144

RES A2
116-200